



V2 Key Information

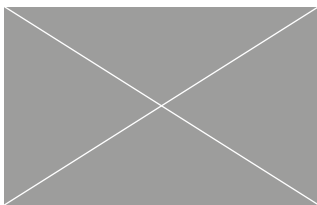


Overall Length	385mm
Hanging Length	360mm
Overall Width	230mm
Cover Width	200mm
Mass (approx.)	2.95kg (Smooth) 3kg (Sandfaced)

Colours
Grey
Brown
Autumn
Red
Sandfaced Brown

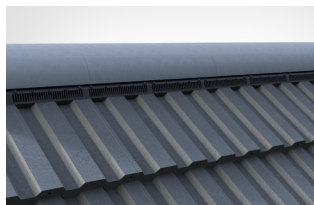
	Pitch	Batten Spacing	Headlap	Tiles Per m ²	Batten Per m ²	Mass Per m ²	Nail Size
V2 Smooth	17.5°-70°	310mm max 285mm min	75mm min 100mm max	16.13m ² 17.54/m ²	3.23lm 3.51lm	47.58kg 51.75kg	50mm x 3.35mm
V2 Sandfaced	22.5°-70°	310mm max 285mm min	75mm min 100mm max	16.13/m ² 17.54/m ²	3.23lm 3.51lm	47.58kg 51.75kg	50mm x 3.35mm

Verge System



Mortar Bedded Only
Verge Clips available

Ridge System



Coverage: 3m Pack
Use With: Half Round or Uni Angle Ridge (NH)
5000mm²/linear metre free vent area
Pitch Limits: 17.5° - 55° (Smooth)
22.5° - 55° (Sandfaced)

Tile Clips



Packs of 100
Made from Plastic
Nails to batten using
50x3.35mm nails (not supplied)

Vent Tiles



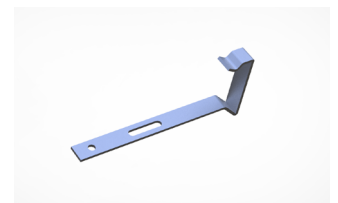
Air Vent - Vent Tile Only
Soil Vent - Vent Tile, 160mm flexi pipe
12275mm² Free Vent Area
Pitch Limits: 17.5° - 55° (Smooth)
22.5° - 55° (Sandfaced)

Hip System



Coverage: 6m Pack
Use With: Third Round or Uni Angle Hips (NH)
Not Ventilated
Pitch Limits: 25° - 55°

Verge Clips



Packs of 50
Nails to batten
Use with mortar bedded verge
Made from Stainless Steel





V2 Product Codes

Tiles & Fittings

Description	Product Code
V2 Smooth Tile	BUZ/7909/V201/--
V2 Sandfaced Tile	BUZ/7911/V2S1/--

Ancillary Products

Description	Product Code
V2 Vented Ridge Pk (3m)	BUZ/7951/V2T5/--
V2 Air Vent Kit	BUZ/7955/V2IV/--
V2 Soil Vent Kit (inc. flexipipe)	BUZ/7955/V2IS/--
Eaves Vent Starter Pk (6m)	BUZ/7955/U5E5/00
Eaves Vent Extension Pk (6m)	BUZ/7955/U5E7/00
Vented Abutment Pk (3m)	BUZ/7951/V2A3/--
V2 Tile Clips (Pk 100)	BUZ/7951/V252/00
V2 Verge Clips (Pk 50)	BUZ/7960/V253/00

Suitable Ridge/Hip Tiles

Description	Product Code
Ridge Half Round (450mm)	BUZ/7935/0516/--
Ridge Half Round Nailhole (450mm)	BUZ/7935/D516/--
Ridge Half Round Block End (450mm)	BUZ/7940/D524/--
Ridge Universal Angle (450mm)	BUZ/7935/U516/--
Ridge Universal Angle Nailhole (450mm)	BUZ/7935/UD16--
Ridge Uni Angle Block End (450mm)	BUZ/7940/U524/--
Ridge Half Round Mono (450mm)	BUZ/7940/0300/--
Ridge HR Mono Block End LH (450mm)	BUZ/7940/0324/--
Ridge HR Mono Block End RH (450mm)	BUZ/7940/0325/--
Ridge Scrolltop Half Round (450mm)	BUZ/7940/HR30/--
Ridge Scrolltop HR Block End (450mm)	BUZ/7940/HR29/--
Ridge Half Round Baby (300mm)	BUZ/7940/0020/--
Ridge Angle Baby (300mm)	BUZ/7940/0019/--
Hip Third Round (450mm)	BUZ/7935/0566/--
Hip Third Round Nailhole (450mm)	BUZ/7935/D566/--
Hip Third Round Block End (450mm)	BUZ/7940/D526/--
Hip Universal Angle (450mm)	BUZ/7935/U566/--
Hip Universal Angle Nailhole (450mm)	BUZ/7935/UD66--
Hip Uni Angle Block End (450mm)	BUZ/7940/U526/--
Gemini Bonnet Hip	BUZ/7950/G513/--
Gemini Bonnet Hip Block End	BUZ/7940/G524/--

Plain Tiles

Description	Product Code
Plain Tile	BUZ/7907/P501/--
Plain Tile & Half	BUZ/7945/P507/--
Plain Tile Eaves & Tops	BUZ/7945/P506/--
Beavertail Tile	BUZ/7930/BT01/--
Beavertail RH Tile & Half	BUZ/7945/BT08/--
Beavertail LH Tile & Half	BUZ/7945/BT07/--
Plain Tile Bonnet Hip	BUZ/7950/PT13/--
90 Deg LH Ext Angle	BUZ/7950/PT11/--
90 Deg RH Ext Angle	BUZ/7950/PT12/--
135 Deg LH Ext Angle	BUZ/7950/PT31/--
135 Deg RH Ext Angle	BUZ/7950/PT32/--

