



AMBI-SOAKER | SLATE DATASHEET

Ambi-Soaker Universal Dry Fix Abutment Soaker for Slates

Use

- Natural or Synthetic slates.
- Abutments between a pitched roof and a wall.
- New build or refurbishment projects.

Features & Benefits

- Pre-formed product shape saves cost and labour time compared to site-fabricated soakers.
- Universal product for both LH or RH installations.
- Product can be trimmed to length as required for smaller slate sizes.
- Sits underneath abutment flashing material. Compatible with stepped or continuous flashings.
- Protects roof abutment areas from rain and weather.
- Long lasting, reliable and virtually maintenance free.
- Lightweight product allows easy handling and installation.
- Simple and clean mortar-free installation process.
- Helps to minimise contamination of water course compared to lead soakers.
- Reduced lead usage within the build helping to deter theft.
- Resistant to UV light and acid rain.

Quality

- Manufactured to BS EN ISO 9001 and BS EN ISO14001.
- Complies with all relevant sections of the Building Regulations.
- Satisfies all relevant NHBC requirements.

Material & Colour

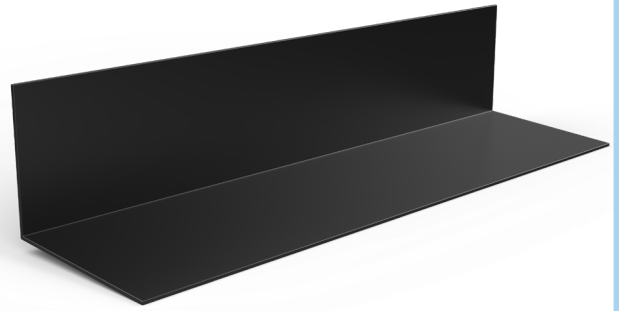
- UV protected and colour-fast polypropylene.
- Available in Black only.

Compatibility

- Natural or Synthetic Slates.
- Slates sizes 600mm x 300mm or 500mm x 250mm.
- Product can be trimmed to suit smaller slate sizes if required.

Product Codes

Description	Colour	Pack Quantity	Lead Time	Product Codes
Ambi-Soaker for Slates	Black	50	Next Working Day	AS-SLATE



How to Order

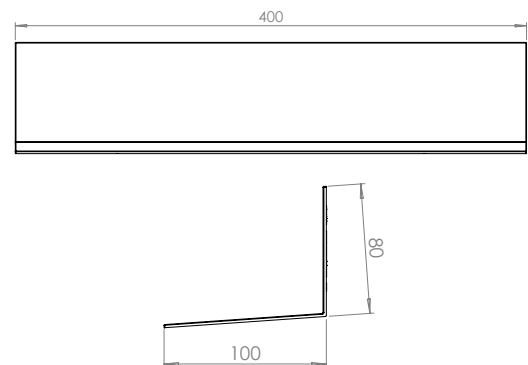
- Ambi-Soakers are fitted one unit per slate for the entire length of the abutment. Check the pack quantity against the number of slates in the run to ensure you have enough Ambi-Soaker units.

Environmental Product Declaration

A quantification of environmental information regarding the life cycle of the Ambi-Soaker - Slate. GWP total is for production stages A1-A3. Verified in accordance with ISO 14025. View the full EPD at timloc.co.uk.

EPD Reference	EPD Mass (KG)	GWP A1-A3 (KG CO ₂ e)
EPD HUB, HUB-2425	0.128	5.61E-02

Product Dimensions



Installation Advice

- Please refer to timloc.co.uk for recommended installation guidance