

The Shed Insulation Kit by SuperFOIL Insulation

Description

This kit contains all the insulation and accessories you need to insulate your garden shed complete with 21m² of SuperFOIL high performance bubble foil insulation. It will keep your shed warm through the winter and cooler during the summer. Quick and easy to install, with no specialist equipment required.

3-in-1 product, SuperFOIL insulation provides you with thermal insulation, a radiant barrier and a vapour control layer. Designed to be lightweight and space-saving while retaining excellent insulating properties.

SuperFOIL insulation delivers protection from cold, heat, UV light and helps prevent penetrating damp and condensation.

Top-up rolls of insulation can be purchased for larger buildings. Suitable for all Shed types and Summerhouses - please see Shed Size Chart for details.

Contents:

- 3 Rolls of 1m x 7m SuperFOIL Multipurpose Insulation
- Heavy Duty Staple Gun
- 1000x 10mm heavy duty staples
- 30m of 50mm SuperFOIL Aluminium Foil Tape.



The Shed Insulation Kit by SuperFOIL Insulation

Directions for Use

Installation on Walls

Working internally - Start at the bottom of the shed, rolling out the insulation around the perimeter, and staple into place onto the inside edge of the frame of the shed to allow for an air gap between the panel and insulation.

Staple approximately every 200mm to hold the product into place.

Once you have installed the first layer of insulation, install the second layer above using the same application methods, remembering to leave a 30-50mm overlap between the rows of insulation.

Finish the installation with the supplied SuperFOIL Tape to seal all overlaps to ensure airtight.

Continue installation in this method until you have reached the top of the walls, leaving an overlap onto the roof of the shed.

Installation on the roof

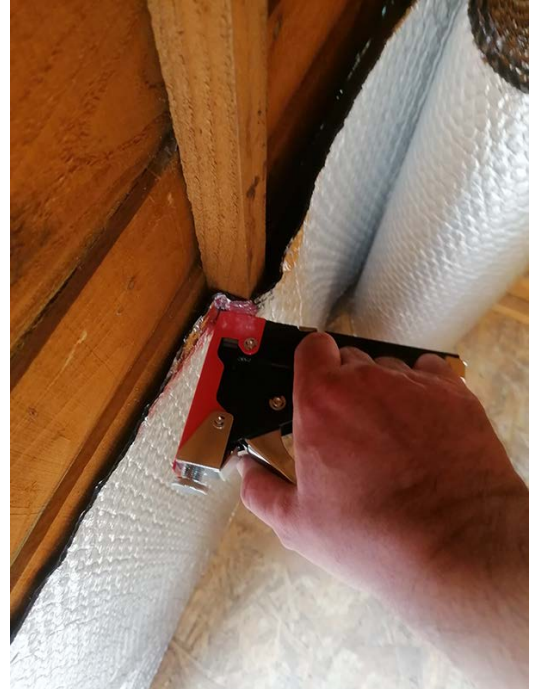
Measure the length of the roof and cut the insulation to the correct length using a pair of sharp scissors.

Staple the insulation into place using the studwork of the shed to allow for an adequate air gap between the insulation and roof.

Continue to install the insulation, ensuring to leave an overlap of 30-50mm between each layer.

Completing the installation

Finish the installation by taping all joints with the supplied SuperFOIL tape to ensure an airtight finish.



The Shed Insulation Kit by SuperFOIL Insulation

Directions for Use cont.

Check if you need more insulation

Before you purchase this product, please ensure that you have enough insulation to cover your shed walls and roof. This pack has enough insulation to comfortably cover the walls and ceiling of shed sizes 6x6ft, 7x6ft or smaller. Check the chart to the right to see if you need additional SuperFOIL MultiPurpose Insulation or SuperFOIL Foil Tape.

Shed Size (ft)	Shed Kits Required	Top-up Insulation Roll 1m x 7m	Top-up Foil Tape
6x4	1	0	0
6x6	1	0	0
7x5	1	0	0
7x6	1	0	0
8x6	1	1	1
8x8	1	1	1
10x7	1	1	1
10x8	1	2	1
12x8	1	2	1

This product is part of the SuperFOIL Family - reflective insulation solutions that use the latest technology to provide the highest performance in a wide variety of applications.

The assortment includes Multi-foil Insulation, Breathable Insulation and Membranes, Bubble Membranes, High Performance Radiant Barriers and Vapour Control Layers, Pipe and Duct insulation, Tapes and Insulation Accessories.

To find out more information about SuperFOIL products please visit www.superfoil.co.uk

Company Information:

Designed and Manufactured by SuperFOIL Ltd
Address: Boulder Business Park,
Pioneer Way, Lincoln.
UK
LN6 0QR

Customer Support and Technical Queries
Technical@superfoil.co.uk
01636 639 900