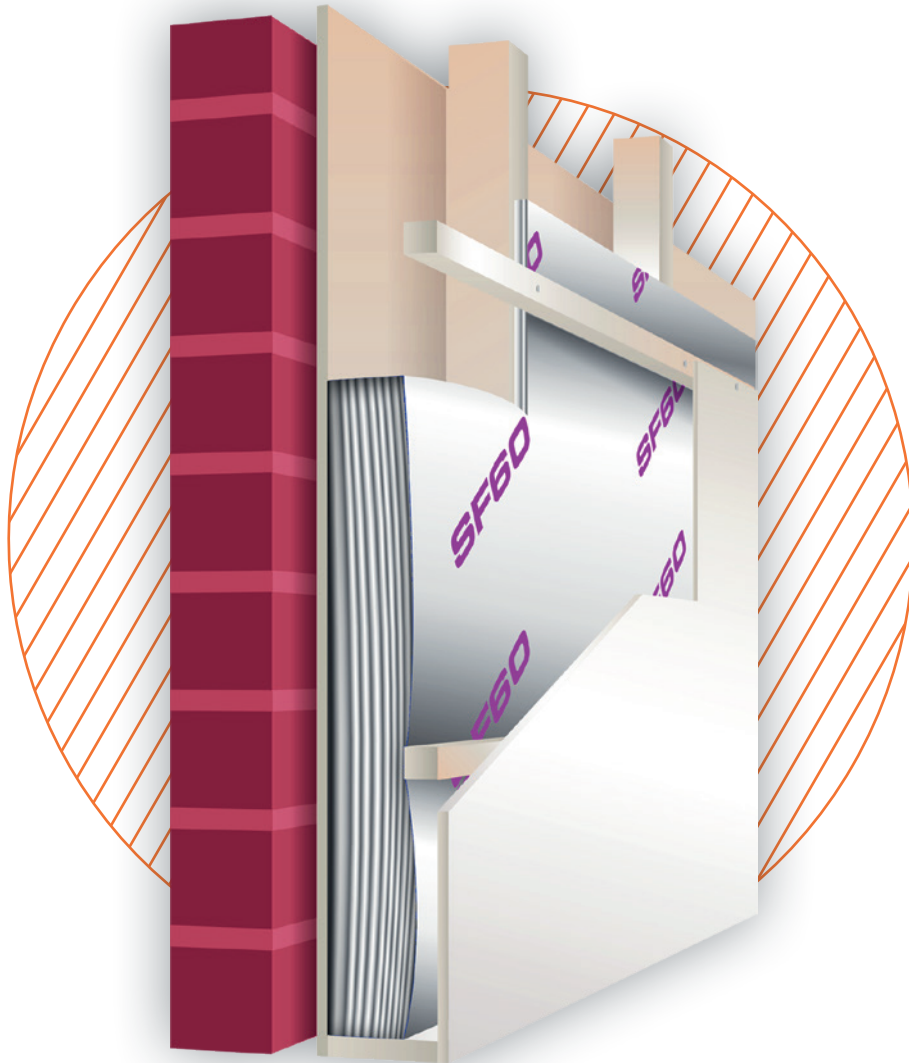


SuperFOIL

Insulation



Installation Guide

Contents

- P/ 3 Ensuring Optimal Results

- P/ 4 Roof Insulation - **SF40**
- P/ 5 Roof Insulation - Over Rafter Application
- P/ 6 Roof Insulation - Under Rafter Application
- P/ 7 Roof Insulation - “Duet” System

- P/ 8 Floor Insulation - **SFUF**
- P/ 9 **SFUF** Basic Install Principles
- P/ 10 Floor Insulation - Suspended Floors
- P/ 11 Floor Insulation - Solid Floors

- P/ 12 Wall Insulation - Internal Installation
- P/ 13 Wall Insulation - External Installation

- P/ 14 Installation Methods
- P/ 15 Contact Us

Ensuring Optimum Results

Insulation, when installed correctly, can not only help to heat buildings more efficiently, but will also use less energy, reducing carbon dioxide emissions and helping to reduce the level of CO₂ in the air.

Proper installation also extends the lifespan of insulation, while protecting the building from moisture damage and other issues.

We've put together this installation guide, to help you install your insulation how the manufacturer intended. If you have any questions, please contact us for more advice on **01636 639 900** or email us at sales@boulderdevelopments.com. And we'll be happy to help.

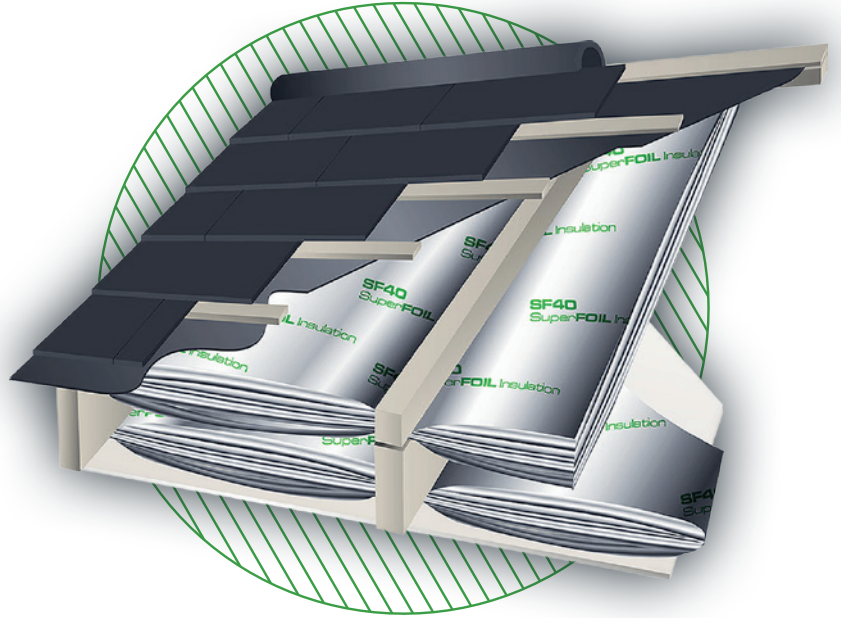


Roof Insulation - SF40

**LOCAL AUTHORITY
BUILDING CONTROL
REGISTERED**

**U-VALUE SOLUTIONS
AS LOW AS 0.1**

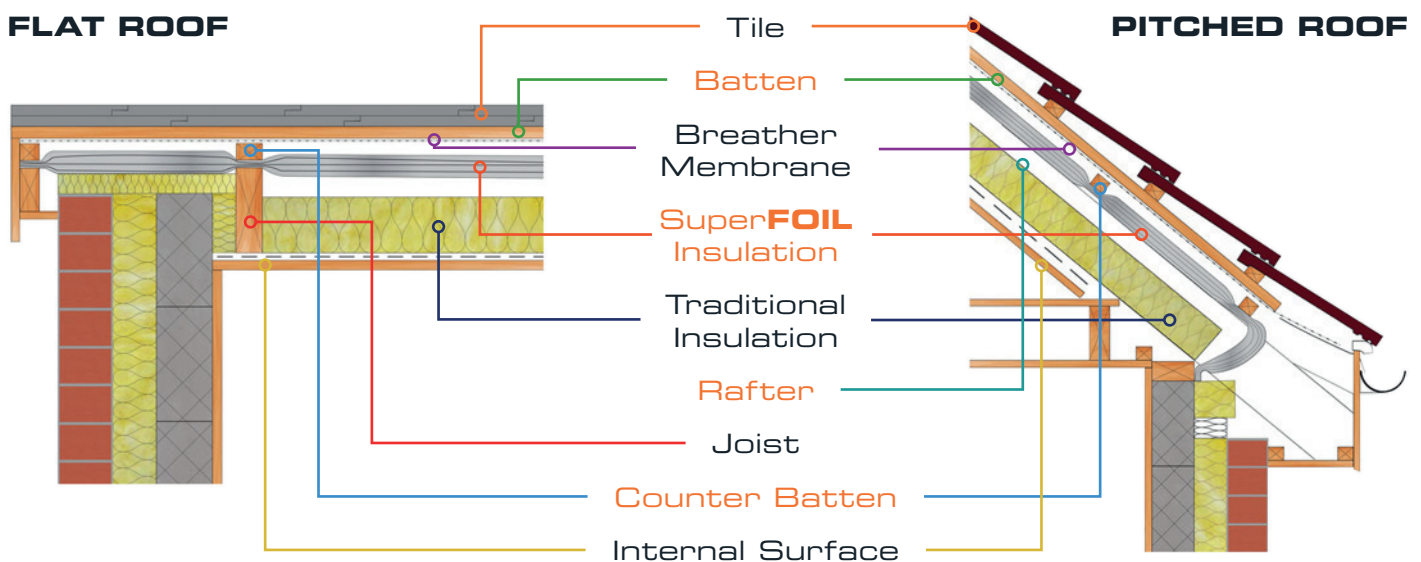
**IDEAL FOR NEW BUILD
OR RETROFIT**



SPECIFICATION	DATA
PITCHED ROOF 'R'-VALUE	3.58
FLAT ROOF 'R'-VALUE	3.58
WALL 'R'-VALUE	4.04
THICKNESS INSTALLED	65mm
WEIGHT PER ROLL	17.5kg
DIMENSIONS PACKED	1.5m x 580mm
ROLL DIMENSIONS	1.5m x 10m
TOTAL AREA PER ROLL	15sqm

DESCRIPTION	LAYERS
REINFORCED HEAVY DUTY DOUBLE FOIL LAMINATED OUTER LAYERS	2
ALUMINIUM COATED REFLECTIVE FOIL PET LAYERS	13
THERMO FOAM SEPARATION LAYERS	16
LOFT QUILT 80g/sqm LAYERS	6
TOTAL LAYERS	37

Over Rafter Application

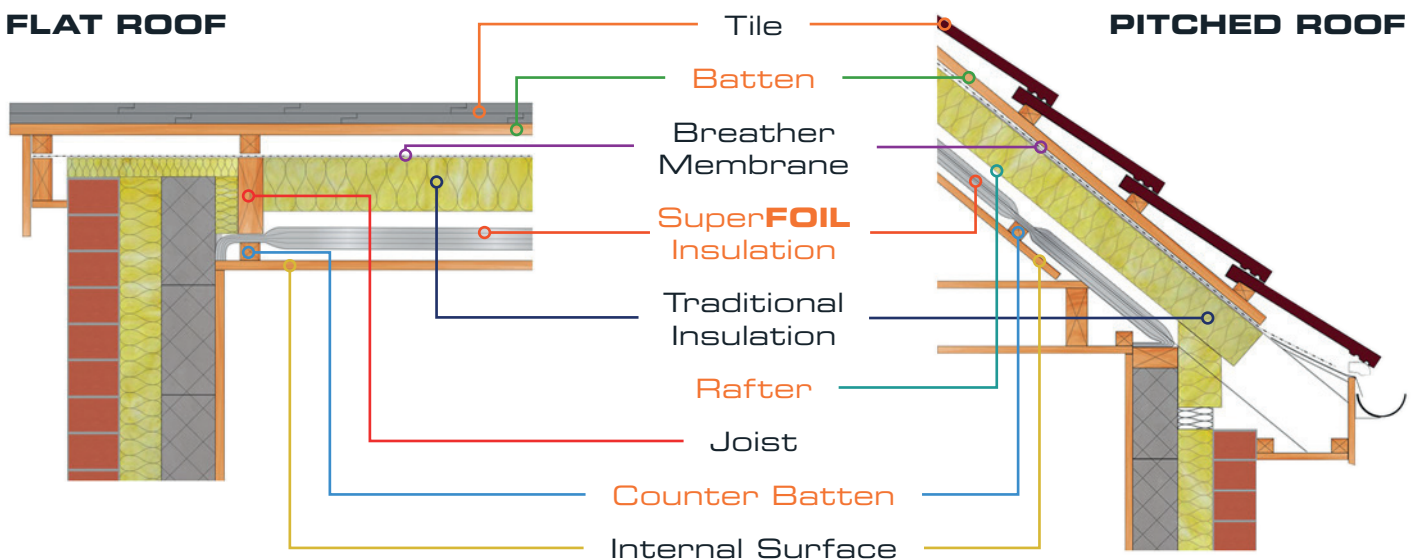


WARM ROOF - Over Rafter Application Using SF40

- 1/ Starting at the eaves, roll out the Super**FOIL** over the rafters, minimise 'slack' and staple every 50mm to 100mm. Overlaps should be at least 75mm and joints should be sealed using Super**FOIL** tape.
- 2/ At the eaves create an airtight envelope by cutting the Super**FOIL** around the rafter and then seal to the cavity insulation or wall plate.
- 3/ Fix counter battens in line with the rafter, over which apply a breathable membrane. e.g. **SFBB** Reflective Breather Membrane.
- 4/ Finally, following manufacturers guidelines, fix tiling lathes and tiles.

NOTE/ This type of installation would require a full roof strip.

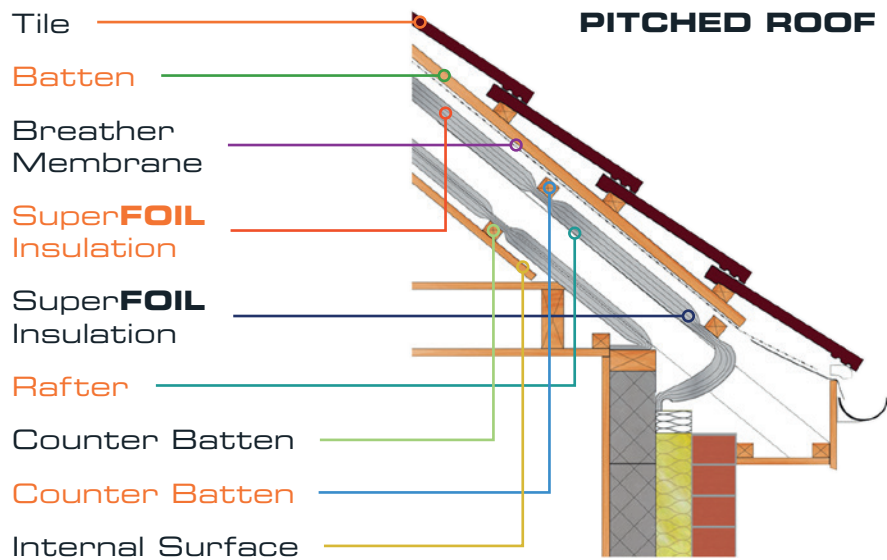
Under Rafter Application



COLD ROOF - Under Rafter Application Using SF40

- 1/** Starting at the ridge level, roll out the Super**FOIL**, Staple every 50mm to 100mm to minimise 'slack'. Overlaps should be approx. 75mm and joints should be sealed using Super**FOIL** tape.
- 2/** At the bottom of the rafters, staple the Super**FOIL** directly to the wall plate to create an airtight envelope.
- 3/** Batten horizontally over the rafters spacing to accommodate the final finish board sizes.
- 4/** Ensure that the air gap between the Super**FOIL** and the final finish board is maintained.

“Duet” System



“DUET” SYSTEM - Using SF40

NOTE/ An alternative to the previous COMBI systems.

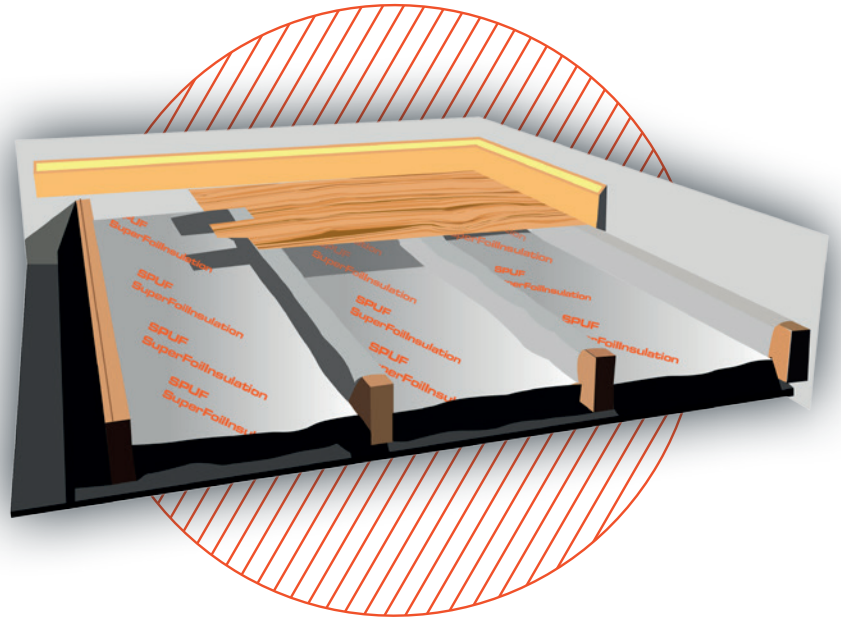
- 1/** Does not require any other type of insulation, so no changing of tools, transporting or storing different materials etc.
- 2/** Simply add an extra layer of **SF40** to the roof to achieve an 'over & under' application.

Floor Insulation - SFUF

**QUICK & EASY
INSTALLATION**

**USE TO INSULATE
NEW OR EXISTING
FLOORS**

**PERFECT FOR USE
UNDER SCREED &
UNDERFLOOR HEATING**



SPECIFICATION

DATA

TENSILE STRENGTH
- LATERAL

550

TENSILE STRENGTH
- LONGITUDE

60

THERMAL BREAK

Yes

ELEMENT CONSTRUCTION
LAYERS

13

TESTED 'R'-VALUE

0.8

ACOUSTIC PERFORMANCE
IMPACT NOISE DELTA L

up to 22db

THICKNESS

6mm

COLOUR

Silver

SPECIFICATION (large roll)

DATA

WIDTH

1.5m

LENGTH

12.5m

WEIGHT

9kg

SPECIFICATION (small roll)

DATA

WIDTH

1.5m

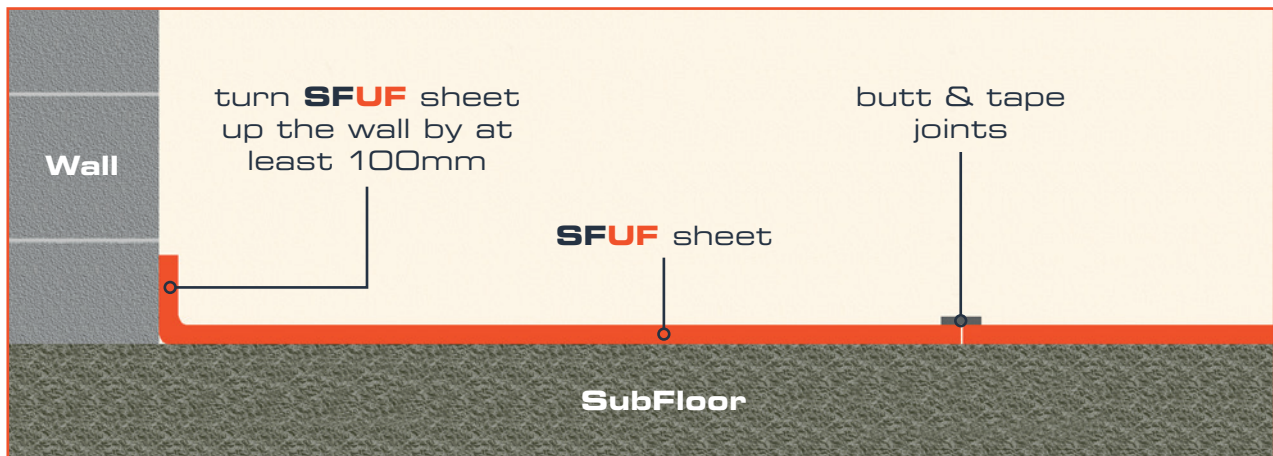
LENGTH

8m

WEIGHT

6.15kg

SFUF Basic Install Principles

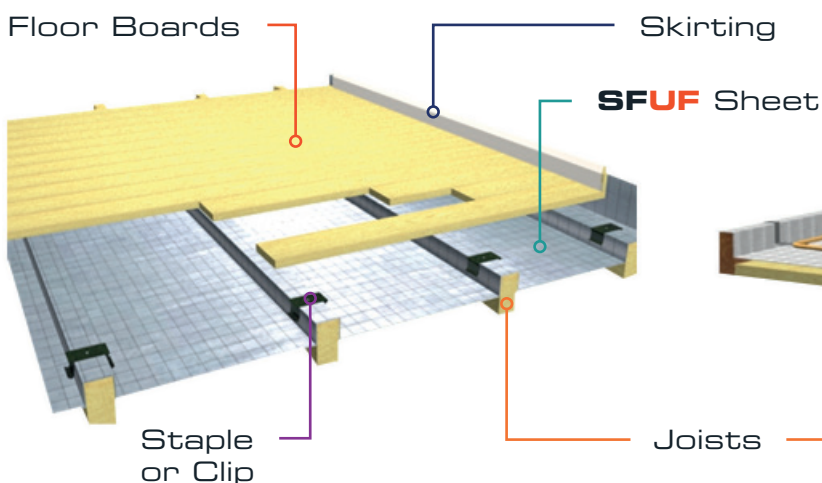


BASIC INSTALLATION PRINCIPLES - Using SFUF Thermal Insulation

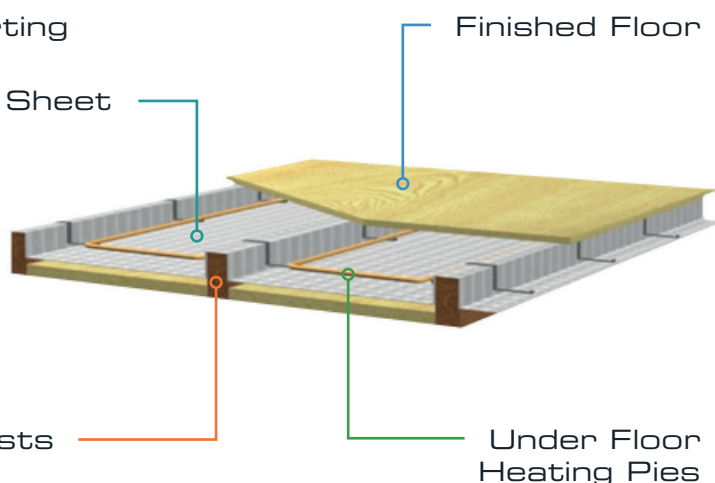
- 1/** When turned up the wall by a minimum of 100mm, **SFUF** provides a thermal break and will reduce or eliminate cold bridging.
- 2/** Butt joint meeting edges of **SFUF** to eliminate awkward extra thickness.
- 3/** Seal joint with Super**FOIL** jointing tape to prevent unwanted circulation and maintain the VCL.

Suspended Floors

SUSPENDED FLOOR



UNDERFLOOR HEATING



OVER JOISTS APPLICATION

- Using SFUF

- 1/ Start at the wall edge with a minimum 100mm upstand.
- 2/ Butt joint meeting edges and seal with SuperFOIL tape to prevent unwanted circulation.
- 3/ Staple the SFUF onto the joists.
- 4/ Finish the floor deck as per the manufacturer's instructions.

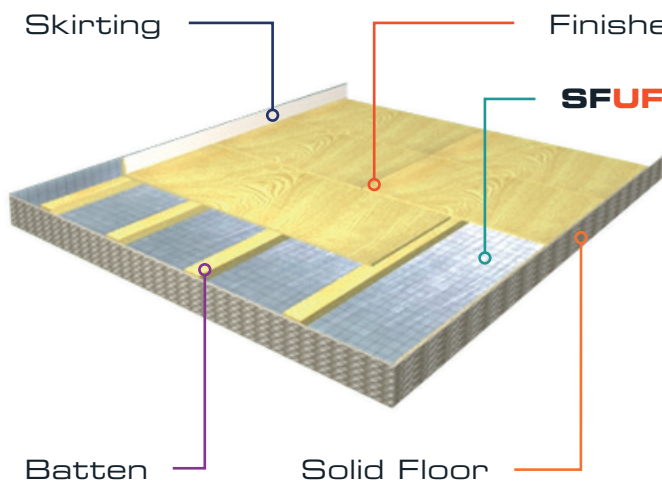
OVER JOISTS APPLICATION

- With Wet Underfloor Heating Using SFUF

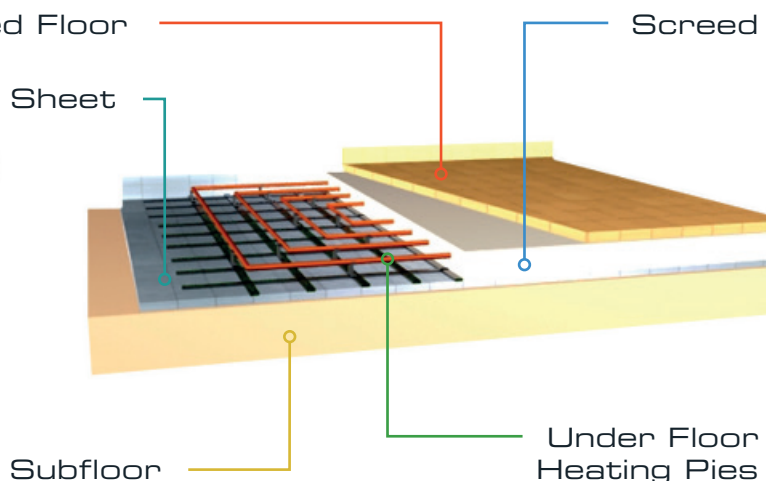
- 1/ Start with rigid insulation board, glass wool or SF40 fitted snugly between joists.
- 2/ Next, fit the SFUF as per the instructions to the left.
- 3/ Install pipe work and finished floor deck as per the manufacturer's instructions.

Solid Floors

SOLID FLOOR



UNDERFLOOR HEATING



SOLID FLOOR APPLICATION - Using SFUF

- 1/ Ensure the sub-surface is clean dry and smooth.
- 2/ Install **SFUF** as previously instructed: butted and taped joints. With 100mm upstand at the walls.
- 3/ Batten out to accommodate the fixings for the finished floor.

SOLID FLOOR APPLICATION - With Wet Underfloor Heating Using SFUF

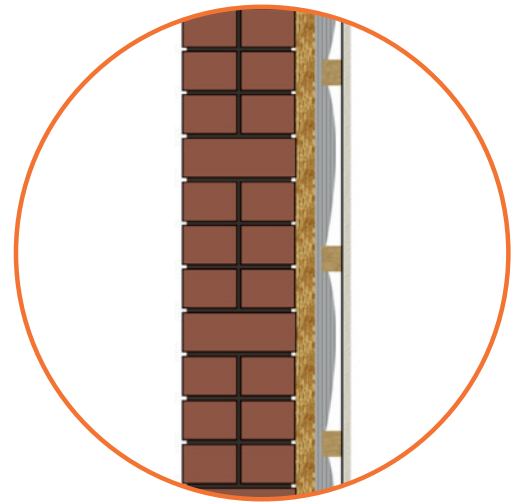
- 1/ Ensure the sub-surface is clean dry and smooth.
- 2/ Install **SFUF** as previously instructed: butted and taped joints. With 100mm upstand at the walls.
- 3/ Install the underfloor heating pipe-work and then screed following the manufacturer's instructions.

Walls – Internal Installation

INTERNAL WALL

- New & Old Using SF40 / SF60

- 1/ Apply battens to the wall either vertically or horizontally. The batten size required is dependent on the product being used.
- 2/ Apply Super**FOIL** directly to the battens from the roll either horizontally or vertically.
- 3.1/ When installing horizontally, start at the bottom of the room and work up to the ceiling, overlapping at each junction.
- 3.2/ When installing vertically, start at the high point and roll down to the floor.
- 4/ Apply tension to the Super**FOIL** as you staple in place; staple into the battens with staples inserted at regular intervals, 50mm to 100mm spacing is recommended. Cut to length and fix the next layer.
- 5/ Overlap all joints by a minimum of 50mm and staple onto the battens where the joint crosses the batten.
- 6/ At the floor & ceiling ensure extra length is allowed to ensure a good seal is created. Then fix with a batten.
- 7/ To fix plasterboard install counter battens sized according to the product used.
- 8/ Always apply battens around window reveals.
- 9/ Seal all joints, cuts & intrusions (such as pipes, ducting etc) using Super**FOIL** tape before fixing plasterboard to the battens.
- 10/ It is best practice to use a vapour control layer such as **SFTV**, directly behind plasterboard to minimise the risk of condensation.

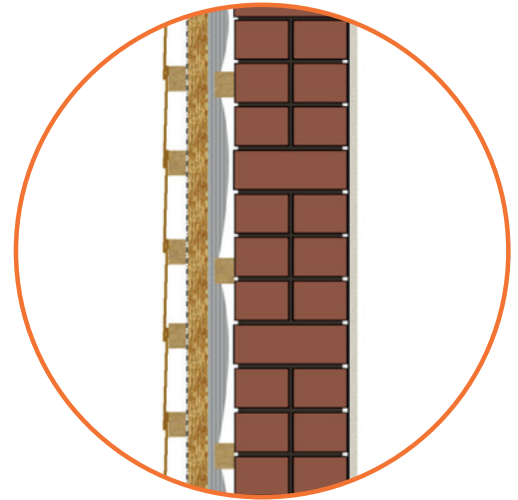


Walls – External Installation

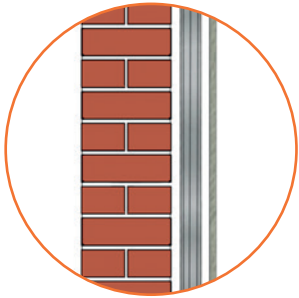
EXTERNAL WALL

- New & Old Using **SF40** / **SF60**

- 1/ Apply battens to the wall either vertically or horizontally. The batten size required is dependent on the product being used.
- 2/ Apply Super**FOIL** directly to the battens from the roll either horizontally or vertically.
- 3.1/ When installing horizontally, start at the bottom of the wall and work up to the top, overlapping at each junction.
- 3.2/ When installing vertically, start at the high point and roll down to the floor.
- 4/ Apply tension to the Super**FOIL** as you staple in place; staple into the battens with staples inserted at regular intervals, 50mm to 100mm spacing is recommended. Cut to length and fix the next layer.
- 5/ Overlap all joints by a minimum of 50mm and staple onto the battens where the joint crosses the batten.
- 6/ At the top & bottom ensure extra length is allowed to ensure a good seal is created. Then fix with a batten.
- 7/ Install counter battens sized according to the product used.
- 8/ Always apply battens around window reveals.
- 9/ Seal all joints, cuts & intrusions (such as pipes, ducting etc) using Super**FOIL** tape before fixing your external surface to the battens.
- 10/ It is best practice to use a breathable membrane layer such as **SFBB**, directly behind the external surface, to act as a secondary rain barrier and reduce the risk of condensation.
- 11/ If installing **SF19BB**, a separate breathable membrane is not required as **SF19BB** provides both an insulation layer and breathable membrane in one.



Installation Methods



SOLO INSTALLATION

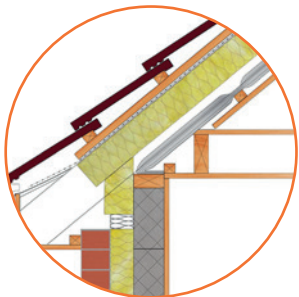
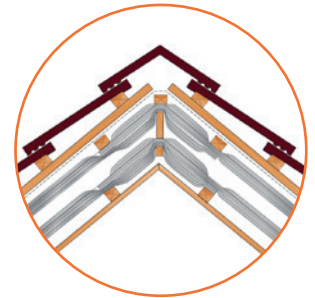
Using Super**FOIL** as a stand alone insulation to improve thermal performance of a building.

For example - **SF60** on a wall achieves a 0.18U which meets the requirements of building regs for a new build wall.

DUET INSTALLATION

Using Multiple layers of Super**FOIL** together to achieve even higher or specific U-Value requirements.

For example - Two layers of **SF40** in a roof achieves a 0.13U which meets the requirements of building regulations for a new build roof.



COMBI INSTALLATIONS

Super**FOIL** can also be used in conjunction with any other form of insulation to meet specific U-value requirements.

For example - **SF40** combined with 50mm of HD foam board between rafters achieves a 0.18U value which is the requirement of building regulations for a retrofit roof installation.

Contact Us

If you require any advice, assistance or information about our Super**FOIL** products, then please contact us on **01636 639 900** or email us at sales@boulderdevelopments.com. And we'll be happy to help.

For information on which kind of insulation is right for you, please see our other guides or contact us using the information on this page.

-
- A/** Super**FOIL** Insulation
Black Horse Farm, Main Street,
Norwell, Newark NG23 6JN
- T/** 01636 639 900
- E/** sales@superfoil.co.uk
- W/** www.superfoil.co.uk
-

