

# RW Slabs

(RWA45, RW3, RW4, RW5 & RW6)

Acoustic insulation slabs for a wide range of building applications.

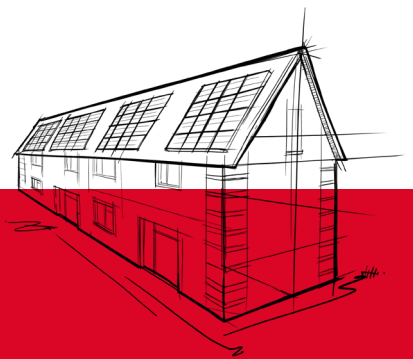
ROCKWOOL RW Slabs can be applied to an array of general building applications to provide thermal, acoustic, and fire protection for walls, ceilings, floors, and roofs.

Available in a range of thicknesses and densities from 45 to 140kg/m<sup>3</sup>, the slabs can also be black or white tissue-faced, or foil-faced, on one or both sides (subject to production compatibility).

- Suitable for various general building applications.
- Non-combustible – Euroclass A1 classification as defined in EN 13501-1.
- Available in a range of thicknesses and densities.
- Black or white tissue, and aluminium foil facings available on request\*.

\* Subject to production compatibility and minimum order quantity.

\*\* Further information on the acoustic performance of RW Slabs can be found in the SRL Technical Report 82289-SRL-RP-XT-001-P1.



**ROCKWOOL RW semi-rigid and rigid slabs are acoustic stone wool slabs that can be used in general building applications.**

ROCKWOOL stone wool insulation is sound absorbing by nature, and can be used to reduce the noise transmission into a building and between the indoor spaces\*\*.

# RW Slabs



Figure 1 – RWA45

## APPLICATIONS

RW Slabs can be used for a wide range of applications for partitions and ceilings, as well as thermal insulation for floors, walls, and roofs.

# RW Slabs

## PERFORMANCE

### Acoustic performance

The non-directional fibre orientation and density of ROCKWOOL stone wool help absorb sound waves and dampen vibrations, contributing to a reduction in the transmission of external noise when used in external wall applications.

Product	Nominal density (kg/m <sup>3</sup> )	Thickness (mm)	a <sub>vw</sub>
RWA45	45	25	0.55 (H)
RWA45	45	100	1.00
RW3	60	25	0.55 (H)
RW3	60	100	1.00
RW4	80	100	1.00
RW5	100	25	0.60 (MH)
RW5	100	100	1.00
RW6	140	100	1.00

Shape indicators, L, M, and H (low, medium, high), show the frequencies at which the practical sound absorption coefficient exceeds the shifted reference curve by 0.25 or more. For more information, see SRL Report No. 82289-SRL-RP-XT-001-P1.

### Thermal performance

RW Slabs achieve a thermal conductivity lambda ( $\lambda$ ) value as low as 0.034 W/mK.

Stone wool is highly durable and long-lasting. Tests of ROCKWOOL stone wool recovered from old buildings have shown that our stone wool retains its performance characteristics – thermal, mechanical, fire resistance – for at least 50 years, and probably longer. A test of a 65-year-old stone wool sample found in 2023 during a renovation of Copenhagen airport showed that these characteristics had not diminished after 65 years\*\*.

Product	Thermal conductivity	Dimensions (mm)*
RWA45	0.035 W/mK	1200 x 600
RW3	0.034 W/mK	1200 x 600
RW4	0.034 W/mK	1200 x 600
RW5	0.034 W/mK	1200 x 600
RW6	0.035 W/mK	1200 x 600

\* Faced slabs come in 1000mm x 600mm dimensions.

\*\* Testing done at Danish Technical Institute (DTI) in 2023, "Testing ROCKWOOL insulation from CPH airport hangar 4".

### Fire performance

RW Slabs are able to resist temperatures of over 1,000°C, and achieve the highest Euroclass A1 non-combustibility classification as defined in EN 13501-1.

### Facings

RW Slabs are available with a number of facing options to one or both sides of the slab, subject to production compatibility and minimum order quantities.

These options are:

- Non-woven mineral black tissue (60gsm).
- Non-woven mineral white tissue (100gsm).
- Aluminium foil.

## INSTALLATION

### Internal partitions

#### Dwellings

In England and Wales, Approved Document E requires all internal walls between a bedroom or room containing a WC and another room to have a minimum sound insulation of 40 Rw dB. This applies to new walls built both in dwellings formed by a material change of use and new build extensions of existing dwellings (for Scotland, the minimum sound insulation requirement is 43 Rw dB).

#### Schools

Specific performance standards are set for airborne sound insulation between spaces by Building Bulletin 93 (December 2014): 'The Acoustic Design of Schools'. This classifies each room for the purpose of airborne sound insulation by its activity purpose and sets the minimum sound insulation performance standards for each partition.

#### Hospitals

Similar to schools, the Health Technical Memorandum HTM 08-01 (previously HTM 2045) sets standards for privacy according to room type. From this, the specific performance requirement for any partition can be obtained.

#### Fire performance requirements for internal partitions

Generally, fire performance of partitions will be determined in line with the appropriate Building Regulations. In certain buildings, there may be specific fire performance requirements for partitions separating specific room types – for example, in hospitals, where this is set by Firecode HTM 05-02, and in schools, where this is set by Building Bulletin 100: 'Design for Fire Safety in Schools'.

## PRODUCT INFORMATION

Product	Width (mm)	Length (mm)	Thickness (mm)
RWA45	600	1200	25 - 230
RW3	600	1200	25 - 200
RW4	600	1200	25 - 250
RW5	600	1200	25 - 200
RW6	600	1200	30 - 120

\*Faced options are available upon request and subject to production compatibility. Thickness options may be subject to a minimum production volume. Speak to the Specification Team for guidance.

## ADDITIONAL INFORMATION

### Durability

Tests of our stone wool recovered from old buildings have shown that it retains its performance characteristics – thermal, mechanical, fire resistance – for at least 50 years, and probably longer. A test of a 65-year-old stone wool sample found in 2023 during a renovation of Copenhagen airport showed that these characteristics had not diminished after 65 years.\*

*\*Testing done at Danish Technical Institute (DTI) in 2023, "Testing ROCKWOOL insulation from CPH airport hangar 4"*

### Condensation

ROCKWOOL stone wool insulation is vapour permeable, reducing the risk of condensation, which can lead to rot, mould, and humidity damage.

## STANDARDS AND APPROVALS

### Certificate

RW Slabs satisfy the requirements of BS EN 13162 – "Thermal insulation products for buildings. Factory made mineral wool (MW) products."

Manufactured under ISO 14001 Environmental Management Systems, and ISO 9001 Quality Management Systems.

## INSTALLATION

The product must be installed in accordance with the current ROCKWOOL guidelines. For further information, please visit [rockwool.com/uk](http://rockwool.com/uk) or contact our Technical Solutions Team on 01656 868490.

### LEGAL NOTICES

#### General safety requirements – Building Safety Act 2022

ROCKWOOL Limited is committed to supporting specifiers, resellers, and users of ROCKWOOL products for the full life cycle of the product to comply with the obligations and responsibilities set out in the Building Safety Act 2022. With regard to the general safety requirements of the Act, ROCKWOOL Limited cannot control or foresee every situation where its products might be used. We therefore strongly advise that specifiers, resellers, and users contact us where use of ROCKWOOL products is contemplated in applications different from those explicitly described in the latest, relevant ROCKWOOL product datasheets; especially in applications that can be reasonably foreseen as critical to safety.

ROCKWOOL Limited reserves the right to amend the specification of its products without notice. Changes to the ROCKWOOL manufacturing process, or to pertinent regulations, may be reflected in changes to tested and certified product performance. Whilst ROCKWOOL Limited endeavours to keep its publications up to date, readers will appreciate that between publications there may be pertinent changes in the law or other developments affecting the accuracy of the information contained in our publications.

ROCKWOOL Limited does not accept responsibility for the consequences of using (including testing or certifying) its products in applications different from those explicitly described in the relevant ROCKWOOL product datasheets. Expert advice should be sought, and ROCKWOOL Limited should be contacted, where such different use is contemplated, or where the extent of any use described by ROCKWOOL Limited is in doubt.

#### The ROCKWOOL Trademark

ROCKWOOL® – our trademark

The ROCKWOOL trademark was initially registered in Denmark as a logo mark back in 1936. In 1937, it was accompanied with a word mark registration; a registration which is now extended to more than 60 countries around the world.

The ROCKWOOL trademark is one of the most important assets of the ROCKWOOL Group, and is therefore well-protected and defended by ROCKWOOL throughout the world.

If you require permission to use the ROCKWOOL logo for your business, advertising or promotion, you must apply for a Trade Mark Usage Agreement.

To apply, write to:  
[marketcom@rockwool.com](mailto:marketcom@rockwool.com)

#### Trademarks

Registered trademarks of the ROCKWOOL Group include but are not limited to:

ROCKWOOL®, RockClose®, RainScreen Duo Slab®, HardRock®, RockFloor®, Flexi®, RockFall®, FirePro®, DuctRock®, BeamClad®, NyRock®

© ROCKWOOL 2026.  
All rights reserved.

#### Photography and illustrations

The product illustrations are the property of ROCKWOOL Limited and have been created for indicative purposes only.

Unless indicated below, the photography and illustrations used in this guide are the property of ROCKWOOL Limited. We reserve all rights to the usage of these images.

If you require permission to use ROCKWOOL images, you must apply for a Usage Agreement.

To apply, write to:  
[marketcom@rockwool.com](mailto:marketcom@rockwool.com)

### HEALTH & SAFETY

A Material Safety Data Sheet is available and can be downloaded from [rockwool.com/uk](https://rockwool.com/uk) to assist in the preparation of risk assessments, as required by the Control of Substances Hazardous to Health Regulations (COSHH).

# RW Slabs

Company:	ROCKWOOL Limited
Version:	Version 1.03 February 2026 (to check this is the latest version, please refer to <a href="https://rockwool.com/uk">rockwool.com/uk</a> )
Revised on:	03.02.2026
Product name:	RW Slabs
Replaces version:	Version 1.02 October 2025
Changes made:	<ul style="list-style-type: none"><li>• Updated acoustic performance information</li></ul>
Additional information:	

*Please ensure you are using the latest version of this document by verifying it on our official website. Do not rely on printed or previously downloaded copies, as these may be out of date.*

*Please contact the ROCKWOOL Technical Support Team if you would like to access archived versions of this document.*

## ROCKWOOL stone wool – safe to install and live alongside

There are no hazardous classifications associated with stone wool insulation manufactured by ROCKWOOL UK according to EU REACH and UK REACH regulations on health and the environment.

ROCKWOOL safe use instruction sheets and material safety data sheets (where applicable) can be downloaded [here](#).



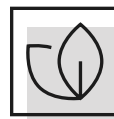
### Sustainability

ROCKWOOL products are used to help enrich modern living, supporting more resilient and comfortable buildings.

We transform abundant, natural volcanic rock into stone wool insulation products that help our customers tackle energy consumption, noise pollution, fire resilience, and climate change challenges such as water scarcity and flooding.

Since our stone wool is endlessly recyclable with no loss in its performance properties, we can take back clean, uncontaminated new off-cuts, and unused ROCKWOOL stone wool insulation from construction sites in the UK. Our service, Rockcycle®, takes back our stone wool and recycles it back into production where it is used to make new ROCKWOOL products.

Our annual sustainability reports, which set out progress against our sustainability goals and further details of the positive impacts of using our products, can be found on our website.



### Environment

ROCKWOOL takes a fact-based, auditable approach to documenting our progress in maximising our products' positive impact and minimising the effect our operations have on the environment, backed by third-party references and methodologies. Further details can be found online in our annual sustainability report.

Our high-tech production process uses filters, pre-heaters, after-burners, and other cleaning and collection systems that help to reduce the effects of our manufacturing operations on the environment.

ROCKWOOL stone wool insulation does not contain (and has never contained) gases that have ozone depletion potential (ODP) or global warming potential (GWP).

