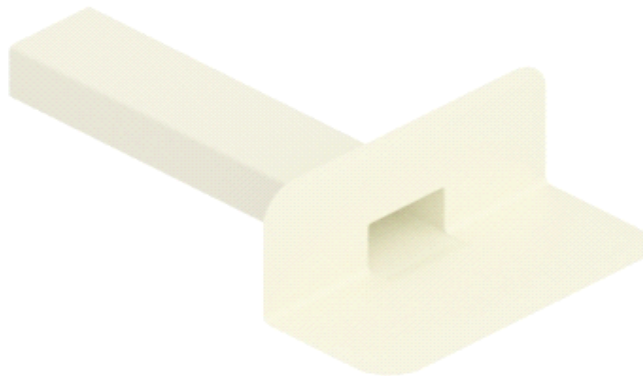




Data sheet

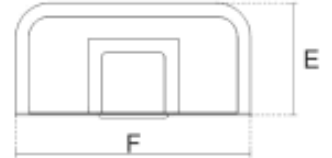
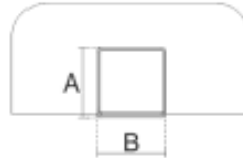
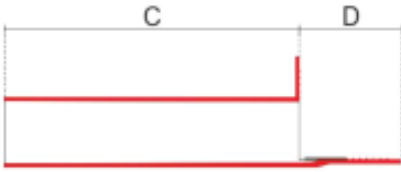
PVC Corner Outlet (Smooth Flange)



Function:	Through wall / corner fittings are designed to be welded to synthetic PVC roofing membranes around rainwater roof drains up to a wall / parapet. They have a square or rectangular mouth. The flange is soft and floppy and easy to manipulate. It is slightly inclined back from the face towards the shank to help create a secure seal. The flange is smooth throughout the bond and welding should only be carried out with a hot air gun, not a naked flame. They are available with either a 65x100 mm rectangular mouth or with a 100x100 mm square mouth. Always prime the outlet and membrane before installation.		
Compatibility:	They are compatible with single ply / PVC sheet membranes.		
Range:	Section (A x B) 65x100 100x100		
Performance:	Resistant to deterioration by the sun, ozone and other agents or chemicals normally found in the atmosphere. They have excellent flexibility even at low temperatures. The mechanical properties are maintained in the long term.		
Operating temperature:	-20°C; +70°C	Included accessories:	N/A
Material:	PVC	Optional accessories:	Tapered joint, Gravel excluders
Recycled product:	No	Recyclable:	Yes

Data Sheet

PVC Corner Outlet (Smooth Flange)



Item	Description	A	B	C	D	E	F
RO-PVC-120-300-065-100-Z	PVC Corner Outlet H65m W100mm	65	100	427	150	155	340
RO-PVC-120-300-100-100-Z	PVC Corner Outlet H100m W100mm	100	100	427	150	155	340
RO-PVC-120-310-100-100-Z	PVC Corner Outlet H100m W100mm	65	100	427	150	155	280
RO-PVC-120-300-065-100-Z	PVC Corner Outlet H65m W100mm	100	100	427	150	155	280

Additional Information:

For more information on interface with connectors etc. please refer to the corresponding Accessories datasheets.



If not otherwise indicated, all measurements are expressed in millimetres.