

GO TO OUR WEBSITE



RESTEC
roofing systems

RESTEC

GRP ROOF
High performance waterproofing

10m² Roof Kit

RESTEC

roofing systems

TALYST

5kg

GRP ROOF

High performance fibreglass system

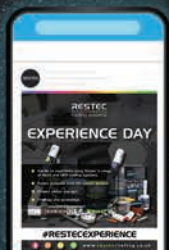
The ultimate flat roof protection.

Specially formulated to provide lasting waterproofing protection, the **GRP Roof 1010 System** offers unrivalled performance at exceptional value.

The highly impact-resistant finish can withstand regular foot traffic without additional protection and when combined with an anti-slip finish, the **GRP 1010 System** is the perfect choice for balconies and walkways.

Why choose **GRP ROOF**?

- ✓ 20 Year Guarantee on materials.
- ✓ Engineered for optimum roofing performance.
- ✓ Flexible technology for reduced risk of cracking.
- ✓ BROOF (t4) Fire Rating for unrestricted use.
- ✓ Excellent inter-coat adhesion, no flaking or de-lamination.
- ✓ LABC Registered Detail for assured compliance with building regulations.



**CHECK OUT OUR
SOCIAL MEDIA!**



Follow us online @restecroofing



Call: 0845 4504 193

restecroofing.co.uk

RESTEC

GRP¹⁰¹⁰ROOF Components

GRP¹⁰¹⁰ROOF BASE RESIN



Pack Size	Coverage	Code
20kg	16m ²	160102
10kg	8m ²	160101

GRP¹⁰¹⁰ROOF TOP COAT



Pack Size	Coverage	Code
20kg	30m ²	160104
10kg	15m ²	160103

RESTEC 450g/m² CSM



Pack Size	Coverage	Code
Bulk Pack	77m ²	104306
30m ² Roll	28.8m ²	104303
15m ² Roll	14.42m ²	104302

RESTEC 600g/m² CSM



Pack Size	Coverage	Code
Bulk Pack	58m ²	104313
30m ² Roll	28.8m ²	104312
15m ² Roll	14.42m ²	104311

LIQUID CATALYST



Pack Size	Code
5kg	102006
1kg	102005

GRP¹⁰¹⁰ROOF 10m² ROOF KIT



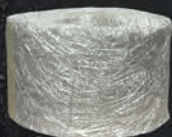
Pack	Contains	Code
10m ² Kit	Materials for waterproofing a roof up to 10m ²	101160

RESTEC TOOLING KIT



Pack	Contains	Code
Kit	Application rollers, paddle rollers, brushes and more	109163

TAPING MAT



Pack Size	Code
Small 18 LM	104005
Large 110 LM	104004

ACETONE



Pack Size	Code
5 litre	109106
1 litre	109026

CATALYST DISPENSER



Pack Size	Code
80ml	109102

15KG SLATE CHIPPINGS



Colour	Code
Blue mineral	109049
Green mineral	109046

Extra Additions:

GRP ¹⁰¹⁰ ROOF	BASE COAT WINTER ACCELERATOR
GRP ¹⁰¹⁰ ROOF	TOP COAT WINTER ACCELERATOR
GRP ¹⁰¹⁰ ROOF	FINISHING TISSUE

Pack Size	Code
1 Pack per 10kg of Base Resin	160111
1 Pack per 10kg of Top Coat	160112
100 lm	107046

Check out our full range:



PREMIUM GRP ROOF TRIMS (3m Trims Supplied as a Pack of 10)

TRIM		LENGTH	CODE
DRIP	65mm (A170)	3m	157112
DRIP	85mm (A200)	3m	157113
UPSTAND FASCIA	100mm (B230)	3m	157114
UPSTAND FASCIA	120mm (B260)	3m	157115
WALL FILLET (D260)		3m	157116
LONG LEG WALL FILLET (D300)		3m	157123
COVER FLASHING (C100)		3m	157105
EXPANSION (E280)		3m	157117
FLAT SHEET -	300mm (F300)	3m	157122
FLAT SHEET -	300mm Roll (F300)	20m	157107
FLAT SHEET -	600mm Roll (F600)	20m	157108
SHORT INTERNAL ANGLE	(AT170INT)	3m	157118
LONG INTERNAL ANGLE	(AT220INT)	3m	157120
SHORT EXTERNAL ANGLE	(AT150EXT)	3m	157119
LONG EXTERNAL ANGLE	(AT275EXT)	3m	157121
LEAD ROLL (ER35/40)		3m	157130
STANDING SEAM (ER15)		3m	157131

CORNER TRIMS

CORNER		CODE
CORNER (C1)	Universal External corner - Individual	157109
EXTERNAL (C3)	For use with Wall Fillet D260 Trim - Individual	157132
INTERNAL (C3)	For use with Wall Fillet D260 Trim) - Individual	157133

PRE-FORMED ACCESSORIES

OUTLET	SIZE	LENGTH	CODE
THROUGH WALL OUTLET	150mm x 150mm	600mm	155067
	100mm x 100mm	600mm	155068
PIPE COLLAR	110mm		155069
FLAT ROOF OUTLET	110mm		155070



RESTEC
roofing systems

1010 GRPROOF Applications



1010 GRPROOF TRADITIONAL FIBREGLOSS THE RESTEC WAY!

Lasting waterproofing protection designed for new deck applications or full refurbishments where new decking is required.



ROOF OVER 50M²?

Or longer than 10 linear meters require an E280 expansion trim. Contact Restec technical services for assistance.

1010 GRPROOF A STUNNING FINISH FOR EVERY APPLICATION.

- Warm Roofs
- Cold Deck Roofs
- Balconies
- Green Roofs
- Simulated Metal Finishes
- Dormers
- Bay Windows
- Orangeries & Extension
- Conservatory Conversions



Check out our full range:

