

Modern and precisely engineered, ray.lux is the ideal affordable solution for any project.

## Technical Data

### Glazing:

- Double-glazed only
- 6mm Clear toughened outer
- 16mm Argon filled warm edge spacer silicone bonded
- 8.8mm laminated inner pane with PVB interlayer

**Frame:** Rooflight frame is manufactured from extruded PVC profile with combination of insulating internal chambers and PUR insulation makes it fully thermally-broken and extremely thermally-efficient.

### Thermal Transmittance – Upstand:

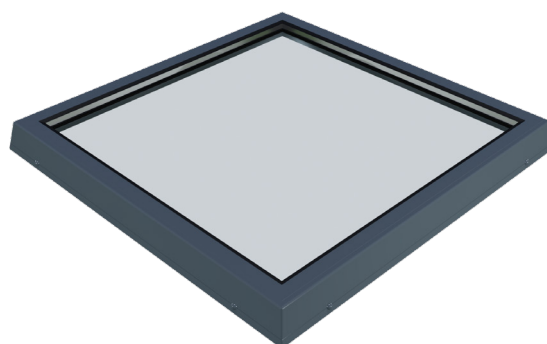
Vertical uPVC upstand with PUR insulation:

- $U_p = 0.92 \text{ W/m}^2\text{K}$

**Acoustic Performance:**  $R_w = 31$  (-1; -1) dB

### Roof Pitch

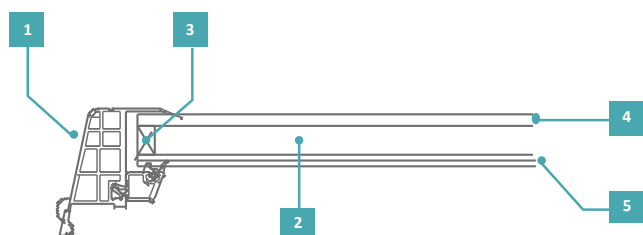
Can be installed in roof up to 25° pitch



## Features & Benefits

- Can be installed to a builder's upstand or vertical proprietary uPVC upstand
- 14 sizes available from stock with next-day delivery on most sizes
- All sizes Non-fragile CWCT tested to Class 1 or 2 depending on size
- For use with a range of ventilation options – manual, electric and fixed
- Should be installed at an angle between 5° and 25° (we recommend minimum 10° angle to minimise water retention to edges)
- Available in Anthracite Grey (RAL 7016) or Standard White (RAL 9010)

## Product Diagram



1	Frame	PVC
2	Gas	Argon
3	Warm spacer	✓
4	Toughened outerpane	✓
5	Laminated innerpane	✓
	Install pitch (upstand)	5–25°
	External framecolour	RAL 7016 anthracite grey RAL 9010 white
	Ud-Value *	1.26W/m <sup>2</sup> K

\* complete glass unit tested vertically

## Testing & Certification

Requirement	Result	Classification
Air Permeability	Class 2	EN 1873
Water Tightness	Pass (without penetration of water)	EN 1873
Up-effect Loading	UL 3000	EN 1873
Down-effect Loading	DL 2500	EN 1873
Impact Resistance	CWCT Class 1 (or 2 dependant on size up to R19)	–
Fire Class	Class B – s2, d0	EN 1873

## Rooflight Performance

Building Regulations (E&W) Approved Document L compliant design to achieve low U-Values:

- **Ud-Values:** As low as 1.26 W/m<sup>2</sup>K
- **G-Values:** As low as 0.60
- **Light Transmission:** Up to 76%

## Options & Accessories

### Standard comfort controls:

- For electric opening
- Option of retractive switch or comfort kit including a control panel, remote control and rain sensor

### Premium comfort controls:

- For electric opening
- Wireless controls which include open/close manual switch and internal and external temperature
- Wireless weather station which includes wind and rain sensor
- Option of handheld remote

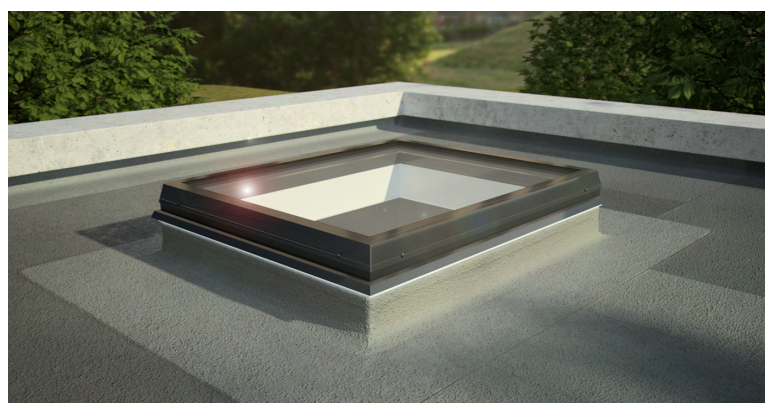
## Product Variations

### Ventilation options:

- Available as standard fixed unit
- Electrically opening units operated by 230v slimline chain actuator, white powder coated fitted within rooflight aperture
- Power requirements (amps): 230 VAC / 25 W
- Stroke length(mm): 200mm
- Motor cable 6 core 2.5m's length as standard
- Cable requirements: 4 core minimum (6 core if communication wires to be used for 2 tandem motors on same unit)
- Manually opening units incorporate winding spindle opening to approximately 200mm

## Guarantee

Whitesales product factories guarantee quality systems implementation process and environmental management systems.



## Cleaning & Maintenance

Any maintenance of rooflights must of course be carried out strictly in accordance with the relevant 'Health and Safety' regulations.

**Glazing:** ray.lux rooflights are 'Non-Fragile' but should not be trafficked. Wash and rinse glazing at intervals, to be determined by the owner. Use a solution of 5% mild soap of detergent cleaning solution sprayed on to wash the glazing surface. Follow immediately with clean water and promptly remove excess rinse water with a clean squeegee. DO NOT use abrasive cloth, sponges, cleaner or solvent acid-based solution on the glazing. Should stronger cleaning compounds be needed to remove stubborn stains, consult Whitesales for recommendations.

**uPVC Curb:** The curb is made of shock resistant PVC which does not need any additional finish. The curbs are equipped with a self-adhesive protection film on the inside, which must be removed at first use. When cleaning the curb, only use non-abrasive and neutral cleaning products, you will keep the smooth inner aspect.

**Electric motors:** Must be installed by qualified electrician. Test annually by an Approved Electrical Installations Testing Company. Physically check fixing brackets to ensure fixings are secure.

## Note

We reserve the right to make technical changes. For more information on ray.lux and other Whitesales products, visit [whitesales.co.uk](http://whitesales.co.uk).

## Downloads

For installation instructions, CAD drawings, 3D BIM objects, please visit [whitesales.co.uk](http://whitesales.co.uk).



## Size Chart

	Size ref	To suit external upstand size (mm)	To suit roof opening size (mm)
Square	RX S2	600 x 600	500 x 500
	RX S4	700 x 700	600 x 600
	RX S5	800 x 800	700 x 700
	RX S7	900 x 900	800 x 800
	RX S8	1000 x 1000	900 x 900
	RX S9	1100 x 1100	1000 x 1000
	RX S11	1300 x 1300	1200 x 1200
Rectangular	RX R5	700 x 1000	600 x 900
	RX R6	700 x 1300	600 x 1200
	RX R7	800 x 1100	700 x 1000
	RX R16	1000 x 1300	900 x 1200
	RX R17a	1100 x 1600	1000 x 1500
	RX R19	1100 x 2100	1000 x 2000
	RX R23c	1300 x 2300	1200 x 2200



**whitesales**  
experience.brighter