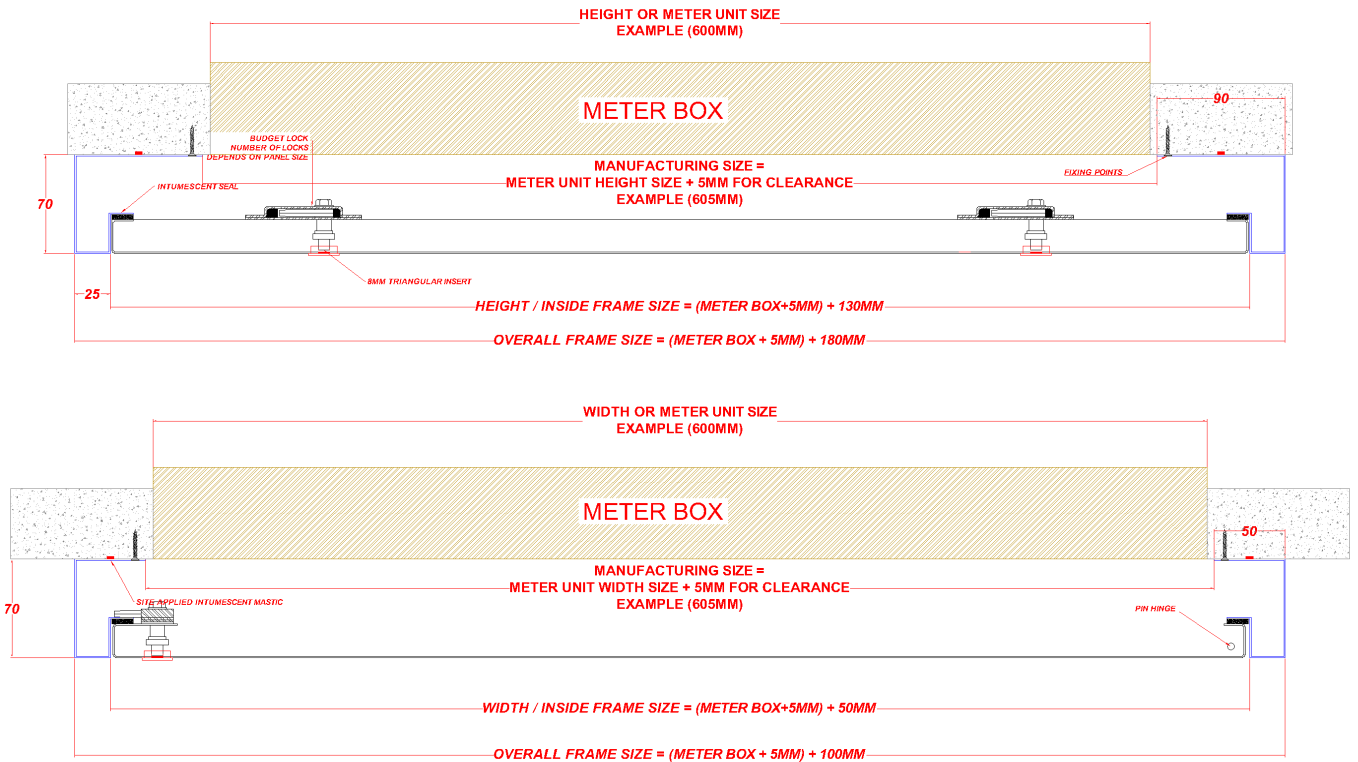




The R16-120-MD-PF-L11A-L33A Fire Rated range of Meter Boxes are simple to install and suitable for walls where regular maintenance to services / meters is required.



Description

This Meter Box is designed to be surface mounted on to a structural membrane of a block wall system. It is manufactured with a 25mm wide picture frame. The panel has a Metal faced door. The panels door leaf is locked in place via a Budget Lock & 8mm Triangular Meter Cabinet Insert as standard other lock options are available upon request. The Panel is Powder Coated RAL 9010 30% Gloss. Other colours available upon request.

Tests

The Panel is 2 Hour Fire Rated for integrity up to 1070x650mm in a wall application tested in accordance with BSEN 1634-1 from the meter side (Rear).

The Panel is not acoustic rated.

The Panel is not Air Pressure tested.

The Panel is not Smoke Tested.

Seals

Draught Seals **NO** Smoke Seals **NO** Air Seals **NO** Acoustic Seals **NO** Intumescent Seals **YES**

Manufacture

The R16-120-MD-PF-L11A-L33A is manufactured from Zintec Steel with a 0.9mm thick Door and a 0.9mm thick Frame.

Fitting

Make sure the structural opening is at least 5mm smaller than the panel size, back of frame opening size. E.G a 605x605mm panel size requires a 600x600mm hole size. Remove the door from the frame and place the frame on top of the set hole. Fix through the appropriate fixing holes within the frame ensuring the frame is pushed up against the structural opening surround. Check the frame is square by measuring corner to corner. Refit door and lock in place; the door and frame should be flush. Independent bracing or support may be required to take the weight of the Access Panel. **Apply Intumescent acrylic mastic on the rear of the frame, nominally 5mm wide sealing to the supporting construction.**

