

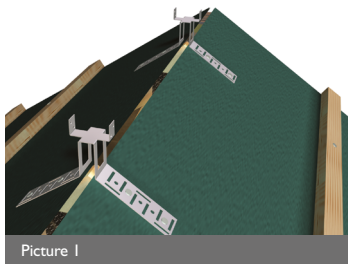
# Ridge Detailing

## Vented Ridge Pack (6m)

Providing 5000mm<sup>2</sup>/linear metre Free Vent Area

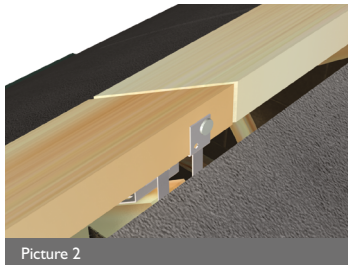
Conforms to the requirements of BS:8612

- 1) Lay the underlay in accordance with BS 5534. Before fixing the top tiling batten, fix a ridge batten bracket to the top of each truss using 25mm aluminium nails on either side (Picture 1). The brackets should be fixed such that 20mm penetration into the ridge batten is achievable when fixing the ridge tiles. Fix the top tiling batten.



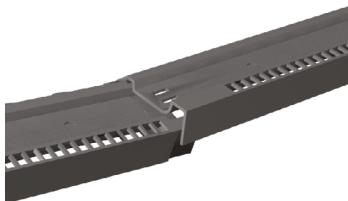
Picture 1

- 2) Locate a 25x50mm ridge batten into the ridge batten brackets and fix using 20mm nails on either side. Additional ridge battens should be spliced diagonally over a ridge batten bracket (Picture 2).



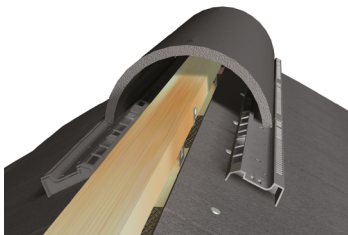
Picture 2

- 3) Lay roof tiles in accordance with BS 5534.



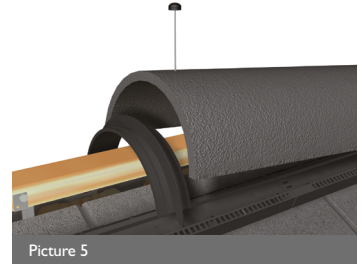
Picture 3

- 4) Snap together 3 top fillers to form a track for either side of the ridge. (Picture 3) Locate a nailhole block end ridge tile into the tracks centrally over the ridge line. The top fillers must be positioned with the smaller ventilation voids on the outside of the ridge tile (Picture 4).



Picture 4

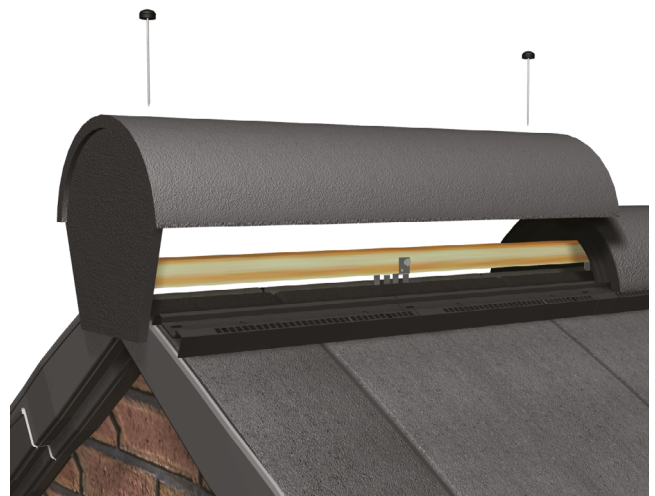
- 5) Place a ridge seal under the block end ridge and locate into the channels of the top fillers (Picture 5).



Picture 5

- 6) Secure the block end ridge using 2 x 80mm drive screws with washers and grommets.

- 7) Continue fixing nailhole ridge tiles, top fillers and ridge seals along the ridge. If cutting is necessary to maintain the aesthetics of the ridge line, the block end ridge must not be cut. Ridge tiles must not be cut to less than half of their original length. All ridge tiles must be twice fixed with drive screws supplied (re-drill nailholes if necessary). At the verge, trim the last top fillers and fix the block end ridge tile as described in step 6 to finish the ridge line (Picture 6).

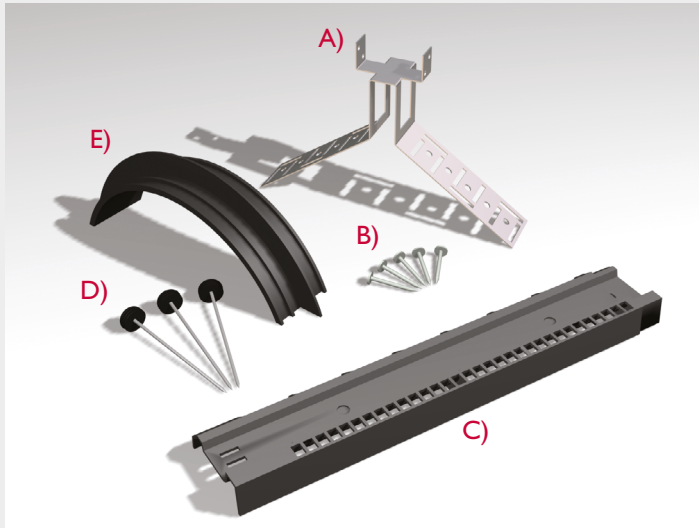


Picture 6



**Forticrete**

## Vented Ridge Pack (6m) - Flat Tiles



### Vented Ridge Pack (6m) - Flat Tiles

A) 10 no. Steel Ridge Batten Brackets

B) 40 no. 25mm Aluminium Nails

C) 40 no. Top Fillers

D) 28 no. 80mm Hammer Screws (1 x Washer, 1 Grommet)

E) 13 no. Ridge Seals

Colours available - Grey or Rustic

Conforms to the requirements of BS:8612

Plastic Type: Polypropylene

#### Roofing Systems & Technical Enquiries:

Forticrete

Boss Avenue, off Grovebury Road,  
Leighton Buzzard, Beds LU7 4SD

Tel: 01525 244900

Fax: 01525 850432

E-mail: [roofing@forticrete.com](mailto:roofing@forticrete.com)

Information on the complete range of Forticrete products can be found on the Internet at [www.forticrete.co.uk](http://www.forticrete.co.uk)

The information contained within this publication is as accurate as possible at the time of going to press. However, this document does not form part of any contract and Forticrete cannot accept liability for any errors or omissions.

Forticrete operates a policy of continuous product development and therefore reserves the right to alter specifications without notice.



*Gemini*®

**SL8**®

**MINISLATE**®

FX4578D



**Ibstock**  
At the heart of building