



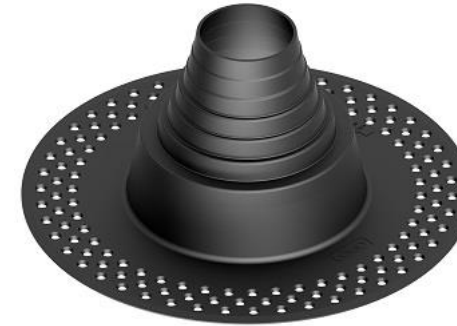
MULTIPLEX COLLARS IN PVC



** All technical properties indicated are average values typical of the raw material used for the production, and they are not specifications. All information contained in this document only gives a generic description of the material used.*

Technical data sheet for PVC			
Typical Physical-Mechanical Properties	Method	u.m.	Values
Weight density	ISO 1183	g/cm ³	1,24
Hardness	ISO 868	Shore A	70
Tensile strength	ISO 527	n/mm ²	≥ 13
Breaking strain	ISO 527	%	≥ 280

MULTIPLEX COLLARS IN TPE



**All technical properties indicated are average values typical of the raw material used for the production, and they are not specifications. All information contained in this document only gives a generic description of the material used.*

Technical data sheet for TPE			
Typical Physical-Mechanical Properties	Method	u.m.	Values
Weight density	ISO 1183	g/cm ³	1.06
Hardness	ISO 868	Shore A	90
Tensile strength	ISO 37	MPa	5.3
Breaking strain	ISO 37	%	350
Melt Flow Index	ISO 1133	g/10'	50
Tear Strength	ISO 34	kN/m	30