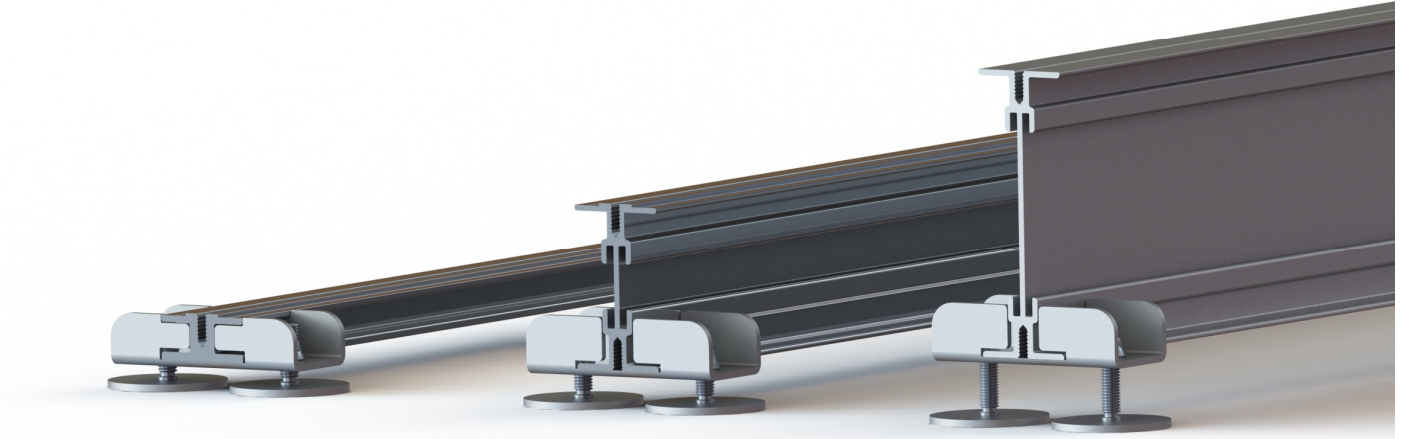


castle

COMPOSITES



Our system being of all aluminium construction is fire resistant , very competitive, and has several unique features, including the best non-slip surface on the market, with virtually no maintenance required.

The Castle aluminium decking range is further complimented with adjustable pedestal. The patented pedestal is designed for use on inclines of up to 5 degrees, without the need for additional slope compensators.

The pedestal is incredibly easy to adjust and can be slid along the beam to the desired position. The ease of installation and adjustment makes the pedestal a natural choice for the time conscious installer.

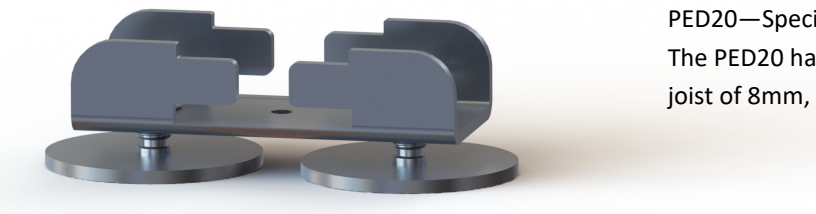
The pedestal is designed to work exclusively with our support joists. The following table defines the joist and pedestal combinations to achieve the desired buildup to the top surface of the joist structure.

	Build up including beam (excluding deck boards)	Joist	Pedestal
	128mm—165mm	120mm	PED50
	105mm—128mm	100mm	PED50
	79mm—105mm	70mm	PED50
	59mm—78mm	50mm	PED50
	41mm—58mm	20mm	PED20XR
	28mm—40mm	20mm	PED20

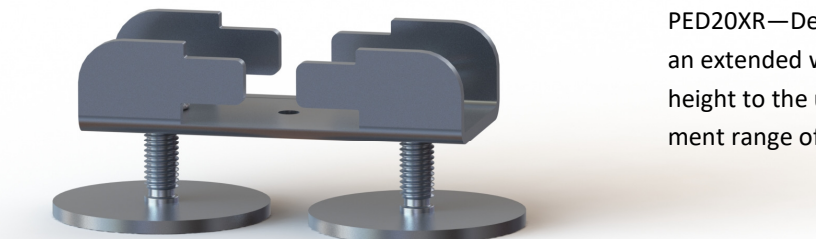
Technical Data

Weight	95 grams
Material	Aluminium 5251 H22
Minimum height	8mm from floor to underside of joist
Adjustment range	PED20—12mm PED20XR—22mm PED50— 35mm
Rated load capacity	500kg
Fire classification	A1 (all aluminium construction)

Ordering information



PED20—Specifically designed to work with the 20mm joist. The PED20 has a minimum height to the underside of the joist of 8mm, with an adjustment range of 12mm



PED20XR—Designed to work with the 20mm joist, but with an extended working range. The PED20XR has a minimum height to the underside of the joist of 18mm, with an adjustment range of 22mm



PED50—Designed to work with the 50,70, 100 and 120mm joists. The PED50 has a minimum height to the underside of the joist of 8mm, with an adjustment range of 35mm