

OverLap

**REAL
RIDGE®**

INSTALLATION GUIDE

MAYAN
ROOFING SYSTEMS

T: 01305 858401
E: info@mayanroofingsystems.com
A: 7 Kent Close
Granby Industrial Estate
Weymouth, Dorset
DT4 9TF

*This installation guide is subject to continued improvement. Please ensure you follow the latest version, which can be found at mayanroofingsystems.com/resources

www.mayanroofingsystems.com

ABOUT OVERLAP REALRIDGE

RealRidge is a patent pending overlap ridge system that uses real slates chemically and mechanically bonded to a GRP waterproofing layer. The unique, invisible RidgeFix fixing method easily and permanently fixes the ridge into position. The RealRidge system does not require an additional roll-out ridge fixing kit offering a considerable saving in materials and labour.

Each ridge comes pre-drilled and complete with two special RidgeFix stainless steel hardened retaining screws with high grade nitrile washers - two RidgeFix screws must be used to fix one ridge. The position of the fixing holes allows RealRidge to be fixed either into a ridge runner batten or into the top of the high-level roofing batten. The ridge can be easily cut and drilled on-site to fit many different applications or requirements. The highly versatile system includes ridge/hip tiles, block ends, hip ends/ starters and our special ridge caps.

Sizes and angles available:

Standard variations come in two basic sizes of:

- Grey slate - 500mm long with 145mm wings for smaller roofs
- 500mm long with 185mm wings

Please contact our sales office to arrange special orders using alternative slates.

Both sizes can be ordered in 4 basic angles of:

90° / 105° / 120° / 135°

Special order of:

150°

PRODUCTS AVAILABLE



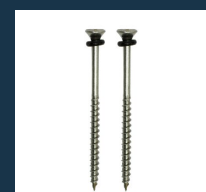
RIDGE/HIP TILE

RIDGE CAP

BLOCK END

HIP END

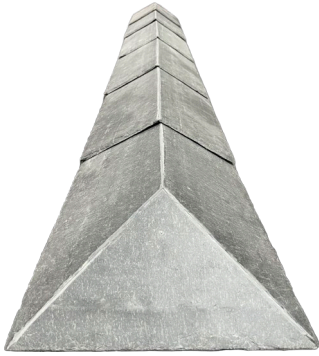
2 X RidgeFix screws provided with all ridge tiles, caps, block and hip ends.



Installation Information

Above 35° roof pitch - Hip and ridge minimum lap 125mm (375mm cover) or 2.66 ridge per linear metre
 Below 35° roof pitch - Hip and ridge minimum lap 150mm (350mm cover) or 2.86 ridge per linear metre

When used in the ridge application:



RealRidge angle	Suitable for roofs with a pitch
RealRidge 90° DOVLARI090500B	from 37.5 up to 45 degrees
RealRidge 105° DOVLARI105500B	from 30 up to 37.5 degrees
RealRidge 120° DOVLARI120500B	from 22.5 up to 30 degrees
RealRidge 135° DOVLARI135500B	Suitable for special roofs with a pitch up to 22.5 degrees using the ArmouredSlate low pitch slate roofing system.

When using ridge cap:



Ridge cap angle	Suitable for roofs with a pitch
RealRidge Cap 90° DOVLCAP090500B	for use with 90° ridge and 105° hip
RealRidge Cap 105° DOVLCAP105500B	for use with 105° ridge and 120° hip
RealRidge Cap 120° DOVLCAP120500B	for use with 120° ridge and 135° hip

RealRidge Cap can be fixed over or under the next ridge and is supplied unholed for the installer to drill according to their requirements.

When used in the hip application:

It is normal practice to use a hip that is one angle wider than the ridge being used.



Hip tile angle	Hip end	Suitable for roofs with a pitch
Use 105° RealRidge DOVLARI105500B	with hip end 105° DOVLHIP105500B	from 37.5 up to 45 degrees
Use 120° RealRidge DOVLARI120500B	with hip end 120° DOVLHIP120500B	from 30 up to 37.5 degrees
Use 135° RealRidge DOVLARI120500B	with hip end 135° DOVLHIP135500B	from 25 up to 30 degrees
Use 150° RealRidge DOVLARI150500B	with hip end 150° DOVLHIP150500B	Slates on a low-pitched roofs below 25° when installed using the ArmouredSlate low pitch roofing system.

Ridge drilling

Standard RealRidge and hip ends are supplied pre-drilled.



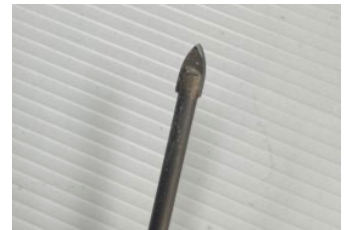
Block ends and ridge caps are supplied unholed because the position of the drill holes are dependent upon individual roof applications. Cut tiles also require drilling.

RidgeFix 60mm screws with nitrile washers are provided with all ridge tiles/caps and block/hip ends.



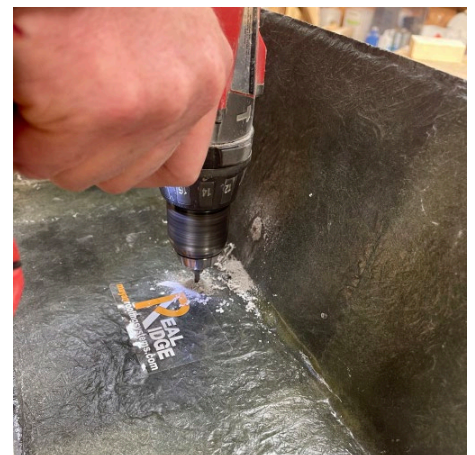
The following method should be applied when drilling the ridge:

1. RealRidge is easily drilled using a 5mm arrowhead drill (or standard masonry drill bit) - Supplied with block end.

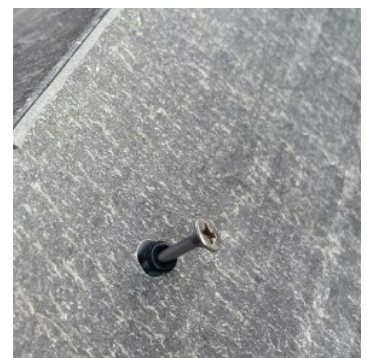


DO NOT USE HAMMER ACTION WHEN DRILLING REALRIDGE as it can break the slate.

2. Drill from the inside out whilst the ridge is fully supported on a board or batten where the drill will exit.



3. Use a 10mm masonry bit to form a 5mm countersink on the outer surface, so that the screw fits flush and the washer seats when installed.



Installing the Ridge

Batten placement

RealRidge can be installed onto either a ridge runner batten or standard top batten.



Installation with standard top battens



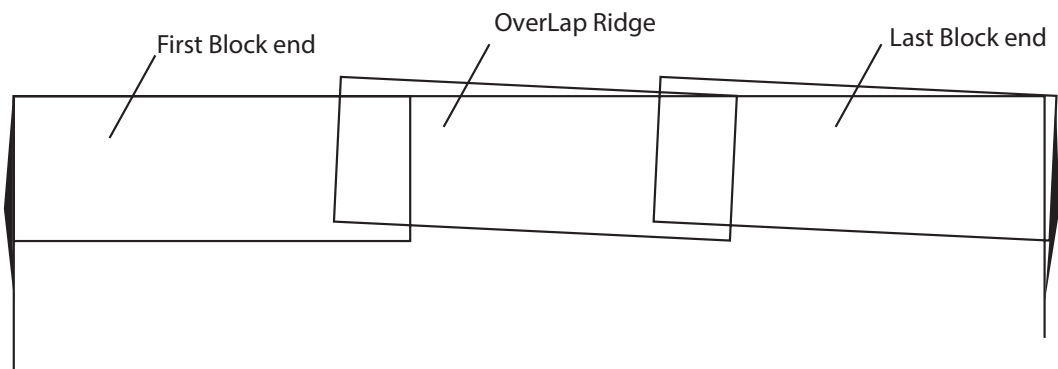
Installation with Ridge runner batten

Final top battens should be no more than 10mm down from the apex. Ridge runner battens should at all points be below the overall height of the slates to avoid the ridge being raised by the batten.

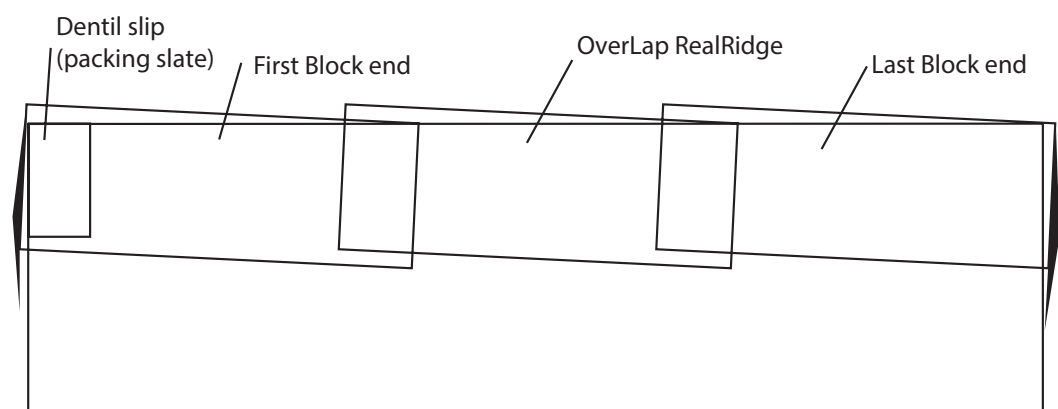
Block end

When installing the first block end the outer verge does not have a ridge tile below it, so it should be packed up with slates/dentil slip so that it is in line with the other slates installed and replicates the rest of the ridge tiles installed.

Without using a dentil slip (packing slate) the first block end will not follow the same line as the other installed ridge tiles.



By installing a dentil slip (packing slate) all ridge tiles will follow the same line.



Ensure the packing slate is properly secured.

It is preferable to start the course with a block end although it is not a requirement.

Careful consideration should always be given to fixing the block end. Block ends can be fixed through the top or through the end plate. Care must be taken when tightening the screws.

Block ends are unholed so they can be used as an overlay at the end of a row.

Two holes should be drilled 35mm down from the apex and 90mm in from the end of the ridge tile.



Screw the block end into position through the holes and into the batten using the three RidgeFix 60mm screws provided.

Install the next RealRidge

Install the next RealRidge by overlapping the first installed RealRidge by a minimum of 125mm so that the fixing screws of the previous ridge are fully covered.

Secure in place by screwing through the predrilled holes and into the roof or runner batten using the two RidgeFix 60mm stainless steel screws provided.



Continue across the roof to the end

The lap of the Ridge can be increased to ensure that the ridge tiles are in suitable positions and evenly spaced.

Do not decrease the lap below 125mm.



The final block end

The final block end can be cut to size using a disc cutter.

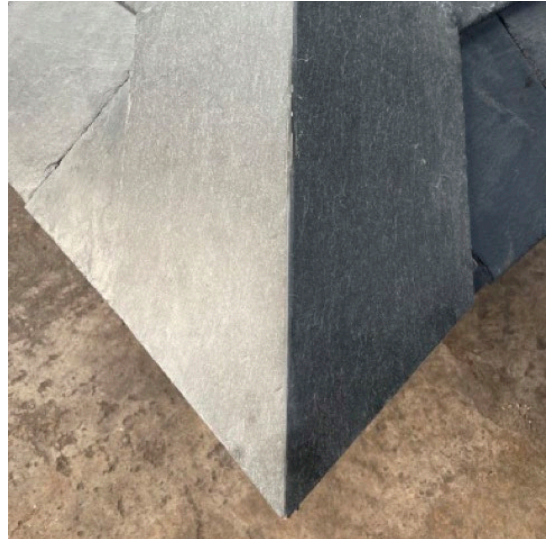
The final block-end should be drilled and countersunk in a suitable midpoint position of the cut ridge, 35mm down from the apex.

A minimum of two RidgeFix 60mm stainless steel screws should always be used to fix the block end.



Installing the Hip

- The hip should be installed starting from the lower corner up the roof using a hip end.



- The first hip end starter has a built-in packing piece on the underside, to raise the front edge and ensure it sits neatly at the correct level to follow the line of the hip.
- Fix the hip end into position using at least two RidgeFix 60mm stainless steel screws provided.
- The next hip should overlap the first by at least 125mm so that the fixings are fully covered. For an improved appearance, the length of the lap can be increased so the lower edges of the installed hips aligns with each course of installed slates.
- Continue up the hip, fixing each RealRidge in place using the two RidgeFix 60mm screws provided.

- Skill and judgement should be used to mitre cut the top hip tile. Holes should be drilled to the upper part of the cut hip in such a position that they are obscured by the ridge cap.



- The ridge cap should be pre-drilled and then positioned over the top of the hip junction and fixed in position using the two RidgeFix 60mm stainless steel screws provided. The ridge cap can also be face drilled and countersunk if necessary.
- Work back from the ridge cap installing the ridge tiles in the usual manner previously described.

PRODUCT SPECIFICATION

Overlap RealRidge Slate - Natural slate ridge and hip system



Colour:	Natural slate - grey
Size (width x length):	500mm long with 145mm wings for smaller roofs 500mm long with 185mm wings
Thickness:	Approx 6-8mm
Weight:	3.25 kg (average) for ridge/hip tile and hip end 3.5 kg (average) for block end
Vent:	5mm continuous
Angles available:	90° ; 105° ; 120° ; 135° 150° special order

RidgeFix 60 - 60mm stainless steel screws with nitrile washer



Stainless steel pozi 4.5 x 60mm

2 x supplied with RealRidge Tile
3 x supplied with RealRidge Block end

RidgeFix₆₀

Site Safety

In all cases ensure a safe working environment. Site health and safety measures must be properly adhered to.

- Personal protective equipment must always be worn where required.
- RealRidge is a heavy object. Care must be taken when lifting and handling to avoid injury.
- The products must be properly handled and stored to avoid becoming a dangerous missile on site.

Document code: RROVLIG01
04/2022