

TECHNICAL DATASHEET

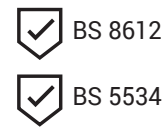
K-FFV

Uni-Fix Dry Verge





TECHNICAL DATASHEET K-FFV UNI-FIX DRY VERGE



Product Features & Benefits

- Meets the requirements of BS 5534
- Conforms to BS 8612 (Independently tested by the BRE)
- Eliminates the use of mortar
- Dry Fix system
- Can be installed in all weather conditions
- Easy to install
- Available in 4 colour options
- Weatherproof and maintenance free
- UV stable
- Prevents entry of birds and large insects

Area of Application

- Refurbishment or new build on roofs from 20° to 90° roof pitch
- For use on concrete interlocking tiles between 260-355mm batten gauge

Materials

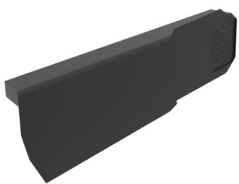
- Dry Verge unit – polypropylene
- Starter piece – polypropylene
- Ridge End Cap – polypropylene
- Batten End Clip - stainless steel

Colours

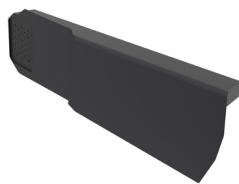
- Brown, Slate grey, Terracotta, Black

Dimensions

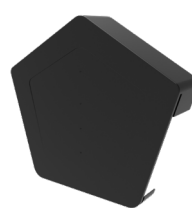
- 420mm long x 160mm wide x 57mm deep (max. dimensions)



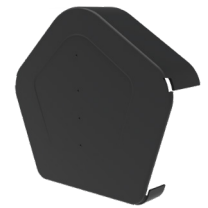
K-FFV401
Uni-Fix Dry Verge
Unit Right Hand



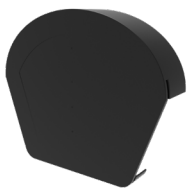
K-FFV402
Uni-Fix Dry Verge
Unit Left Hand



K-FFV403
Uni-Fix Universal
Angled Ridge Cap



K-FFV407BL
Uni-Fix Multi Ridge
Cap



K-FFV404
Uni-Fix Half Round
Ridge Cap



K-FFV405
Dry Verge
Starter Unit



K-FFV408/409
Mono Ridge Cap
Left / Right Hand



K-FFV406
Batten End Clip

