

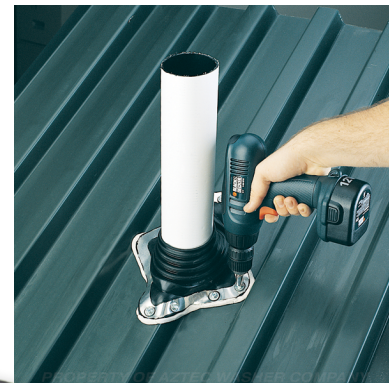
# Standard Master Flash®

**20  
YEAR  
WARRANTY**

ISO Quality, Price & Availability / TWO COMPOUNDS / 11SIZES / 10 COLORS

	EPDM	SILICONE
ADVANCED OZONE RESISTANCE tested to...	70 hour @ 500 pphm	70 hour @ 500 pphm
HIGH TEMPERATURE RESISTANCE		
Tested to		
Intermittent	+135°C (+275°F)	+260°C (+500°F)
Continuous	+100°C (+212°F)	+225°C (+437°F)
LOW TEMPERATURE RESISTANCE tested to...	-55°C (-67°F)	-74°C (-101°F)
COMPRESSION SET minimum...	25%	50%

\*Complete specification data and testing methods are available upon request.



## Design Excellence

Aztec's flexible design meets all roofing needs. Sleeve flexibility accommodates vibration and pipe movement caused by expansion contraction. The soft aluminum base easily conforms to most metal roof profiles.



## Weather Protection

Made of E.P.D.M. or Silicone, these flashings are compounded specifically for maximum resistance to weathering due to ozone and ultraviolet light.



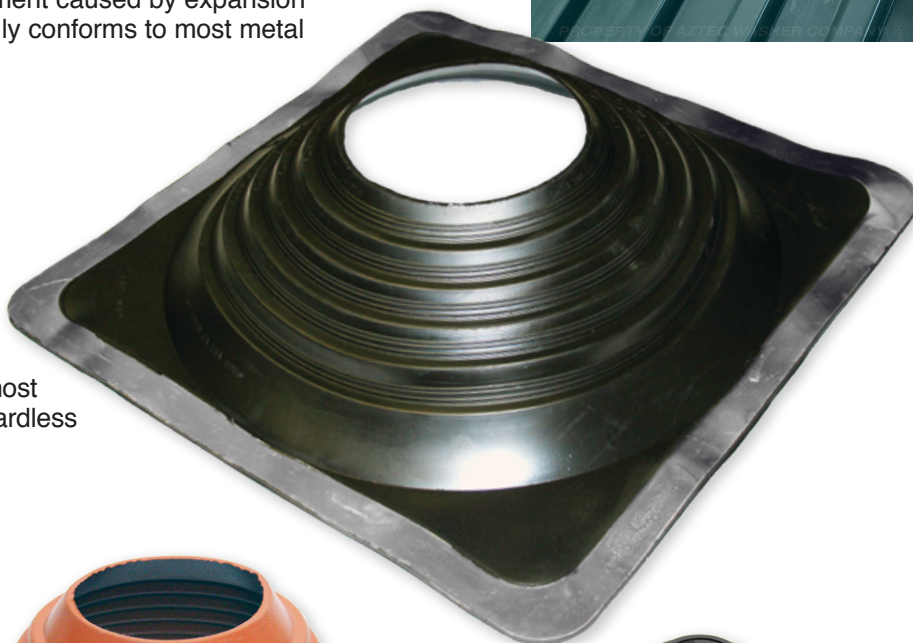
## Base Flexibility

The base is designed to form a seal on most panel configurations and roof pitches regardless of pipe location.



## Easy On-Site Customization

Fast, one piece construction allows for easy on-site installation in usually 5 minutes.



Master Flash® was used to create a new engineering standard for profiled roofing by the International Association of Plumbing and Mechanical Officials (for the Uniform Plumbing Code) and remains the only product listed. These products are also listed for use with Type B vents.

The addition of fire retarding agents milled directly into the rubber compound created a self extinguishing feature which enables it to be used with type "B" vents. Listed with IAPMO certification No. 3121

To see our complete product line go to [www.aztecwasher.com](http://www.aztecwasher.com)



# Standard Master Flash®



## The Original

### Sizing Chart:

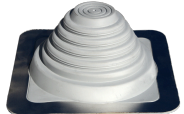
Check diameter of pipe. Select the appropriate Standard Master Flash® for pipe or duct diameter. Only use maximum pipe diameters on minimal roof angles. For extreme pitch or surface irregularity select next larger size. Then refer to the part number for the Standard Master Flash® desired.



**BROWN**



**BLACK**



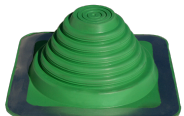
**GREY**



**WHITE**



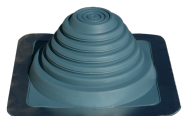
**DARK GREEN**



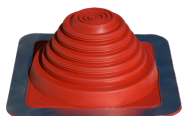
**LIGHT GREEN**



**DARK BLUE**



**LIGHT BLUE**



**BRIGHT RED**



**TERRA COTTA**

	Pipe Size	Compound	Part No.		Flashing Details	
<b>Mini</b>	1/8" - 3/4" (3 mm - 19mm)	Black EPDM	SQ051BA		A-Top opening diameter	Closed
		Grey EPDM	SQ051GA		B-Cut to suit pipe size	1/8" - 3/4" (3-19mm)
		Silicone	SQ051RA		C-Base dimensions	2 - 1/4" (57mm)
<b>#1</b>	1/4" - 2-3/4" (6 - 70mm)	Black EPDM	SQ101BA		A-Top opening diameter	Closed
		Grey EPDM	SQ101GA		B-Cut to suit pipe size	1/4" - 2-3/4" (6 - 70mm)
		Silicone	SQ101RA		C-Base dimensions	4-1/2" (114mm)
<b>#2</b>	7/8" - 4" (22 - 101mm)	Black EPDM	SQ201BA		A-Top opening diameter	7/8" (22mm)
		Grey EPDM	SQ201GA		B-Cut to suit pipe size	7/8" - 4" (22 - 101mm)
		Silicone	SQ201RA		C-Base dimensions	6" (152mm)
<b>#3</b>	1/4" - 5-3/4" (6 - 146mm)	Black EPDM	SQ301BA		A-Top opening diameter	Closed
		Grey EPDM	SQ301GA		B-Cut to suit pipe size	1/4" - 5-3/4" (6 - 146mm)
		Silicone	SQ301RA		C-Base dimensions	8" (203mm)
<b>#4</b>	2-3/4" - 7" (70 - 177mm)	Black EPDM	SQ401BA		A-Top opening diameter	2-1/4" (57mm)
		Grey EPDM	SQ401GA		B-Cut to suit pipe size	2-3/4" - 7" (70 - 177mm)
		Silicone	SQ401RA		C-Base dimensions	10" (254mm)
<b>#5</b>	4" - 8-1/4" (101 - 209mm)	Black EPDM	SQ501BA		A-Top opening diameter	3-1/2 (89mm)
		Grey EPDM	SQ501GA		B-Cut to suit pipe size	4" - 8-1/4" (101 - 209mm)
		Silicone	SQ501RA		C-Base dimensions	11" (279mm)
<b>#6</b>	4-3/4" - 10" (121 - 254mm)	Black EPDM	SQ601BA		A-Top opening diameter	3-3/4" (95mm)
		Grey EPDM	SQ601GA		B-Cut to suit pipe size	4-3/4" - 10" (121 - 254mm)
		Silicone	SQ601RA		C-Base dimensions	12" (304mm)
<b>#7</b>	5-1/2" - 11-1/2" (140 - 292mm)	Black EPDM	SQ701BA		A-Top opening diameter	4-3/4" (120mm)
		Grey EPDM	SQ701GA		B-Cut to suit pipe size	5-1/2" - 11-1/2" (140 - 292mm)
		Silicone	SQ701RA		C-Base dimensions	14" (355mm)
<b>#8</b>	6-3/4" - 13-1/2" (171 - 343mm)	Black EPDM	SQ801BA		A-Top opening diameter	5-1/2" (140mm)
		Grey EPDM	SQ801GA		B-Cut to suit pipe size	6-3/4" - 13-1/2" (171 - 343mm)
		Silicone	SQ802RA		C-Base dimensions	17" (431mm)
<b>#9</b>	9-1/2" - 20-1/2" (241 - 520mm)	Black EPDM	SQ901BA		A-Top opening diameter	8" (203mm)
		Grey EPDM	SQ901GA		B-Cut to suit pipe size	9-1/2" - 20-1/2" (241 - 520mm)
		Silicone	SQ902RA		C-Base dimensions	25" (635mm)
<b>#9X</b>	8" - 20-1/2" (203 - 520mm)	Black EPDM	SQ901BX		A-Top opening diameter	6" (152mm)
					B-Cut to suit pipe size	8" - 20-1/2" (203 - 520mm)
					C-Base dimensions	25" (635mm)
<b>Maxi</b>	12" - 28-1/2" (304 - 724mm)	Black EPDM	SQ951BA		A-Top opening diameter	10-1/4" (260mm)
		Grey EPDM	SQ951GA		B-Cut to suit pipe size	12" - 28-1/2" (304 - 724mm)
		Silicone	SQ952RA		C-Base dimensions	34" (863mm)