



Performance Plus Slate Dry Verge Trim (T1)

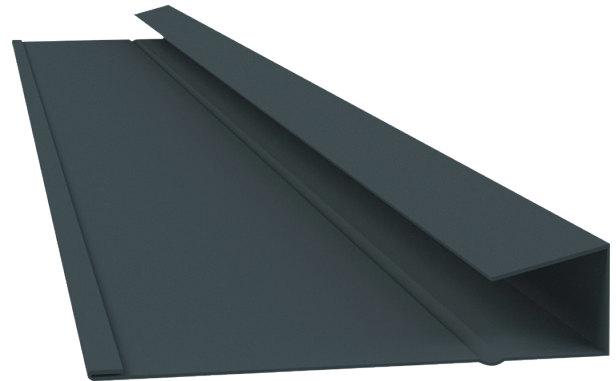
Product Information

The Kytun Performance Plus Slate Dry Verge Trim (T1) permanently secures full and half width slates on pitched roof verges and gives an attractive maintenance free finish to the roofline. It provides a neat, continuous and totally weatherproof finish to the gable.

The components are manufactured from high grade pre-primed polyester coated or plastisol coated galvanised steel which produces a textured finish.

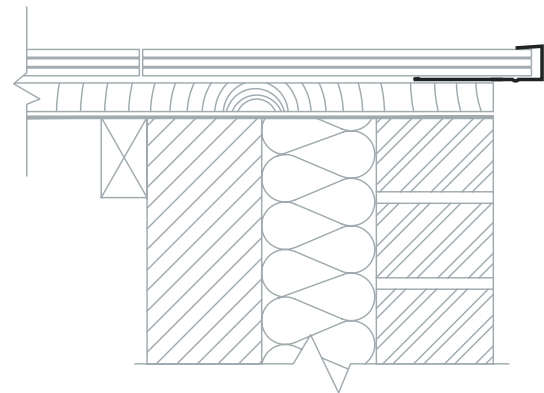


Performance Plus Slate Dry Verge Trim (T1)



Product Features

- Permanently secures half width slates as narrow as 125mm at the verge edge.”
- BRE tested and proven to resist at least 10x any anticipated wind load force anywhere in the UK or Ireland.
- Provides full driving rain protection as demonstrated by independent BRE testing.
- Integrated ‘Drip System’ which allows for self drainage of rain water into the eaves gutter.
- Extremely easy and quick to install.
- Requires no maintenance once installed.
- Can be fully customised.
- Available in Black or Blue/Black.



Dimensions

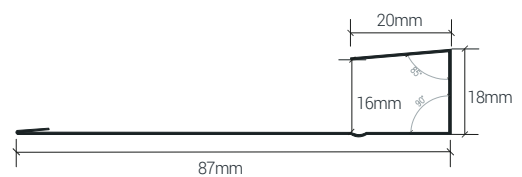
Performance Plus Slate Dry Verge Trim (T1) C01/C01N

Overall length: 3000mm

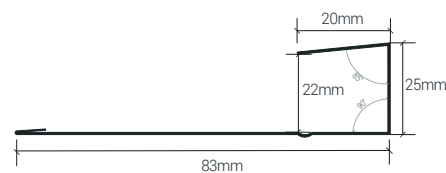
Code	Size	Colour	Pk Qty
C01	18mm x 3m	Blk • Blue/Blk	8
C01N	25mm x 3m	Blk • Blue/Blk	8

Aluminium Polyester Coated

C01 Slate Dry Verge also available in Galvanised Steel



4-5mm Fibre Cement Slate



6-8mm Natural Slate



Installation

1. The underlay and battens are to be laid and cut flush with outer edge of gable wall or bargeboard. (Fig.1a). The gutter position should be set up to allow the verge trim channel to run into it. (Fig.1b)
2. Position the verge trim on top of the battens and align against the batten ends with the drip outside the batten end. Allow for construction detail. Ensure the Verge Trim is fixed at every batten with 40mm long galvanised clout nail (Fig.2).
3. Jointing using an internal sleeve: Slide the sleeve halfway into the verge already fixed onto the roof (Fig.3a). Slide the next piece of trim over the jointer and butt against other trim. Fix verge as above (Fig.3b). Seal the joint using a low modulus mastic sealant by running it around the joint.



Fig 1a.

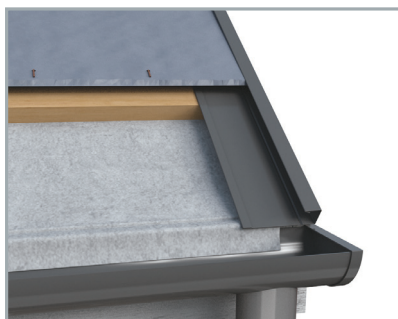


Fig 1b.



Fig 2.



Fig 3a.



Fig 3b.

Kytun

IRL (Head Office)
Keenaghan
Kilmacrenan
Letterkenny, Co. Donegal
F92 DW64

T: +353 (0) 74 91 39500
E: info@kytun.com

UK (Manufacturing Centre)
Senhouse Road
Darlington
Durham
DL1 4YB

T: +44 (0) 168 429 3702
E: info@kytun.com