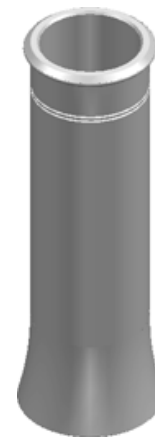


MARKINGS APPLIED AT 'Y'

WTK DATE (DDMMYY)

MARKINGS APPLIED AT 'X'

WTK EN13502 **CE**
 300/OD
 260/ID
 900/HT



ISOMETRIC VIEW
1:20

OPEN-TOPPED FLUE TERMINAL
TO BS EN 13502 - TYPE 0

TO SPECIFY COLOUR, ADD SUFFIX TO CODE
R = RED, B = BUFF, X = BLACK, G = GLAZED



THIS DRAWING IS THE PROPERTY OF WT KNOWLES & SONS LTD AND MUST NOT BE USED IN ANY WAY PREJUDICIAL TO THEIR INTERESTS			
± 10% TOLERANCE TO BE APPLIED ON ALL DIMENSIONS			
WEIGHT = 25.20 kg	DRAWN: GB	10-10-07	SCALE
DO NOT SCALE	ISSUE: 5	10-10-18	PROJECTION
		1:5	

TITLE :- CANNON HEAD POT	
DRAWING No. :- KYM160	A4