



HardRock® Multi-Fix Recovery Board

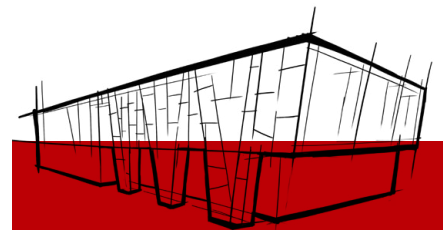
Overlay board developed for flat refurbishment.

HardRock® Multi-Fix Recovery Board has been specifically developed for use on flat roof refurbishment projects.

HardRock Multi-Fix Recovery Board is manufactured with an integral mineral coated glass fibre fleece, providing a substrate for bonding waterproofing membranes to the insulation.

HardRock Multi-Fix Recovery Board is compatible with most commonly used flat roof membranes including single-ply & EPDM, bitumen membranes, and liquid membrane systems.

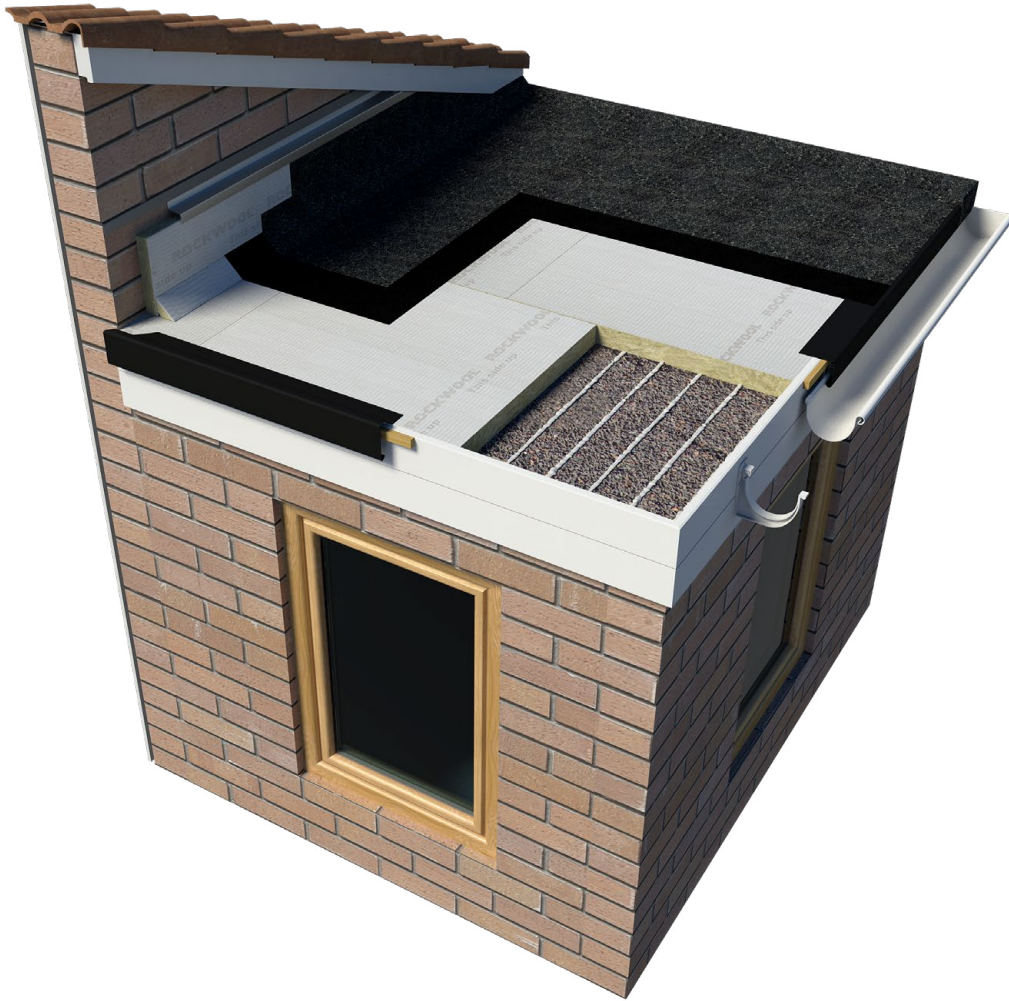
- Can be installed directly over the in-situ roof membrane.
- Can accommodate minor imperfections on the existing external finish.
- Can be adhesively applied or mechanically fixed.
- Suitable for torch-applied bitumen systems.
- Compatible with most roof coverings.
- Reduces external noise ingress (see test report – C/23008/T02 on Page 3).



Developed for use on flat roof refurbishment projects, HardRock Multi-Fix Recovery Board is compatible with all commonly used flat roof membranes including; Single-ply, EPDM, bitumen membranes, and liquid membrane systems.

HardRock Multi-Fix Recovery Board is suitable for both domestic and commercial refurbishment, in addition to upstand details, and can be installed directly over the in-situ roof membrane covering any minor imperfections on the existing external finish.

HardRock Multi-Fix Recovery Board



APPLICATIONS

HardRock Multi-Fix Recovery Board is suited to:

- Domestic refurbishment
- Commercial refurbishment
- Upstand details

HardRock Multi-Fix Recovery Boards are non-combustible, achieve a Euroclass reaction to fire classification of A2-s1,d0, and can be used to help reduce external noise pollution.

HardRock Multi-Fix Recovery Board

PERFORMANCE

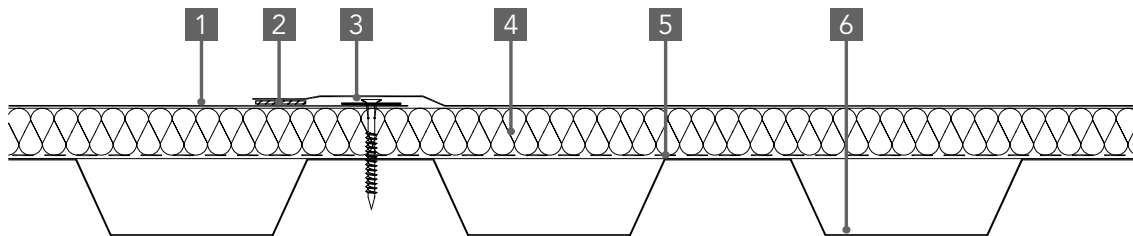
Product performance	
Thermal conductivity	0.039 W/mK
Fire classification	Euroclass A2-s1,d0

Acoustic performance

When tested in accordance with BS EN ISO 10140-2:2010 as an individual 30mm layer within a single-ply flat roof system, onto a 0.7mm profiled steel deck, the system performance achieved R_w 33 dB (see test report – C/23008/T02 below).

HardRock Multi-Fix Recovery Board is suitable for flat roof refurbishment on schools and supports the current acoustic refurbishment standards as listed in Table 1 of the Building Bulletin 93 document, "Acoustic Design of Schools: Performance Standards."

Test report – C/23008/T02



1. 1.2mm gauge single-ply membrane – mechanically fixed
2. Hot air weld
3. Mechanical fixing for metal deck – screw and stress plate
4. 30mm HardRock Multi-Fix Recovery Board
5. 0.25mm self adhered AVCL
6. Tata D60 roof deck

HardRock Multi-Fix Recovery Board

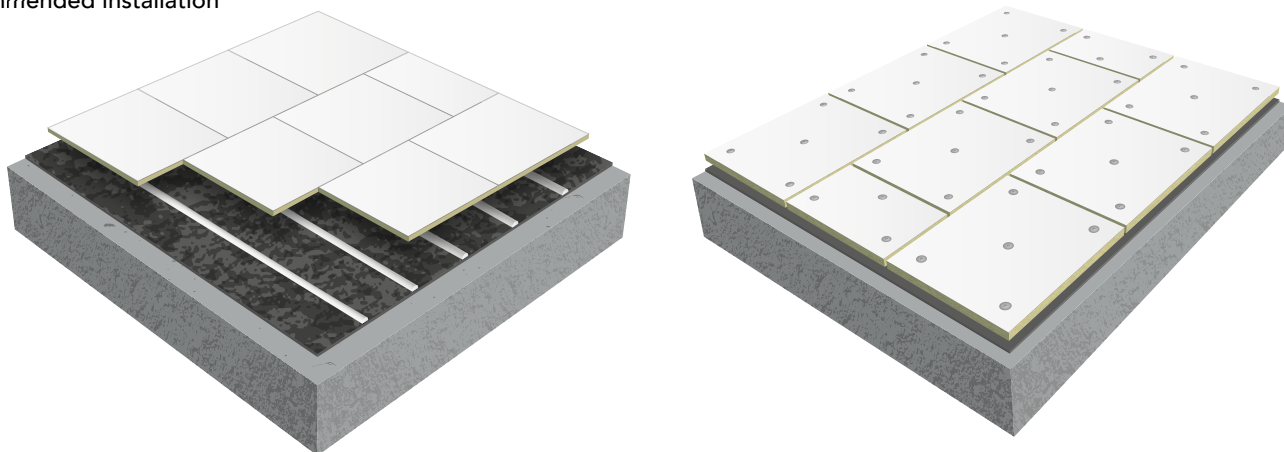
INSTALLATION

Warm roofs and cold ventilated roofs

HardRock Multi-Fix Recovery Board has been specifically developed for use on flat roof refurbishment projects.

- Remove any loose debris.
- Mechanically fix or bond HardRock Multi-Fix Recovery Board through/to the existing roofing membrane and/or insulation, into the roof deck, always ensuring that the existing deck is in a reasonable condition. A compatible adhesive must be used for bonding the insulation to the existing surfaces.
- 4N° fixings per m² are required (5N° per board) for all bonded and torch-applied membranes (see recommended installation section containing fixing pattern, below).
- For all applications the boards should be laid in a staggered pattern with the mineral fleece facing upwards.
- Apply the new membrane to HardRock Multi-Fix Recovery Board (see fixing guidelines overleaf).
- The existing cross ventilation of cold roof systems must always be maintained.

Recommended installation



ROCKWOOL recommends the use of a plastic tube washer, or stress plate support thread when mechanically fastening roof boards to metal, concrete, or timber deck warm roof systems. A stress plate and fastener fixings are required for ventilated timber deck cold roof systems.

Membrane types & fixing guidelines

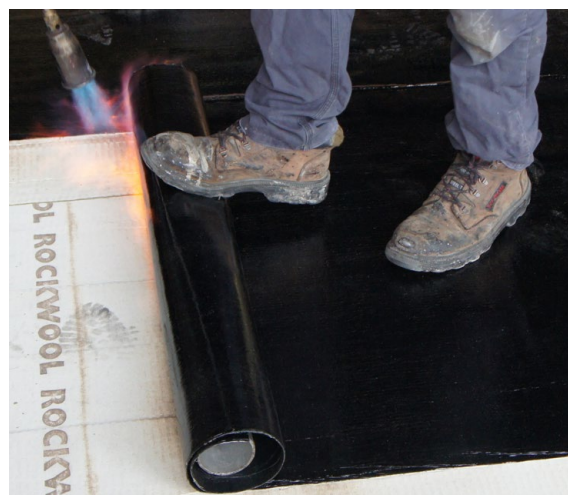
HardRock Multi-Fix Recovery Boards are compatible with mechanically fixed, bonded, and torch-applied flat roof membrane systems.

Torch-applied bituminous membranes

Due to its heat resistance during installation, HardRock Multi-Fix Recovery Board is suitable for torch and hot bitumen applications. It has been designed for use with fully bonded, torch-applied multi-layer bituminous systems.

When applying the bitumen membrane, always torch with minimum heat. Torch the roll of waterproofing felt using appropriate flame/edge guards at all times.

Torch-applied bituminous membranes should always be installed in accordance with the membrane manufacturers' guidelines.



HardRock Multi-Fix Recovery Board

Liquid membranes

Cold liquid-applied membranes are suitable for roof refurbishment, roof details, and roof repairs. HardRock Multi-Fix Recovery Board is designed for use with a number of liquid-applied membranes.

In addition to the installation procedures quoted in the fixing guidelines section, all board joints must be taped prior to the application of the liquid membrane system.

Fully/partially adhered single-ply, EPDM

HardRock Multi-Fix Recovery Board can be used with fully or partially adhered single-ply and EPDM membranes. The fleece facing of the board provides a substrate for bonding waterproofing membranes to the insulation.

A single-ply/EPDM membrane which has been tested and deemed compatible for bonding to HardRock Multi-Fix Recovery Board is to be applied to the insulation with the relevant adhesive.

Where the membrane is fully bonded to the insulation surface, advice and guidance must be sought by the membrane manufacturer on suitable coverage rates.



HardRock Multi-Fix Recovery Board

BUILDING SAFETY AND PRODUCT USE

LEGAL NOTICES

General safety requirements – Building Safety Act 2022

ROCKWOOL Limited is committed to supporting specifiers, resellers, and users of ROCKWOOL products for the full life cycle of the product to comply with the obligations and responsibilities set out in the Building Safety Act 2022. With regard to the general safety requirements of the Act, ROCKWOOL Limited cannot control or foresee every situation where its products might be used. We therefore strongly advise that specifiers, resellers, and users contact us where use of ROCKWOOL products is contemplated in applications different from those explicitly described in the latest, relevant ROCKWOOL product datasheets; especially in applications that can be reasonably foreseen as critical to safety.

ROCKWOOL Limited reserves the right to amend the specification of its products without notice. Changes to the ROCKWOOL manufacturing process, or to pertinent regulations, may be reflected in changes to tested and certified product performance. Whilst ROCKWOOL Limited endeavours to keep its publications up to date, readers will appreciate that between publications there may be pertinent changes in the law or other developments affecting the accuracy of the information contained in our publications.

ROCKWOOL Limited does not accept responsibility for the consequences of using (including testing or certifying) its products in applications different from those explicitly described in the relevant ROCKWOOL product datasheets. Expert advice should be sought, and ROCKWOOL Limited should be contacted, where such different use is contemplated, or where the extent of any use described by ROCKWOOL Limited is in doubt.

The ROCKWOOL Trademark

ROCKWOOL® - our trademark

The ROCKWOOL trademark was initially registered in Denmark as a logo mark back in 1936. In 1937, it was accompanied with a word mark registration; a registration which is now extended to more than 60 countries around the world.

The ROCKWOOL trademark is one of the most important assets of the ROCKWOOL Group, and is therefore well-protected and defended by ROCKWOOL throughout the world.

If you require permission to use the ROCKWOOL logo for your business, advertising or promotion, you must apply for a Trade Mark Usage Agreement.

To apply, write to:
marketcom@rockwool.com

Trademarks

Registered trademarks of the ROCKWOOL Group include but are not limited to:

ROCKWOOL®, RockClose®, RainScreen Duo Slab®, HardRock®, RockFloor®, Flexi®, RockFall®, FirePro®, DuctRock®, BeamClad®, NyRock®

© ROCKWOOL 2025.
All rights reserved.

Health and safety

A Material Safety Data Sheet is available and can be downloaded from rockwool.com/uk to assist in the preparation of risk assessments, as required by the Control of Substances Hazardous to Health Regulations (COSHH).

Photography and illustrations

The product illustrations are the property of ROCKWOOL Limited and have been created for indicative purposes only.

Unless indicated below, the photography and illustrations used in this guide are the property of ROCKWOOL Limited. We reserve all rights to the usage of these images.

If you require permission to use ROCKWOOL images, you must apply for a Usage Agreement.

To apply, write to:
marketcom@rockwool.com

HardRock Multi-Fix Recovery Board

Company:	ROCKWOOL Limited
Version:	Version 2.02 December 2025 (to check this is the latest version, please refer to rockwool.com/uk)
Revised on:	17.12.2025
Product name:	HardRock Multi-Fix Recovery Board
Replaces version:	Version 2.01 August 2025
Changes made:	N/A
Additional information:	N/A

Please ensure you are using the latest version of this document by verifying it on our official website. Do not rely on printed or previously downloaded copies, as these may be out of date.

Please contact the ROCKWOOL Technical Support Team if you would like to access archived versions of this document.

HardRock Multi-Fix Recovery Board

ROCKWOOL stone wool – safe to install and live alongside

There are no hazardous classifications associated with stone wool insulation manufactured by ROCKWOOL UK according to EU REACH and UK REACH regulations on health and the environment.

ROCKWOOL safe use instruction sheets and material safety data sheets (where applicable) can be downloaded [here](#).



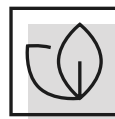
Sustainability

ROCKWOOL products are used to help enrich modern living, supporting more resilient and comfortable buildings.

We transform abundant, natural volcanic rock into stone wool insulation products that help our customers tackle energy consumption, noise pollution, fire resilience, and climate change challenges such as water scarcity and flooding.

Since our stone wool is endlessly recyclable with no loss in its performance properties, we can take back clean, uncontaminated new off-cuts, and unused ROCKWOOL stone wool insulation from construction sites in the UK. Our service, Rockcycle®, takes back our stone wool and recycles it back into production where it is used to make new ROCKWOOL products.

Our annual sustainability reports, which set out progress against our sustainability goals and further details of the positive impacts of using our products, can be found on our website.



Environment

ROCKWOOL takes a fact-based, auditable approach to documenting our progress in maximising our products' positive impact and minimising the effect our operations have on the environment, backed by third-party references and methodologies. Further details can be found online in our annual sustainability report.

Our high-tech production process uses filters, pre-heaters, after-burners, and other cleaning and collection systems that help to reduce the effects of our manufacturing operations on the environment.

ROCKWOOL stone wool insulation does not contain (and has never contained) gases that have ozone depletion potential (ODP) or global warming potential (GWP).

