



Gemini Key Information



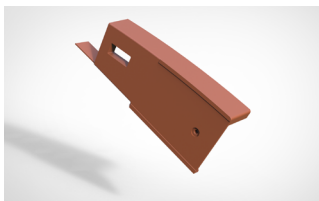
Overall Length	270mm
Hanging Length	243mm
Overall Width	337mm
Cover Width	316mm
Mass (approx.)	2.8kg

Colours

- Grey
- Brown
- Red
- Dark Blend
- Sunrise Blend
- Mixed Russet
- Mercia Blend (Sandfaced)
- Ember Blend (Sandfaced)
- Welsh Blue (Made to order)

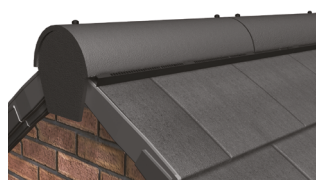
	Pitch	Batten Spacing	Headlap	Tiles Per m ²	Batten Per m ²	Mass Per m ²	Nail Size
Gemini Smooth	22.5°-29.5°	190mm max	80mm min	16.66/m ²	5.26lm	47.47kg	45mm x 3.35mm
		175mm min	95mm max	18.08/ m ²	5.71lm	51.54kg	
Gemini Sandfaced	30°-70°	195mm max	75mm min	16.23/m ²	5.13lm	46.25kg	45mm x 3.35mm
		175mm min	95mm max	18.08/m ²	5.71lm	51.54kg	
Gemini Sandfaced	30-70mm	195mm max	75mm min	16.23/m ²	5.13lm	46.25kg	45mm x 3.35mm
		175mm min	95mm max	18.08/m ²	5.71lm	51.54kg	

Verge System



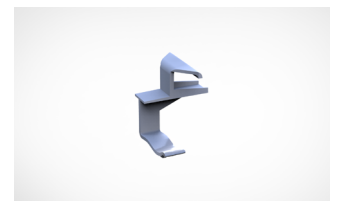
Format : Individual Units
 Coverage: 2.6m - 2.9m
 Left and Right Hand Packs Available
 Starter / End Parts included
 15 Units per pack

Ridge System



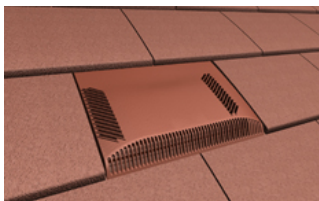
Coverage: 6m Pack
 Use With: Half Round or Uni Angle Ridge (NH)
 5000mm²/linear metre free vent area
 Pitch Limits: 22.5° - 55°

Tile Clips



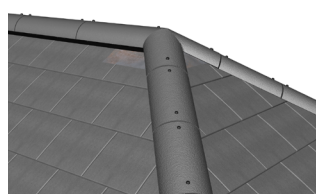
Packs of 100
 Tile to Tile Clip
 Made from Plastic

Vent Tiles



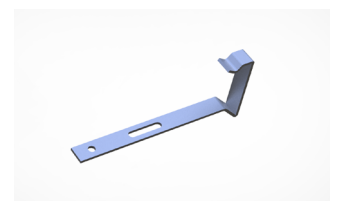
Air Vent - Vent Tile Only
 Soil Vent - Vent Tile, 110mm flexi pipe
 7860mm² Free Vent Area
 Pitch Limits: 22.5° - 55°

Hip System



Coverage: 6m Pack
 Use With: Third Round or Uni Angle Hips (NH)
 Not Ventilated
 Pitch Limits: 22.5° - 55°

Verge Clips



Packs of 50
 Nails to batten
 Use with mortar bedded verge
 Made from Stainless Steel





Gemini Product Codes

Tiles & Fittings

Description	Product Code
Gemini Tile	BUZ/7908/G501/--
Gemini Tile & Half	BUZ/7941/G508/--
Gemini LH 3/4 Tile	BUZ/7941/G5L3/--
Gemini RH 3/4 Tile	BUZ/7941/G5R3/--

Suitable Ridge/Hip Tiles

Description	Product Code
Ridge Half Round (450mm)	BUZ/7935/0516/--
Ridge Half Round Nailhole (450mm)	BUZ/7935/D516/--
Ridge Half Round Block End (450mm)	BUZ/7940/D524/--
Ridge Universal Angle (450mm)	BUZ/7935/U516/--
Ridge Universal Angle Nailhole (450mm)	BUZ/7935/UD16--
Ridge Uni Angle Block End (450mm)	BUZ/7940/U524/--
Ridge Half Round Mono (450mm)	BUZ/7940/0300/--
Ridge HR Mono Block End LH (450mm)	BUZ/7940/0324/--
Ridge HR Mono Block End RH (450mm)	BUZ/7940/0325/--
Ridge Scrolltop Half Round (450mm)	BUZ/7940/HR30/--
Ridge Scrolltop HR Block End (450mm)	BUZ/7940/HR29/--
Ridge Half Round Baby (300mm)	BUZ/7940/0020/--
Ridge Angle Baby (300mm)	BUZ/7940/0019/--
Hip Third Round (450mm)	BUZ/7935/0566/--
Hip Third Round Nailhole (450mm)	BUZ/7935/D566/--
Hip Third Round Block End (450mm)	BUZ/7940/D526/--
Hip Universal Angle (450mm)	BUZ/7935/U566/--
Hip Universal Angle Nailhole (450mm)	BUZ/7935/UD66/--
Hip Uni Angle Block End (450mm)	BUZ/7940/U526/--
Gemini Bonnet Hip	BUZ/7950/G513/--
Gemini Bonnet Hip Block End	BUZ/7940/G524/--

Ancillary Products

Description	Product Code
GM/MS Verge Pk LH (15 units)	BUZ/7951/G6VL/--
GM/MS Verge Pk RH (15 units)	BUZ/7951/G6VR/--
SL8/GM/MS Vented Ridge Pk (6m)	BUZ/7951/GMT5/--
Vented HR Monoridge Pk (6m)	BUZ/7951/G6M5/--
SL8/Gemini/Minislate Hip Pk (6m)	BUZ/7951/DH66/00
Gemini Air Vent Kit	BUZ/7955/M5IV/--
Gemini Soil Vent Kit (inc.flexipipe)	BUZ/7955/M5IS/--
Eaves Vent Starter Pk (6m)	BUZ/7955/U5E5/00
Eaves Vent Extension Pk (6m)	BUZ/7955/U5E7/00
Vented Abutment Pk (3m)	BUZ/7951/GIA3/--
Gemini Tile Clips (Pk 100)	BUZ/7951/G552/00
Gemini Verge Clips (Pk 50)	BUZ/7961/0053/00

Plain Tiles

Description	Product Code
Plain Tile	BUZ/7907/P501/--
Plain Tile & Half	BUZ/7945/P507/--
Plain Tile Eaves & Tops	BUZ/7945/P506/--
Beavertail Tile	BUZ/7930/BT01/--
Beavertail RH Tile & Half	BUZ/7945/BT08/--
Beavertail LH Tile & Half	BUZ/7945/BT07/--
Plain Tile Bonnet Hip	BUZ/7950/PT13/--
90 Deg LH Ext Angle	BUZ/7950/PT11/--
90 Deg RH Ext Angle	BUZ/7950/PT12/--
135 Deg LH Ext Angle	BUZ/7950/PT31/--
135 Deg RH Ext Angle	BUZ/7950/PT32/--

