

# FarBo® ParaDrain rainwater outlets

ParaDrain rainwater outlets for roof drainage systems

## Applications

- Rainwater outlets specifically designed for use in through-wall applications or parapets

## Key Features

- High quality 400mm or 600mm long spigot manufactured from stainless steel
- Factory bonded flange to match specific membrane material being used (material must be specified at time of order)
- Membrane attached to the outlet allows for easy installation
- Suitable for use in new build or refurbishment applications
- High performance wide outlets for increased flow rates

## Datasheet

Document Reference: DS-RDS-PARA-9.19/02

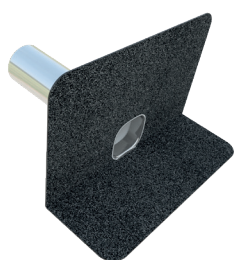
03 ROOF DRAINAGE SYSTEMS  
FarBo® ParaDrain rainwater  
outlets

# FarBo® ParaDrain rainwater outlets

## With 400mm spigot

Code	Flow Rate l/sec	Outlet drain (mm)	Aperture size (mm)	Membrane attachment	
				Type	Size (mm)
FO-PARAPET-50-SBS	0.32	50		Bituminous	500 x 500
FO-PARAPET-75-SBS	0.63	75		Bituminous	500 x 500
FO-PARAPET-110-SBS	1.06	110		Bituminous	500 x 500
FO-PARAPET-50-PVC LT GREY	0.32	50		Light grey PVC	350 x 350
FO-PARAPET-75-PVC LT GREY	0.63	75		Light grey PVC	350 x 350
FO-PARAPET-110-PVC LT GREY	1.06	110		Light grey PVC	350 x 350
FO-PARAPET-50-PVC DK GREY	0.32	50		Dark grey PVC	350 x 350
FO-PARAPET-75-PVC DK GREY	0.63	75		Dark grey PVC	350 x 350
FO-PARAPET-110-PVC DK GREY	1.06	110		Dark grey PVC	350 x 350
FO-PARAPET-SQ-200 PVC DK GY	1.85	n/a	205 x 103	Dark grey PVC	500 x 600
FO-PARAPET-SQ-200 PVC LT GY	1.85	n/a	205 x 103	Light grey PVC	500 x 600
FO-PARAPET-SQ-200 SBS	2.02	n/a	225 x 75	Bituminous	500 x 600

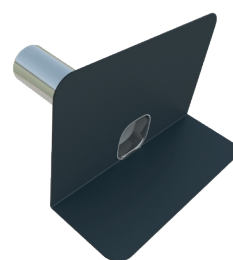
For TPO, EPDM or other non-standard membranes, please contact our customer service team on 0800 304 7616



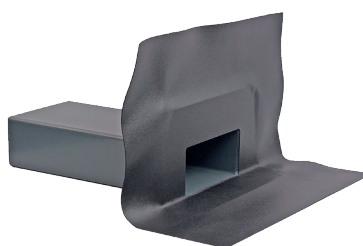
FO-PARAPET-SBS



FO-PARAPET-PVC LT GREY



FO-PARAPET-PVC DK GREY



FO-PARA-SQ-200-PVC-DK GREY



FO-PARA-SQ-200-SBS

# FarBo® ParaDrain rainwater outlets

## With 600mm spigot

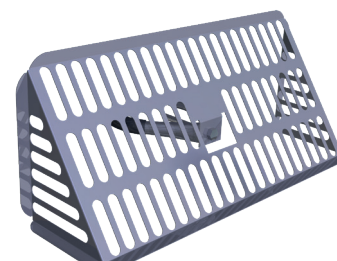
Code	Flow Rate l/sec	Outlet drain (mm)	To suit pipe size (mm) Where outlet is inserted into existing pipe in refurbishment situations	Membrane attachment	
				Type	Size (mm)
FO-PARAPET-50/600-SBS	0.32	50	50	Bituminous	500 x 500
FO-PARAPET-75/600-SBS	0.63	75	75	Bituminous	500 x 500
FO-PARAPET-110/600-SBS	1.06	110	110	Bituminous	500 x 500
FO-PARAPET-50/600-PVC LT GREY	0.32	50	50	Light grey PVC	350 x 350
FO-PARAPET-75/600-PVC LT GREY	0.63	75	75	Light grey PVC	350 x 350
FO-PARAPET-110/600-PVC LT GREY	1.06	110	110	Light grey PVC	350 x 350
FO-PARAPET-50/600-PVC DK GREY	0.32	50	50	Dark grey PVC	350 x 350
FO-PARAPET-75/600-PVC DK GREY	0.63	75	75	Dark grey PVC	350 x 350
FO-PARAPET-110/600-PVC DK GREY	1.06	110	110	Dark grey PVC	350 x 350

Outlet flow rates with leafguards are based on a water depth of 35mm above the invert level of the outlet as recommended by UK design standard BS EN 12056-3:2000. If required, greater flow rates can be achieved if the outlets are sumped - please request a rainwater calculation by our technical department

Leafguard for ParaDrain	Description
FO-PG	Stainless steel parapet leafguard prevents blocking of outlet by debris Securely clamps to inside of outlet stem, can only be removed with the correct tool. Suits all sizes of ParaDrain outlets
FO-PG-325	Extra large leaf guard for FO-PARA-SQ-200



FO-PG



FO-PG-325

FIXFAST Ltd | Merlin House | Seven Mile Lane | Borough Green | Sevenoaks | Kent | TN15 8QY  
T: 0800 304 7616 | F: 0845 450 7486 | E: info@fixfast.com | W: www.fixfast.com

Fixfast is a trading name of FIXFAST Ltd which is a company registered in England & Wales with number 09481218.  
The registered office is Fixfast, Merlin House, Seven Mile Lane, Borough Green, Sevenoaks, Kent, United Kingdom TN15 8QY



Certificate number 10905  
ISO 9001, ISO 14001  
OHSAS 18001