

em.tubeTM

TECHNICAL DATA SHEET | 31.08.21 | V 1.1

Bringing natural light to gloomy interiors is not a challenge with the highly adaptable em.tube.

Its innovative features allow light captured at roof level to be directed downwards to illuminate windowless internal spaces – lighter, brighter and exceptionally functional.

em.tube Range Options

Rigid tube system:

- Offers 98% reflection on inner surface
- Up to 20 times more light (2200 lux) than a 100w bulb (105 lux)*
- Suitable for longer tube lengths

Flexible tube system:

- Provides up to 14 times more light (1500 lux) than a 100w bulb (105 lux)*
- Suitable for shorter tube length
- Easier to install
- Most cost-effective option

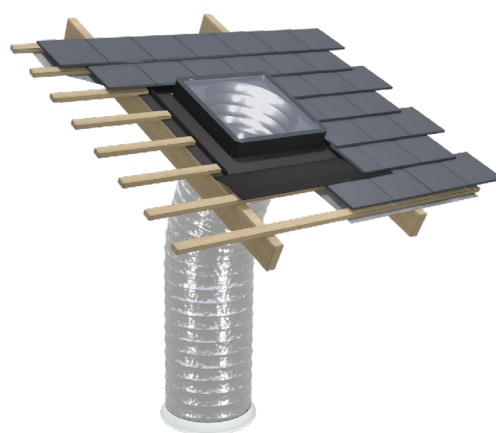
Flat roof kit:

- To suit builders or proprietary PVC upstand
- Incorporates polycarbonate dome

Pitched roof kits:

- Aesthetically-pleasing square flat glass unit
- 'Slate Roof' kit – for 8–16mm tile thickness
- 'Tile Roof' kit – for 14–32mm tile thickness

* - Tests carried out by Durham University, UK, actual performance will depend on exposure to available daylight such as geographic location, orientation of tube, length of tube, curvature of tube, time of year, time of day, diameter of tube, etc.

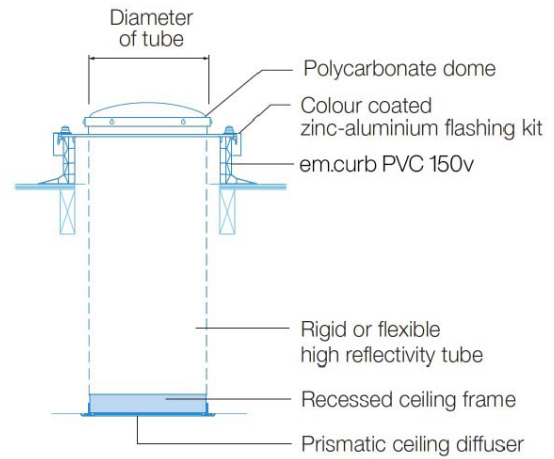


Features & Benefits

- An innovative and effective means of transmitting natural daylight to poorly lit areas
- Available in 'rigid' and 'flexible' tube systems
- Flat and pitched roof options available
- Inner surface up to 20 times more light than a 100w bulb
- 98% reflectivity on rigid tube system
- Minimal disturbance to roof and ceiling construction
- Comprehensive range of sizes and accessories available from stock
- Low profile polycarbonate UV resistant

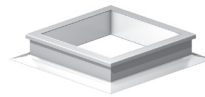


Product Diagram



Accessories

em.curb Upstand:



- Economical and effective alternative to builder's upstand curb
- Compatible with most flat roof finishes
- Extruded PVCu
- 150mm high

em.tube Fire Collar:



- Mounted above ceiling diffuser
- Protects against fire spread
- Certified up to 4 hours' fire protection

em.tube Security Collar:



- Intruder resistant grid

Size Range

Nominal Size ø	Space needed between joists/rafters (mm)	Features
350	345	Suitable for very small rooms – up to 2m x 2m for flexible tube system and 3m x 3m for rigid tube system. Fits between most conventional rafters/joists – eliminating the need for trimming work.
450	460	Suitable for rooms up to 3.5m x 3.5m for flexible tube system and 4.5m x 4.5m for rigid tube system.
550	540	Suitable for rooms up to 5m x 5m for flexible tube system and 6m x 6m for rigid tube system.

For larger areas, use multiple units of optimum permutation. Transmitted light varies due to position on roof and adjacent trees or buildings.