



em.glaze™

electric opening

TECHNICAL DATA SHEET | 01.11.21 | V 1.0

Offering a clean, minimalistic finish both inside and out, em.glaze electric opening comes with concealed hinges and no visible fixings internally or externally.

Technical Data

Glazing:

- Double-glazed as standard – triple glazed by special order
- Standard double-glazed glass specification:
 - 6mm Clear toughened outer
 - 16mm Argon filled warm edge spacer silicone bonded
 - 8.8mm laminated inner pane with PVB interlayer (11.5mm on larger units)
- Other glass specifications:
 - Refer to glass specification and performance chart for information relating to other specifications

Frame:

Rooflight frame is manufactured with fully thermally broken design and welded aluminium frame and cill detail. All visible aluminium is polyester powder coated.

Performance – Rooflight:

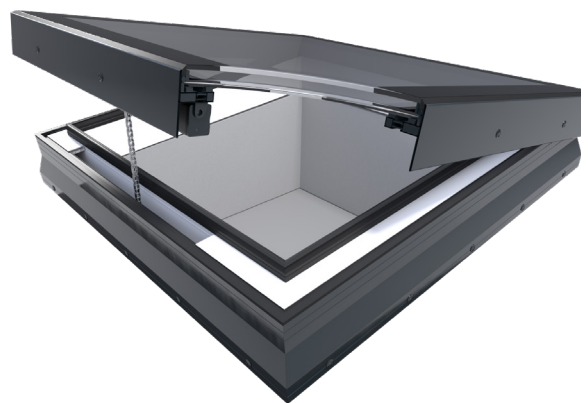
Refer to glass specification and performance chart and data related to relevant unit size.

Performance – Upstand:

Refer to em.curb data sheet.

Roof Pitch

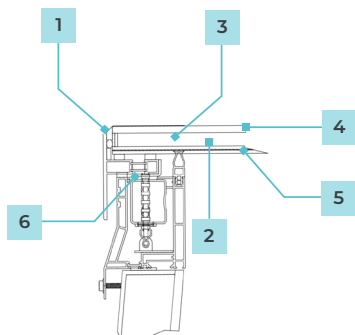
Recommended to be installed on roof slope 5-20°.



Features & Benefits

- Thermally broken profile
- Motor fully concealed within subframe when closed
- All units have motor leads protruding minimum 2m
- Water management channel within profile
- Single or tandem motors depending on unit size
- Unit fit to builders curb or uPVC em.curb
- Wiring concealed inside em.glaze frame
- Motor mounted chain down at standard, minimising water/moisture entry into motors
- Special motor bracket to em.glaze flat glass unit allows unit to be detached from inside in event of power failure
- Standard RAL 7016 externally and White RAL 9016 internally
- 15 sizes available from stock for delivery within 5 days

Product Diagram



1	Frame	Aluminium
2	Gas	Argon
3	Warm spacer	✓
4	Toughened outer pane	✓
5	Laminated inner pane	✓
6	Thermal break + box section	✓
	Install pitch (upstand)	5–20° recommended
	Standard frit width	84mm
	External frame colour	RAL 7016 anthracite grey or any standard RAL colour
	Ud-value *	1.23 W/m ² K
	Non-fragility	CWCT TN66/67 Class 1 (or 2 dependant on size)
	Airtight BS6375-1:2015 and BS EN 12207	Class 2 300 Pa
	Wind loads BS 6375-1:2015 and BS EN 12210	Class A3

* complete glass unit tested vertically

Testing & Certification

Requirement	Result	Classification
Air Tightness	Class 2 (300pa)	EN12207/ EN1026
Water Tightness	Pass (without penetration of water)	EN 1873
Impact Resistance	CWCT Class 1 (or 2 dependant on size)	–

Rooflight Performance

Building Regulations (E&W) Approved Document L compliant design to achieve low U-Values:

- **Ud-Values:** As low as 1.23 W/m²K
- **G-Values:** As low as 0.36
- **Light Transmission:** Up to 80%

Options & Accessories

Standard comfort controls:

- Option of retractive switch or comfort kit including a control panel, remote control and rain sensor

Premium comfort controls:

- Wireless controls which include open/close manual switch and internal and external temperature
- Wireless weather station which includes wind and rain sensor
- Option of handheld remote



Guarantee

Whitesales product factories guarantee quality systems implementation process and environmental management systems.

Cleaning & Maintenance

Any maintenance of rooflights must be carried out strictly in accordance with the relevant 'Health and Safety' regulations.

Glazing: em.glaze rooflights are 'Non-Fragile' but should not be trafficked. Wash and rinse glazing at intervals, to be determined by the owner. Use a solution of 5% mild soap of detergent cleaning solution sprayed on to wash the glazing surface. Follow immediately with clean water and promptly remove excess rinse water with a clean squeegee. DO NOT use abrasive cloth, sponges, cleaner or solvent acid-based solution on the glazing. Should stronger cleaning compounds be needed to remove stubborn stains, consult Whitesales for recommendations.

uPVC Curb: em.curbs are made of shock resistant uPVC which does not need any additional finish. The curbs are equipped with a self-adhesive protection film on the inside, which must be removed at first use. When cleaning the curb, only use non-abrasive and neutral cleaning products, you will keep the smooth inner aspect.

Electric motors: Must be installed by a qualified electrician. Test annually by an Approved Electrical Installations Testing Company. Physically check fixing brackets to ensure fixings are secure.

Note

We reserve the right to make technical changes. For more information on em.glaze and other Whitesales products, visit whitesales.co.uk.

Downloads

For installation instructions, CAD drawings, 3D BIM objects, please visit whitesales.co.uk.





Glass Performance

Key	Outer Pane	Cavity	Inner Pane	Total DGU Thickness	Light Transmission (LT)	Solar g Value	Shading Coefficient	Centre Pane Ug Value	Direct Airborne Sound Insulation	Glass Weight
	6mm T clear	16mm	44.2 pvb clear	30.8mm	80%	0.62	0.71	1.1 W/m ² K	37 Rw	36kg/m ²
	6mm T clear	16mm	44.2 pvb white mat	30.8mm	59%	0.59	0.68	1.1 W/m ² K	37 Rw	36kg/m ²
	6mm T solar 70/37	16mm	44.2 pvb clear	30.8mm	69%	0.37	0.43	1.0 W/m ² K	37 Rw	36kg/m ²
	6mm T clear	16mm	55.4 pvb clear	33.5mm	79%	0.62	0.71	1.1 W/m ² K	39 Rw	42kg/m ²
	6mm T clear	16mm	55.4 pvb white mat	33.5mm	59%	0.59	0.68	1.1 W/m ² K	39 Rw	42kg/m ²
	6mm T solar 70/37	16mm	55.4 pvb clear	33.5mm	68%	0.37	0.43	1.0 W/m ² K	39 Rw	42kg/m ²