

DryVerge and Rapid DryVerge systems

The first dry fix products launched following the publication of BS 8612, each comfortably achieving the code's requirements for durability, wind loading and rain resistance.

FEATURES

- Secure four point fixing system provides high resistance to vertical and horizontal wind loads for both verge tile and dry verge system
- Quick to install and can be laid at variable gauges to suit the minimum and maximum headlaps of the tiles
- Ambi-Dry Verge is adapted on site to fit either the left or right-hand verge
- Drip point and water channels in design avoid gable end staining
- The first dry fix verge designed specifically to meet the new BS 8612

COMPONENTS

Each DryVerge and Rapid DryVerge system contains:

- 18 Left-hand verge units (ABS or HIPS)
- 18 Right-hand verge units (ABS or HIPS)
- 36 Stainless steel screws

Gable End Packs will be required for each installation which include:

- 2 Eaves Closure Units (ABS or HIPS)
- 4 Stainless steel screws
- 1 Ridge Comb

Each Ambi-Dry Verge system contains:

- 10 Ambi-Dry verge units (PVC)
- 10 Stainless steel verge clips (Cambrian) or 10 Stainless steel screws (DuoPlain)

Eaves/Ridge Packs will be required for each installation which include:

- 1 Eaves Closure Unit (PVC)
- 1 Stainless steel eaves clip
- 1 Ridge Comb

In addition, Block-end Ridge Tiles or Ridge End Caps will be required at all ridge ends.

COLOUR CODES

DryVerge

Metric/15x9 & Slate 10 DryVerge & Gable End packs	Slate Grey Terracotta Brown Charcoal Grey Red (Metric/15x9 only)
DuoPlain DryVerge & Gable End pack	Terracotta Brown Charcoal Grey Red

Rapid DryVerge

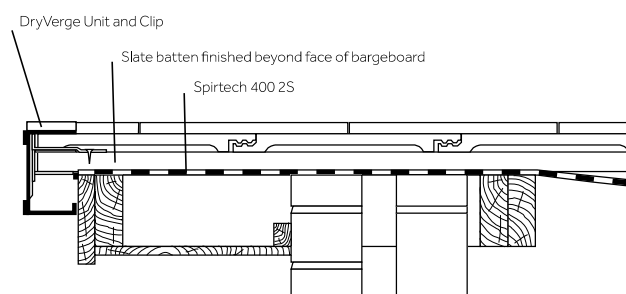
Metric/15x9 & Slate 10 DryVerge & Gable End packs	Slate Grey Rust Charcoal Grey
---	-------------------------------------

Ambi-DryVerge II

Cambrian & Eaves/Ridge Pack	Slate Grey
-----------------------------	------------



DRYVERGE SYSTEM WITH OVERHANG



COMPATIBILITY

MAXIMUM PITCHES*

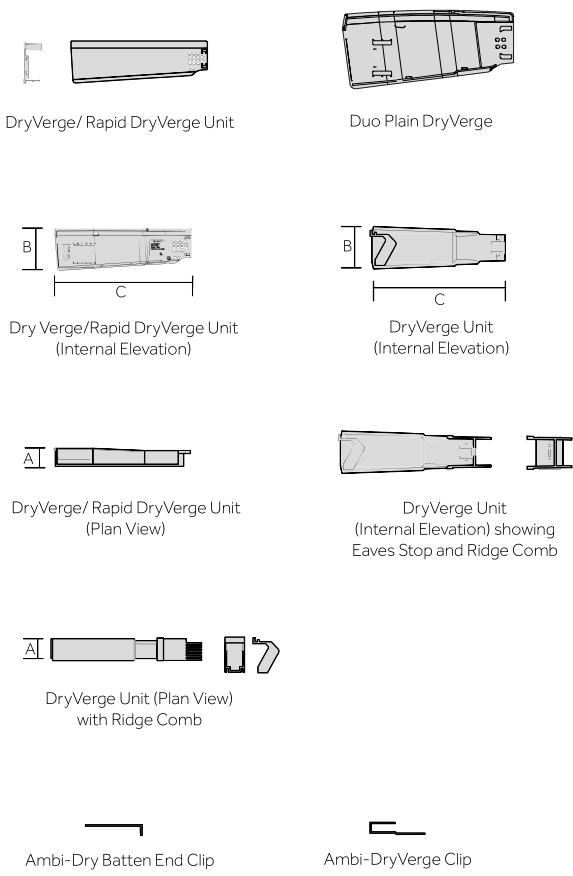
Tile / Slate	Duo-pitch Roofs	Mono-pitch Roofs
Cambrian Slate	60°	67.5°
Slate 10 range	50°	75°
Mini Stonewold (inc MockBond)	57.5°	72.5°
Grovebury	65°	75°
Regent	70°	70°
50 Double Roman	57.5°	72.5°
Renown	55°	75°
Fenland Pantile	55°	40°
Redland 49	35° †	65°
DuoPlain	60°	47.5°

* subject to fixing specification and fire resistance requirements above 69°.

† For pitches above 35° units require trimming at ridge apex

For greater pitches, please contact Technical Services on: +44 (0) 330 123 4585

DRYVERGE AND RAPID DRYVERGE SYSTEMS



PRODUCT CODES	Previous code	Code
Cambrian Ambi-Dry Verge II	948800	10002828
Cambrian Ambi-Dry Eaves/Ridge Pack	949100	10002829
Slate 10 DryVerge Slate Grey	939230	10003144
Slate 10 DryVerge Terracotta	939234	10003145
Slate 10 DryVerge Brown	939236	10003146
Slate 10 DryVerge Charcoal Grey	939277	20001189
Slate 10 DryVerge Gable End Pack Slate Grey	988230	10002872
Slate 10 DryVerge Gable End Pack Terracotta	988234	10002873
Slate 10 DryVerge Gable End Pack Brown	988236	10002874
Slate 10 DryVerge Gable End Pack Charcoal Grey	988277	10002875
Slate 10 Rapid DryVerge Slate Grey	939330	10002824
Slate 10 Rapid DryVerge Rust	939355	10002825
Slate 10 Rapid DryVerge Charcoal Grey	939377	10002826
Slate 10 Rapid DryVerge Gable End Pack Slate Grey	988330	10002876
Slate 10 Rapid DryVerge Gable End Pack Rust	988355	10002877
Slate 10 Rapid DryVerge Gable End Pack Charcoal Grey	988377	10002878
Metric/15x9 DryVerge Slate Grey	939030	10003217
Metric/15x9 DryVerge Terracotta	939034	10003121
Metric/15x9 DryVerge Brown	939036	10003122
Metric/15x9 DryVerge Charcoal Grey	939077	10003123
Metric/15x9 DryVerge Red	939078	10003247
Metric/15x9 DryVerge Gable End Pack Slate Grey	988030	10002863
Metric/15x9 DryVerge Gable End Pack Terracotta	988034	10002864
Metric/15x9 DryVerge Gable End Pack Brown	988036	10002865
Metric/15x9 DryVerge Gable End Pack Charcoal Grey	988077	10002866
Metric/15x9 DryVerge Gable End Pack Red	939078	10002867
Metric/15x9 Rapid DryVerge Slate Grey	939130	10002821
Metric/15x9 Rapid DryVerge Rust	939155	10002822
Metric/15x9 Rapid DryVerge Charcoal Grey	939177	10002823
Metric/15x9 Rapid DryVerge Gable End Pack Slate Grey	988130	10002869
Metric/15x9 Rapid DryVerge Gable End Pack Rust	988155	10002870
Metric/15x9 Rapid DryVerge Gable End Pack Charcoal Grey	988177	10002871
DuoPlain DryVerge Terracotta	991634	10002880
DuoPlain DryVerge Brown	991636	10002881
DuoPlain DryVerge Charcoal Grey	991677	10002882
DuoPlain DryVerge Red	991678	10002883
DuoPlain DryVerge Gable End Pack Terracotta	927334	10002805
DuoPlain DryVerge Gable End Pack Brown	927336	10002806
DuoPlain DryVerge Gable End Pack Charcoal Grey	927377	10002807
DuoPlain DryVerge Gable End Pack Red	927378	10002808

PRODUCT MEASUREMENTS (MM)

Profile	A	B	C
Cambrian Ambi-DryVerge II	60	85	305
DuoPlain DryVerge	53	115	240
Slate 10 DryVerge	52	127	413
Slate 10 Rapid DryVerge	52	127	413
Metric/15x9 DryVerge	52	154	413
Metric/15x9 Rapid DryVerge	52	154	413