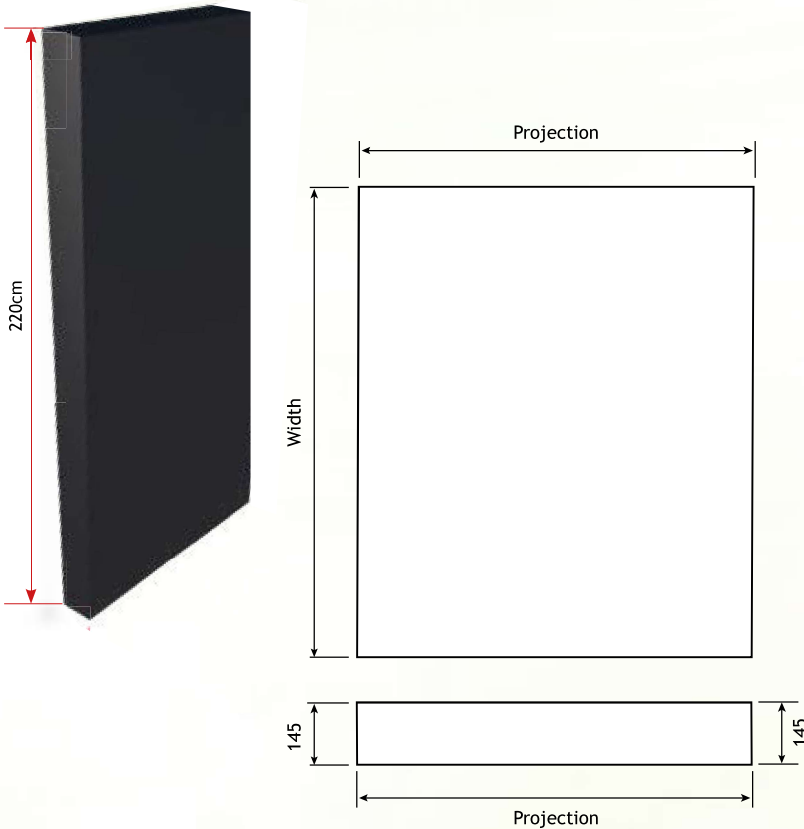
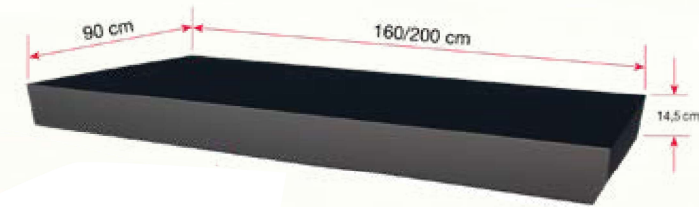


# BS150 Door Canopy

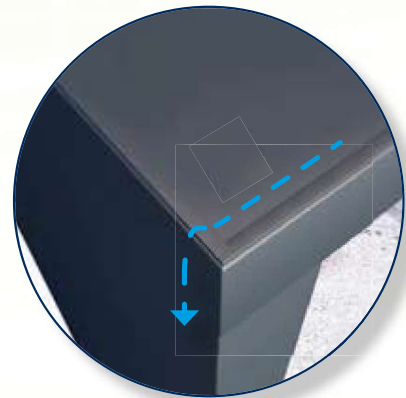
The Skyline BS150 Door Canopy incorporates a side panel for enhanced style and additional weather protection.

A continuous 145mm edge profile adds a strong and distinctive architectural feature to the building façade at points of entry. Available in widths of 1.6m and 2m, the BS150 range comprises right hand and left hand configurations. The Skyline BS150 Door Canopy is supplied with an integral LED light panel.

Available in Anthracite Grey



Lateral Drainage



Optional Built-in Mailbox



Width (mm)	Projection (mm)
1600	900
2000	900

### Bespoke

Where standard options are not suitable, we can design and manufacture bespoke solutions to client specification.



## BS150 Door Canopy Left

- Choose from 1.6m or 2m wide Door Canopy
- Large 2.2m x 900mm side shelter panel - left-hand
- Built-in central LED downlight
- Lateral drainage, the rainwater is directed down the edge of the side panel
- Bracketry and canopy fixings included (note that wall fixings are not supplied)
- Supplied in Anthracite Grey RAL7016m only

### Optional

- Special sizes available on request - please enquire
- Built-in mailbox options available

Width (mm)	Front Edge (mm)	Projection (mm)	Product Code
1600	145	900	BS150/16/SPLH
2000	145	900	BS150/20/SPLH

## BS150 Door Canopy Right

- Choose from 1.6m or 2m wide Door Canopy
- Large 2.2m x 900mm side shelter panel - right-hand
- Built-in central LED downlight
- Lateral drainage, drains rainwater down through the side panel to floor level
- Bracketry and canopy fixings included (note that wall fixings are not supplied)
- Supplied in Anthracite Grey RAL7016m only

### Optional

- Special sizes available on request - please enquire
- Built-in mailbox options available

Width (mm)	Front Edge (mm)	Projection (mm)	Product Code
1600	145	900	BS150/16/SPRH
2000	145	900	BS150/20/SPRH

