

# Breather Quilt

## 2 in 1 Breathable Multi-layer Insulation Blanket

Thermal insulation in a 40mm thin, flexible, multi-layer breathable membrane



- 2 in 1 insulating breather membrane
- Non degradable maintaining thermal performance and product integrity
- Ideal for new build & refurbishment
- Quick & easy to install
- Removes condensation
- Fully certified to industry standards
- UK Manufactured
- As used in the TyvaQuilt System

*Insulation for pitched roofs*

Technical Guide



**Multifoil-Insulation.com**

UK and European Distributors Specialising in  
Multifoil Insulation Solutions

# Insulation For Use In Roofs

## Benefits

- **2 in 1 insulating breather membrane**
- **Removes condensation**
- **Equivalent to 50mm of PIR Board**
- **LABC registered detail**
- **NHBC acceptance**
- **Agrément certified**

BreatherQuilt is a very flexible, easy to fit, breathable multi-layer insulation achieving a high thermal resistance.

## General fixing instructions

Installation of BreatherQuilt for pitched roof applications and additional insulation products should be in accordance with the manufacturer's certificate, fixing instructions and current good building practice.

Start at the bottom of the roof by rolling BreatherQuilt across the rafters and staple in to place. Tape a line of YBS double sided tape along the top edge of the material.

Install the next layer of BreatherQuilt over lapping the material by 100mm. Staple as before and ensure the double sided tape is secure and sealed.

Additional rolls should be butt jointed at the rafters, stapled as before and taped using waterproof tape.

BreatherQuilt can be cut using a craft knife or sharp pair of scissors. Staple at regular intervals (approx. every 300mm). Minimum 14mm stainless steel or galvanised staples are recommended.

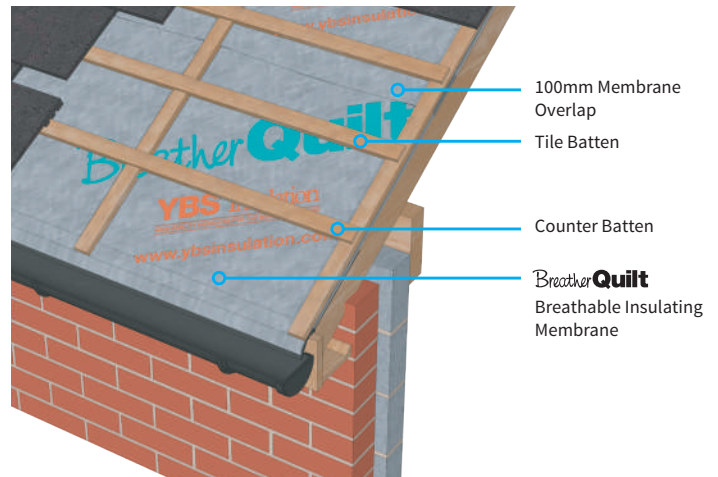
Horizontal jointing/taping - Overlap material by 100mm & tape using ThermaSeal Double Sided ape.

Vertical jointing/taping - Butt joint over a rafter & tape using YBS waterproof tape.

No personal protective equipment, clothing or handling required.



## Installation - Counter batten detail



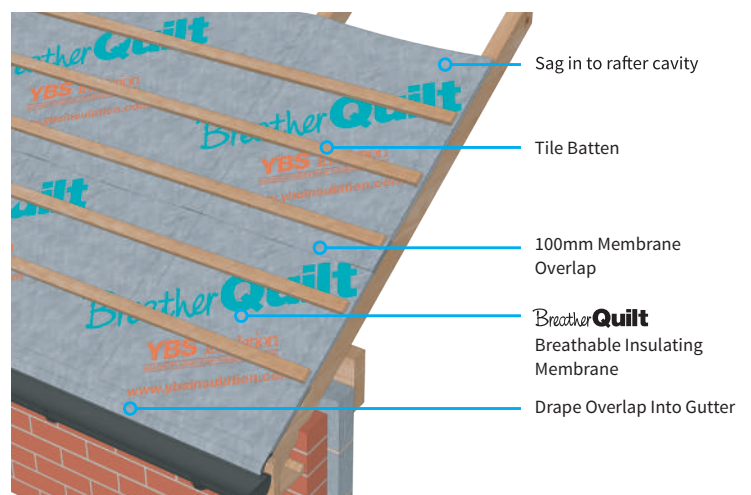
Starting at the bottom edge of the roof and working horizontally across the rafters, staple BreatherQuilt to the first rafter using minimum 14mm staples, pull taught and proceed across the roof.

At the eaves BreatherQuilt should extend onto a suitable eaves carrier.

Install 25mm battens parallel with the rafters.

Proceed with tile/slate battens and tile/slates.

## Installation - Draped detail without counter batten



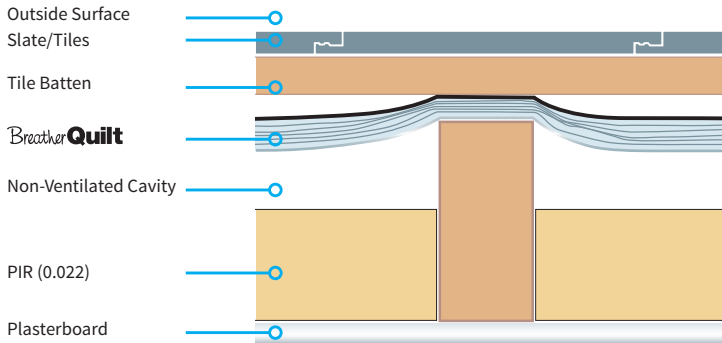
Starting at the bottom edge of the roof and working horizontally across the rafters, staple BreatherQuilt to the first rafter using minimum 14mm staples, BreatherQuilt should hang down between the rafters ensuring once tile battens are installed a clear 10mm drape is formed at the centre of all rafter spaces.

At the eaves BreatherQuilt should extend onto a suitable eaves carrier.

Proceed with tile/slate battens and tile/slates.

## New Build Pitch Roof 0.13

### Draped Detail



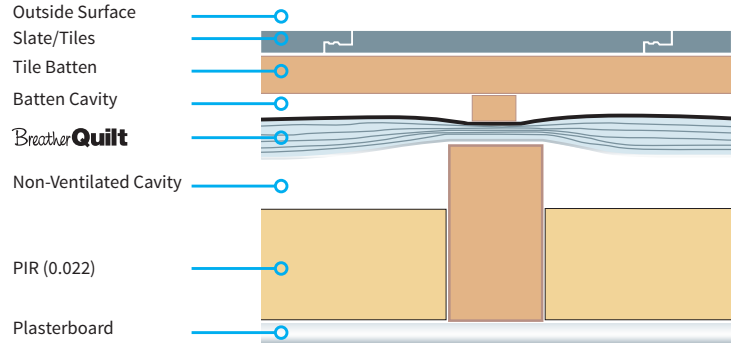
#### U-value Table

Description (rafters at 400 centres)	U-Value
BreatherQuilt and 175mm PIR	0.13 W/m <sup>2</sup> k

Description (rafters at 600 centres)	U-Value
BreatherQuilt and 155mm PIR	0.13 W/m <sup>2</sup> k

### Counter Batten Detail



#### U-value Table

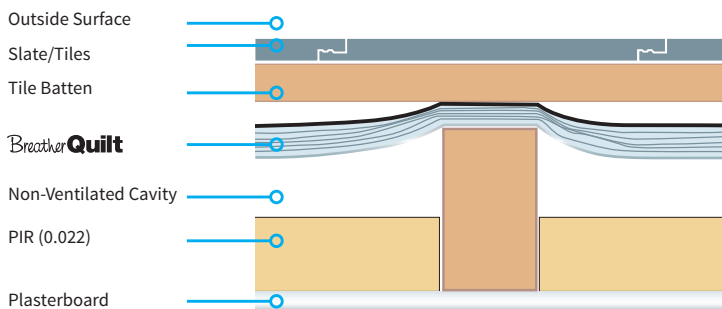
Description (rafters at 400 centres)	U-Value
BreatherQuilt and 180mm PIR	0.13 W/m <sup>2</sup> k

Description (rafters at 600 centres)	U-Value
BreatherQuilt and 160mm PIR	0.13 W/m <sup>2</sup> k

## Refurbishment Pitch Roof 0.18

### Draped Detail



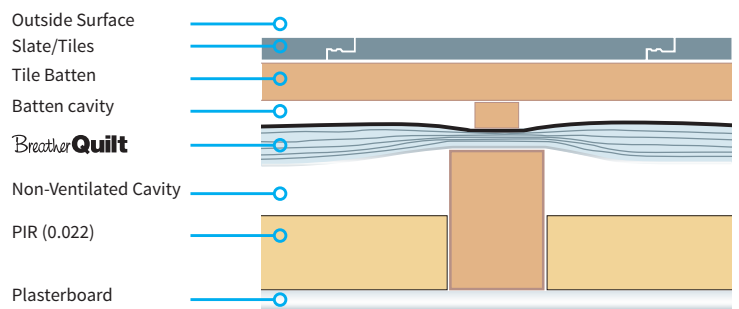
#### U-value Table

Description (rafters at 400 centres)	U-Value
BreatherQuilt	0.53 W/m <sup>2</sup> k
BreatherQuilt and 110mm PIR	0.18 W/m <sup>2</sup> k
BreatherQuilt and 165mm Mineral wool	0.18 W/m <sup>2</sup> k

Description (rafters at 600 centres)	U-Value
BreatherQuilt	0.53 W/m <sup>2</sup> k
BreatherQuilt and 95mm PIR	0.18 W/m <sup>2</sup> k
BreatherQuilt and 150mm Mineral wool	0.18 W/m <sup>2</sup> k

### Counter Batten Detail



#### U-value Table

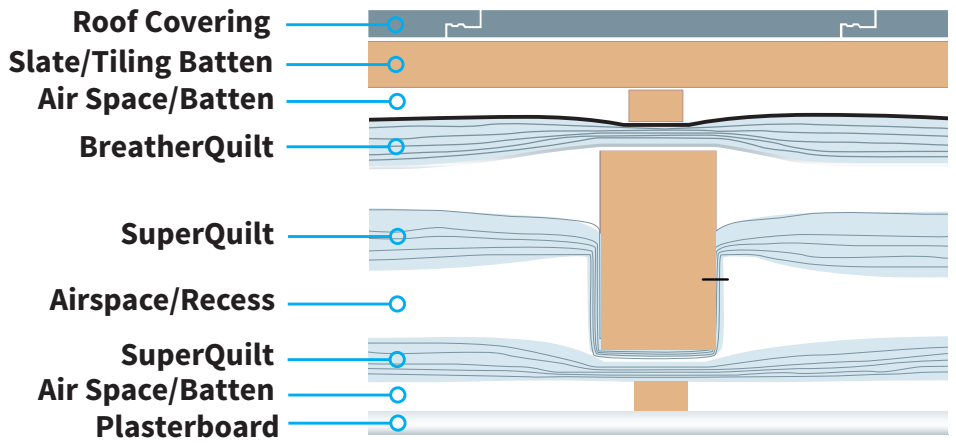
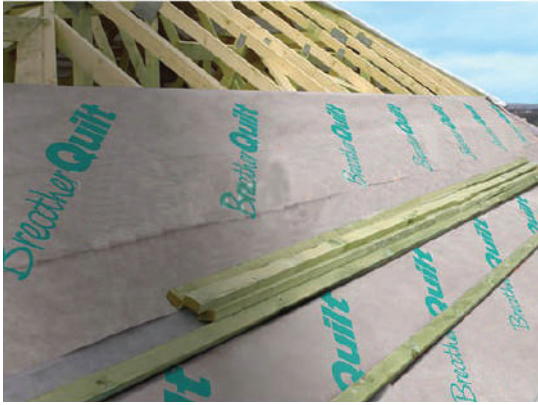
Description (rafters at 400 centres)	U-Value
BreatherQuilt	0.57 W/m <sup>2</sup> k
BreatherQuilt and 115mm PIR	0.18 W/m <sup>2</sup> k
BreatherQuilt and 165mm Mineral wool	0.18 W/m <sup>2</sup> k

Description (rafters at 600 centres)	U-Value
BreatherQuilt	0.56 W/m <sup>2</sup> k
BreatherQuilt and 100mm PIR	0.18 W/m <sup>2</sup> k
BreatherQuilt and 155mm Mineral wool	0.18 W/m <sup>2</sup> k

To Order BreatherQuilt or for anymore Information Visit [MultiFoil-Insulation.com](http://MultiFoil-Insulation.com)  
Or Call our dedicated team on 0114 323 0012

# Three Layer MultiFoil System



## Fitting Instructions:

BreatherQuilt is stapled directly to the external of the rafters with the reflective aluminium foil facing downwards. Start at the edge of the roof and work horizontally. Tape a line of ThermaSeal Double Sided tape along the top edge of the material. Install the next layer of BreatherQuilt using a 100mm overlap. Once the roof is fully covered install horizontal tile battens. If your rafters are 75mm or less you will need a vertical batten first.

From the internal of the rafters you can now install both layers of SuperQuilt. Recessing the first layer by stapling back into the rafters. Once stapled, fully tape and seal using True Aluminium ThermaSeal Foil Joining Tape.

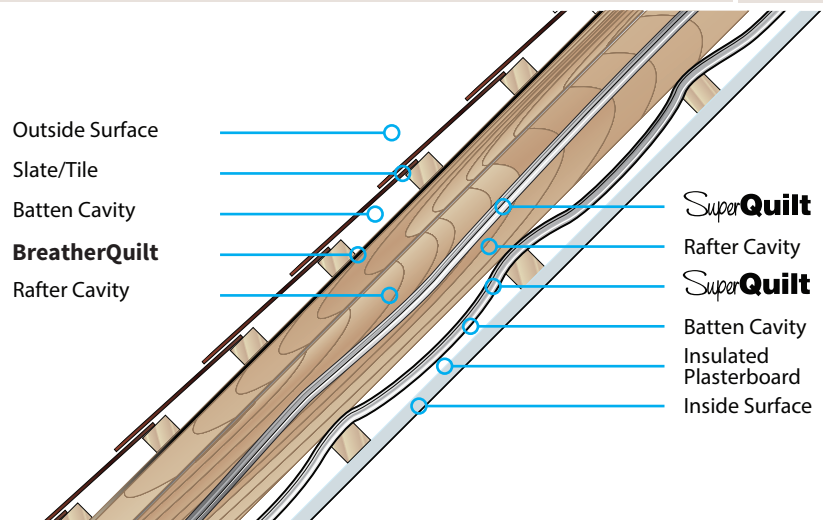
Once the first layer has been installed, staple a second layer of SuperQuilt directly through the first layer using 14mm staples. Pull this tight across the rafters so an airgap is present.

Fully tape and seal the second layer to ensure the product works as a high performing Vapour Control layer. You can now install 25mm battens before plasterboard finish.

**No Requirement for Rigid PIR Boards or Mineral Wool!**  
**Can be installed in little as 75mm Rafters!**

**Free Next Working Day Delivery on orders over £100+Vat**

U-Value Combined Method (W/m <sup>2</sup> K)			0.18
	Thickness (mm)	Conductivity (W/m <sup>2</sup> K)	Resistance (m <sup>2</sup> K/W)
Outside Surface	-	-	0.040
Slate/Tile	10.00		
Batten Cavity	25.00		
BreatherQuilt	10.00	1.00	1.100
Rafter Cavity	25.00		0.490
SuperQuilt	14.00		1.520
Rafter Cavity	38.00		0.490
SuperQuilt	14.00		1.520
Batten Cavity	25.00		0.490
Plasterboard	12.50	0.190	0.066
Inside Surface			0.100
<b>Total Resistance</b>			<b>5.784</b>



Calculated to include timber bridging

**To Order BreatherQuilt or for anymore Information Visit [MultiFoil-Insulation.com](http://MultiFoil-Insulation.com)  
 Or Call our dedicated team on 0114 323 0012**

# Breather Quilt



## Technical Properties

Technical Properties		
<b>Product Description</b>		
11 Components		
Thickness	40mm approx.	
Weight	700g/m <sup>2</sup>	
<b>Mechanical Properties</b>	Value	Reference Standard
Thermal performance		
Core	1.17m <sup>2</sup> K/W	EN 16012
Core + 1 Airspaces	1.62m <sup>2</sup> K/W	EN 6946
Emission coefficients of surfaces	0.05	EN 16012
Tensile strength	132KPA	BS EN 1608
Fire Classification	Euro Class E	EN 13501-1
Water vapour resistance	0.15 MNsg	
<b>Packaging</b>	12m <sup>2</sup>	
Width	1.2m	
Length	10m	
Weight	8.5Kg	

**Multifoil-Insulation.com**

UK and European Distributors Specialising in  
Multifoil Insulation Solutions

*Try our Free and Easy to Use Online U-Value Calculator!*

**Free Next Working Day Delivery on orders over £100+Vat!**

Tel: 0114 323 0012 Email: [sales@multifoil-insulation.com](mailto:sales@multifoil-insulation.com)