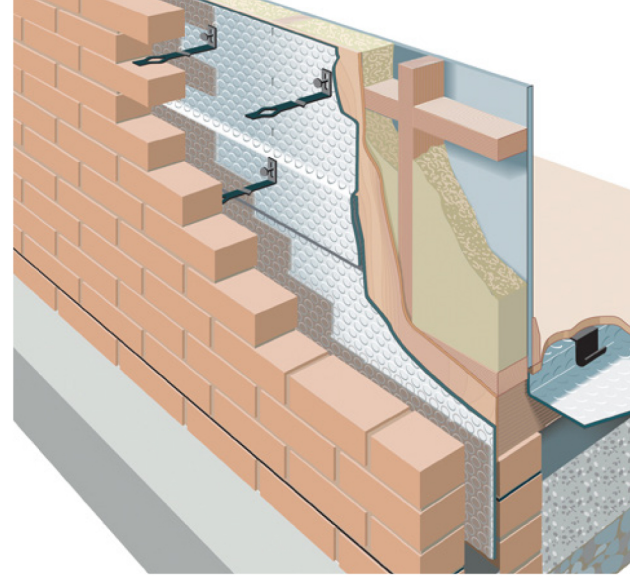


Breather-Foil^{FR}



INSULATING ALUMINIUM FOIL REFLECTIVE VENTING MEMBRANE.

Specifically designed for timber frame and modular building applications.

- Dual purpose 2-in-1 insulating and breathable venting membrane.
- Effectively reflects heat back out of the room, whilst allowing moisture to pass through.
- Quick and easy to install.
- Excellent tensile and tear resistance strength.
- 2 layer build-up & only 4mm thick.
- Equivalent to 30mm of polystyrene.
- Can reduce the depth of a timber frame from 140mm to 89mm.
- Zero fibres removes the need for PPE.
- Fully certified to industry standards.
- UV stable and weather resistant.

Breather-Foil^{FR}

The worlds first alternative breathable venting membrane, replacing traditional non woven breathable membranes. Our patented design has been specially developed for use in timber-frame and modular building constructions.

When installed into an unventilated cavity BreatherFoil FR effectively blocks infra red radiation, inhancing the thermal performance of timber frame wall and increasing the overall U-value.

Whether pre-fabricated or assembled on site, BreatherFoil FR can afford the designer and contractor maximum flexibility when detailing timber-frame walls, without the expense of thicker timber frames or higher priced materials.



No Condensation

Eliminates condensation, allowing moisture to pass through the membrane.



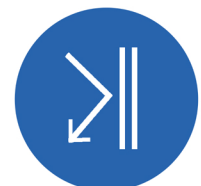
High Thermal Value

R-Value of (0.786 m²K/W)
Equivalent to 30mm of EPS insulation.



Quick & Easy

Flexible and easy to install, saving you time.



Reduces Cold Bridging

Air rated bubble core, reduces the transmission of cold bridging.

Require further technical advice or a bespoke U-Value Calculation?
Email us at technical@superquilt-insulation.co.uk

SuperQuilt
SuperQuilt-Insulation.co.uk

Breather-Foil^{FR}

Fully tested and accredited to industry standards, giving peace of mind to specifiers and installers alike.

Our certification includes:



How Breather-Foil FR Works

Breather-Foil FR is only 4mm thick and comprises of 2 layers, manufactured at our UK factory, using high quality performing raw materials.



Breather-Foil^{FR}



The core of the product is a bubble structure, formed using LDPE which contains an FR additive. Each pocket of air offers high thermal performance and reduces the risk of cold bridging.

The external layer is manufactured using highly reflective insulation grade aluminium foil, the surface of which is coated with a protective lacquer, preventing corrosion and loss of performance.

Our patented design effectively allows timber frame constructions to breathe through the unique overlapping and venting method. Breather-Foil FR gives you a breathable and a high thermal efficient product with an overall thermal resistance value of 0.786 (m²K/W), equivalent to approximately 30mm EPS (expanded polystyrene) insulation.

It has been proven in use for many years within the timber frame construction industry, providing weather protection and high thermal performance.

Performance attributes.

MECHANICAL PROPERTIES		
Thermal Performance	Value	Standard
Core	0.121m ² K/W	BS EN 16012
Core + 1 Airspaces	0.786m ² K/W	BS EN 6946
Flammability	Class E	BS EN 13501-1
Water Vapour Resistance	0.40 MNs/g	BS EN 12572
Emission Coefficients of surfaces	0.05	BS EN 16012
Nail Tear Resistance	70N	BS EN 12310-1

PRODUCT DETAILS	
Layers	2
Thickness (mm)	4
Weight (g/m ²)	183
Roll Width (mm)	1350
Roll Length (m)	25 / 50
Roll Area (m ²)	33.75 / 67.5
Roll Weight (Kg)	6.5 / 12.5

Require further technical advice or a bespoke U-Value Calculation?
Email us at technical@superquilt-insulation.co.uk

