

**BREWER
COWLS**

Brewer Aerodyne Sleeve model

Fitting instructions

**IMPORTANT: THE AERODYNE IS FOR SOLID
FUEL USE ONLY**

- Fits 150-240mm (6 - 9½ ") internal pot sizes
- Suitable for live or unused chimneys
- Stops downdraught fast
- Economical
- Other models available
- Available painted (terracotta, buff or black) or unpainted finish
- Simple, fast and secure fitting
- Can be fitted with an optional Birdguard mesh

About the Brewer Aerodyne cowl

Guaranteed

The Brewer Aerodyne cowl is guaranteed – satisfaction or your money back.

Efficiency

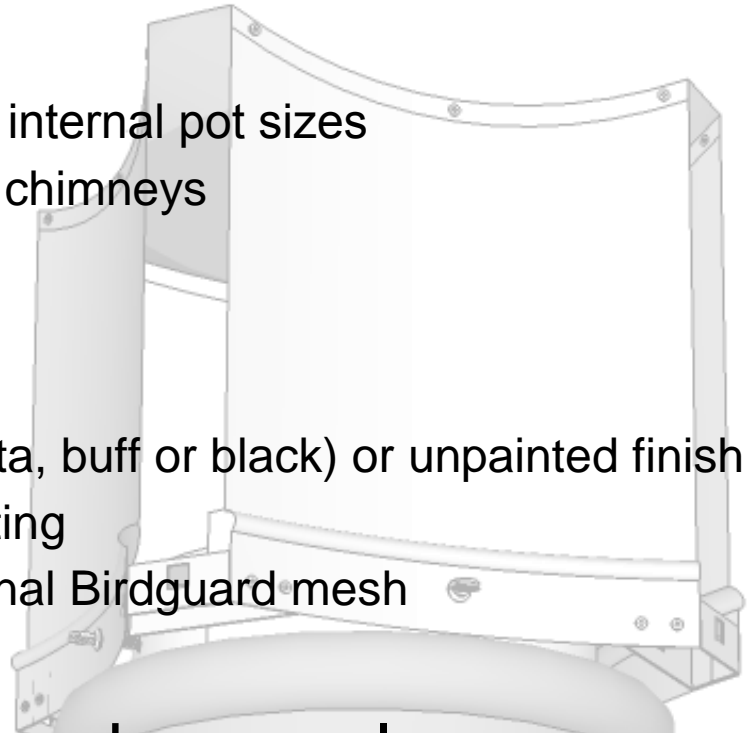
The Brewer Aerodyne cowl offers a high level of efficiency through its unique aerodynamic design, whatever the wind direction.

Construction

The construction of the Brewer Aerodyne cowl utilises a riveted, hardened aluminium alloy.

Benefits of a Brewer Aerodyne

Years of proven effectiveness at eliminating downdraught on most appliances burning solid fuel.



IMPORTANT: THE AERODYNE IS FOR SOLID FUEL USE ONLY

Ensure you have the correct model of terminal to match your application.

To fit the Aerodyne:

1. Assemble the Aerodyne sleeve panels by slotting them together (Figs 1, 2&3)
Ensure all the captive nuts are downwards.
2. With the Aerodyne upside down, position the assembled sleeve panels into the Aerodyne with the captive nuts downwards. Pass the thumb screws through the holes in the side panels and screw them into the captive nuts in the sleeve assembly. Make sure the thumb screws just pass into the inside area of the sleeve assembly. It may be necessary to slide the sleeve panels around to line the thumb screws up. (Fig4)
3. Make sure the thumb screw heads are touching the side panels by squeezing the sleeve panels together (Fig 4).
4. Lower and centralise the Aerodyne onto the chimney (Figs 5&6)
5. Alternately tighten the thumb screws in equal amounts until the Aerodyne is securely fixed in place.

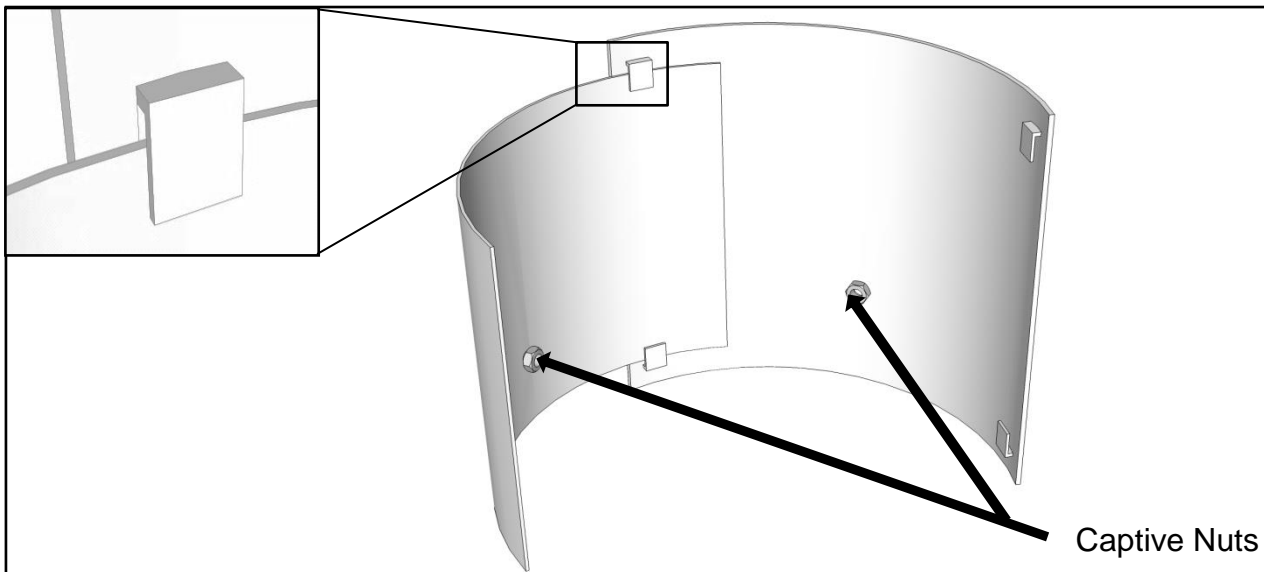


Fig1

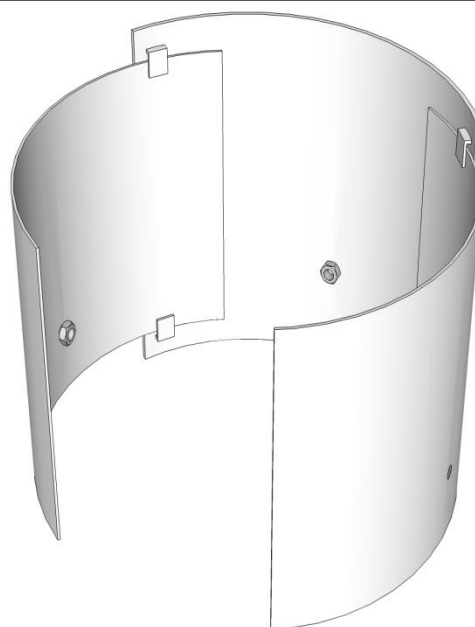


Fig2

Fig3



Fig4

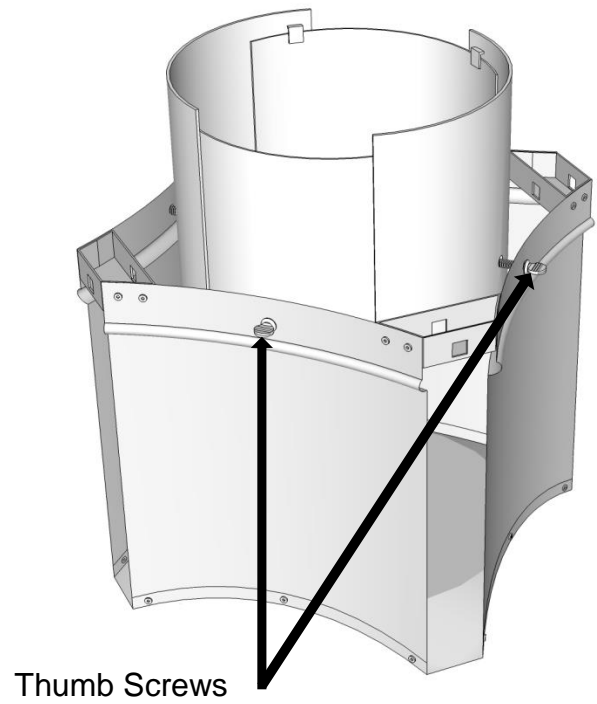


Fig5

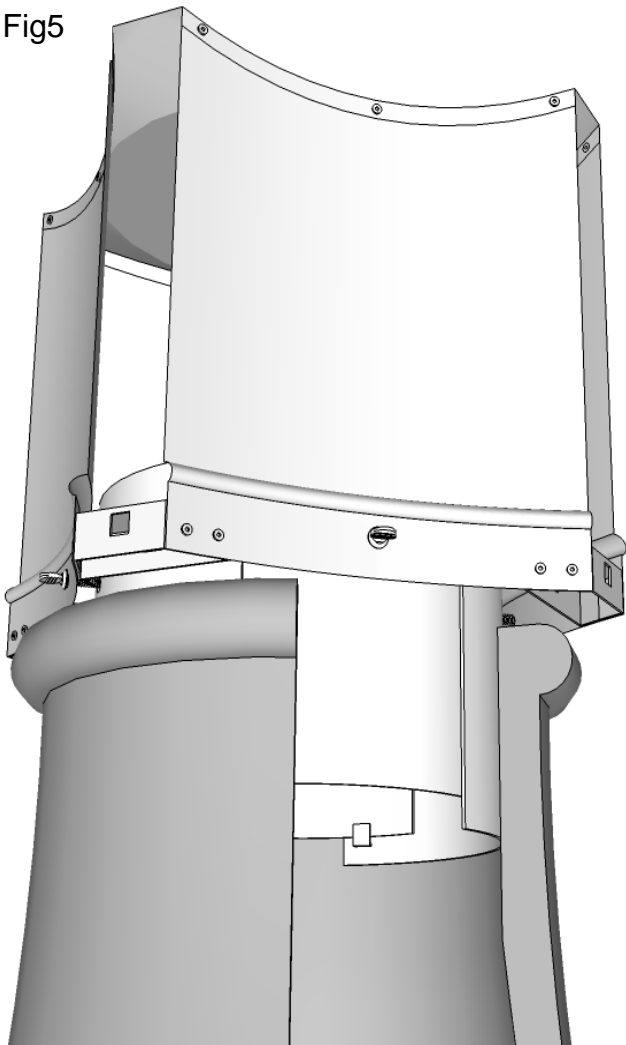
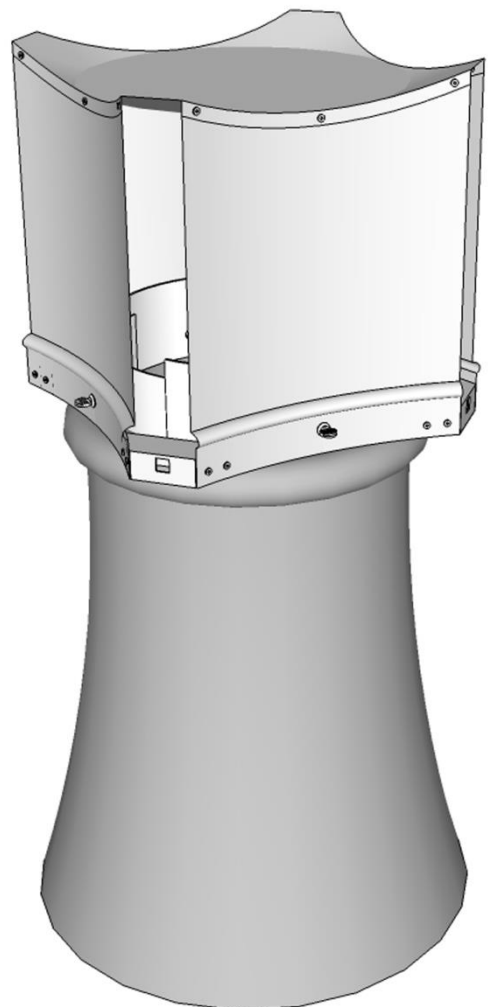


Fig6



Declaration of conformity

Brewer Metalcraft Ltd Units C&D Ford Lane Industrial Estate Ford (Near Arundel) West Sussex BN18 0DF United Kingdom	
13	
1856-1:2009 Chimneys - Requirements for metal chimneys - Part 1: System chimney products	
Metal system chimney fitting - Terminal	
Essential Characteristic	Performance
Flow resistance Coefficient	ζ 0.016
Durability: Freeze thaw	Pass

Technical information

Model	Aerodyne
Fitting range (internal chimney diameter)	150-240mm
Coefficient of flow resistance	ζ 0.016

