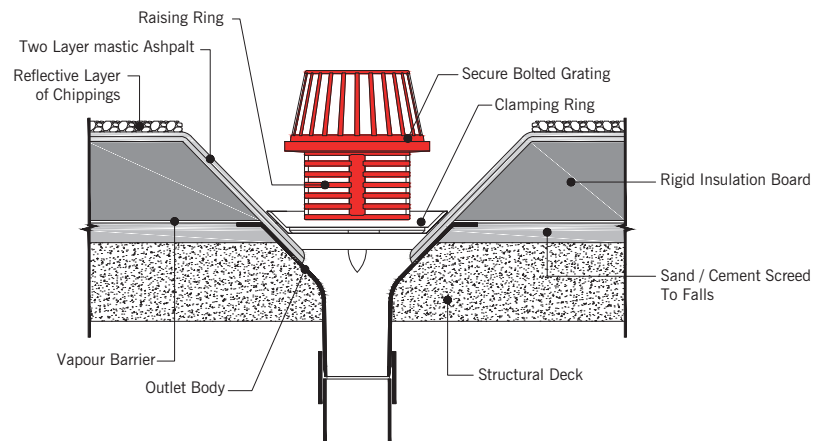


Typical Flat Roof Construction Details

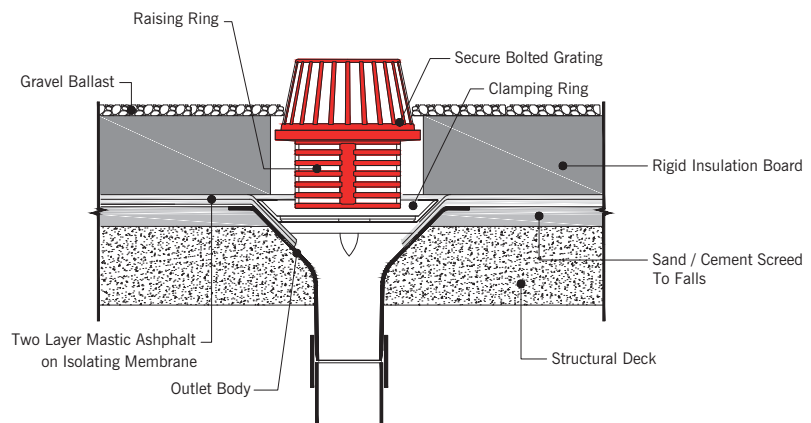
Warm Roof

A warm roof is where the main mass of the roof structure lies below the main thermal insulation. The waterproof membrane is positioned above the insulation.



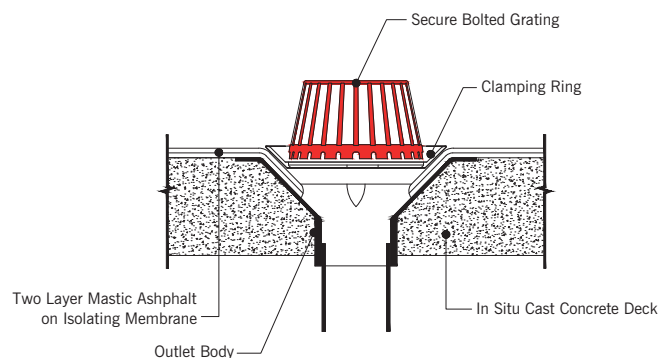
Inverted Roof

An inverted roof is a form of warm roof where the main mass of the roof structure lies below the main thermal insulation, however, the waterproof membrane lies beneath the thermal insulation.



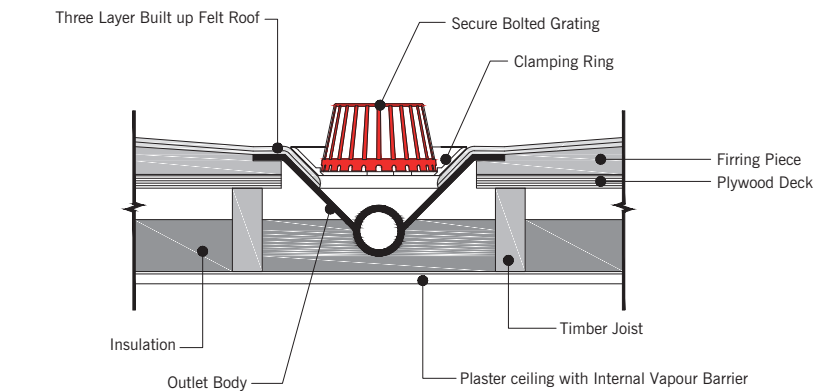
Un-insulated Roof

A roof without thermal insulation. This type of construction is only permitted in non-habitable buildings, e.g. garages.

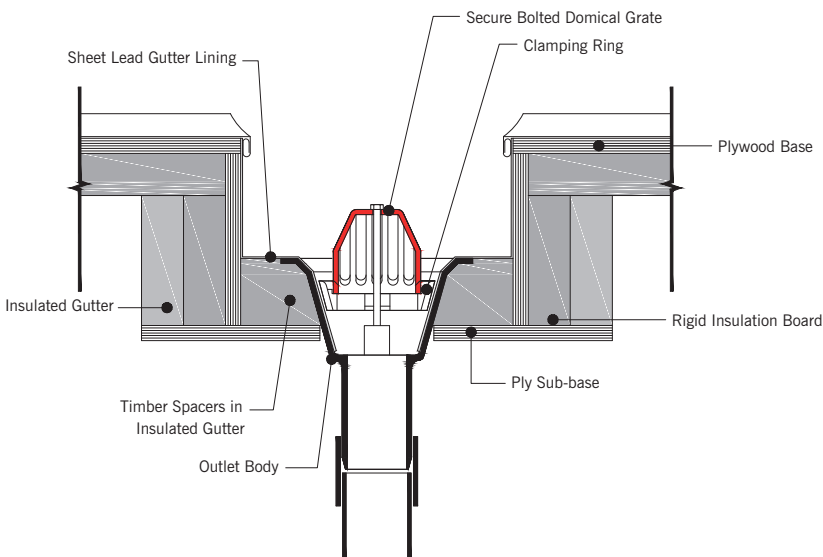


Typical Installation Guide & Construction Detail

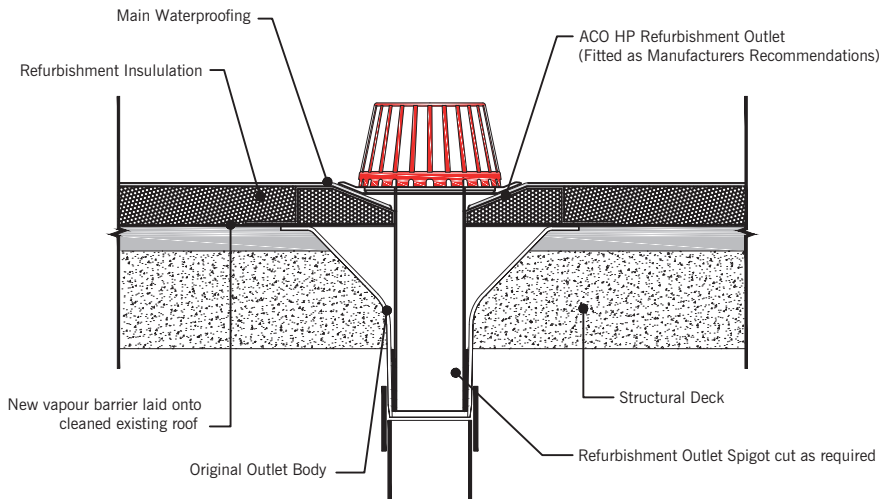
HP 90° outlet



Gully outlet

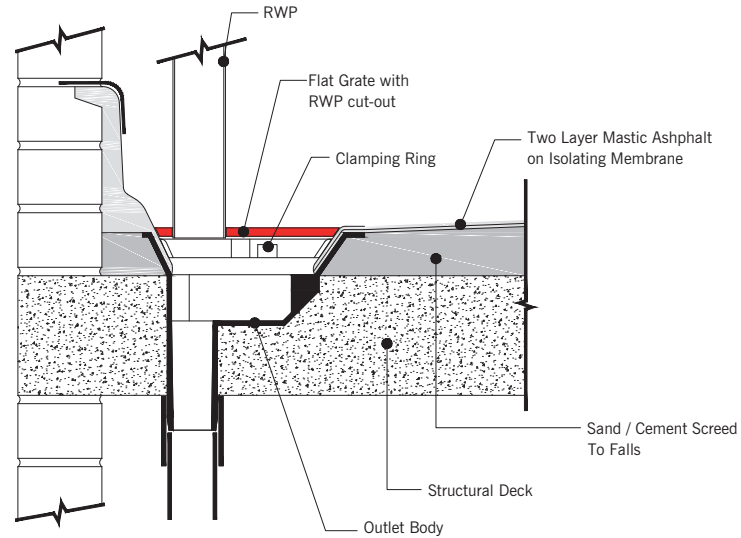


Refurbishment outlet

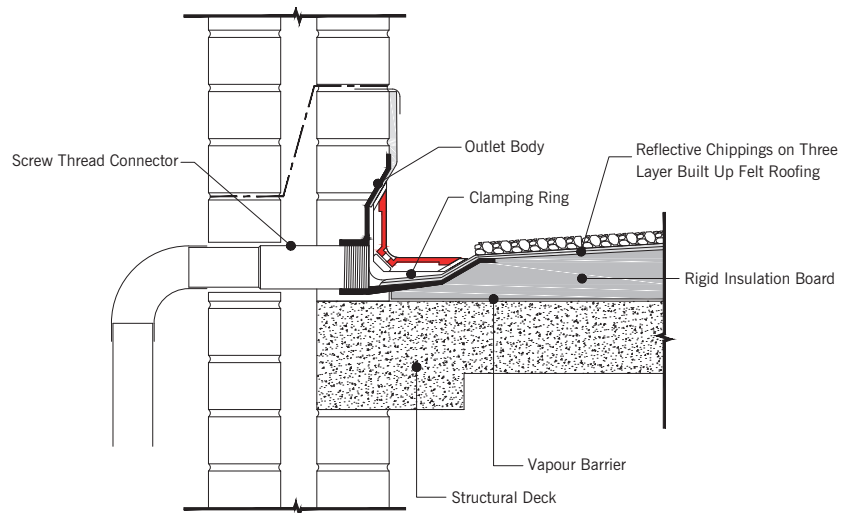


Typical Installation Guide & Construction Detail

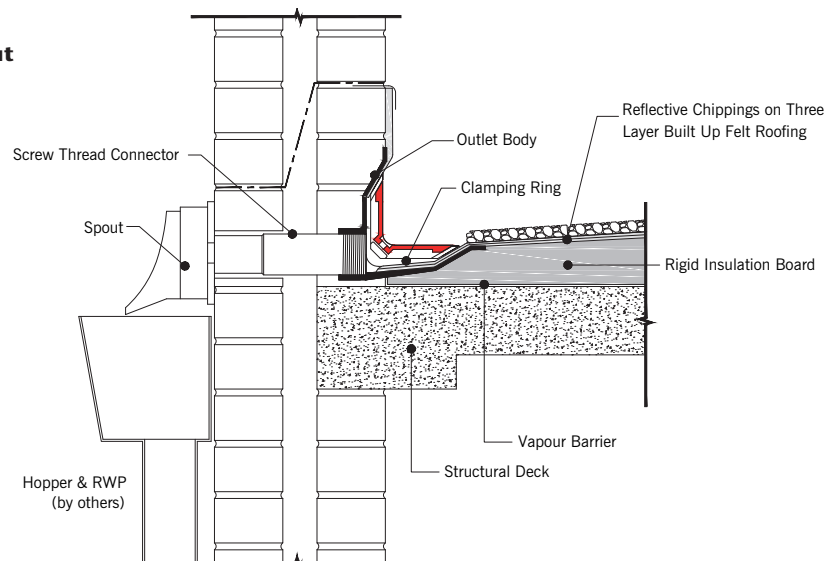
Balcony outlet with downpipe



Two-way outlet

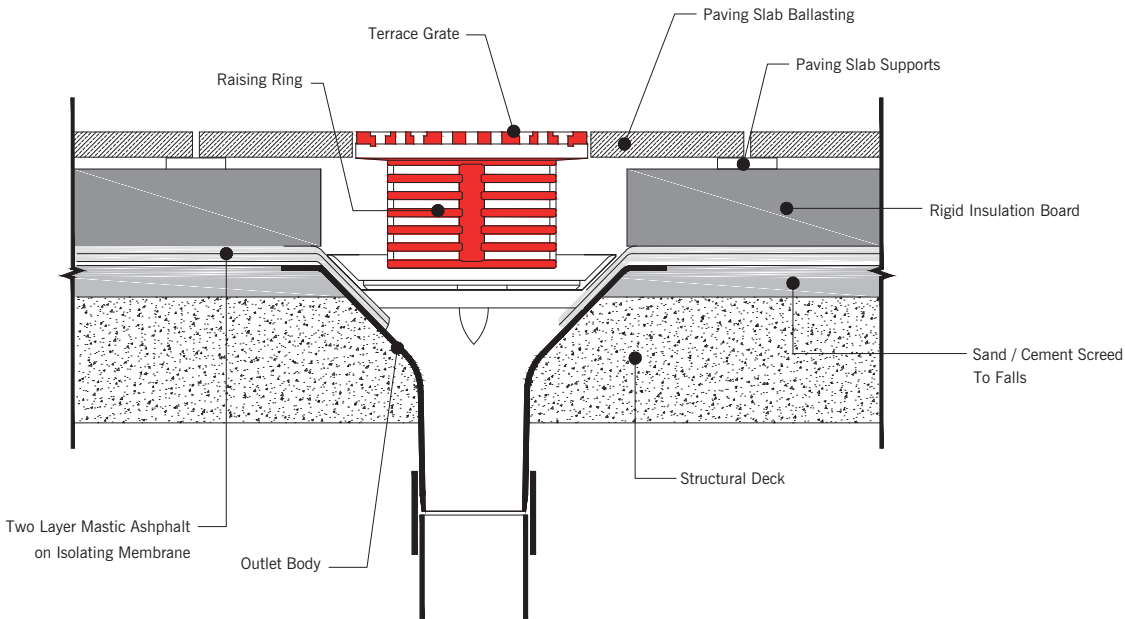


Two-way outlet with spout

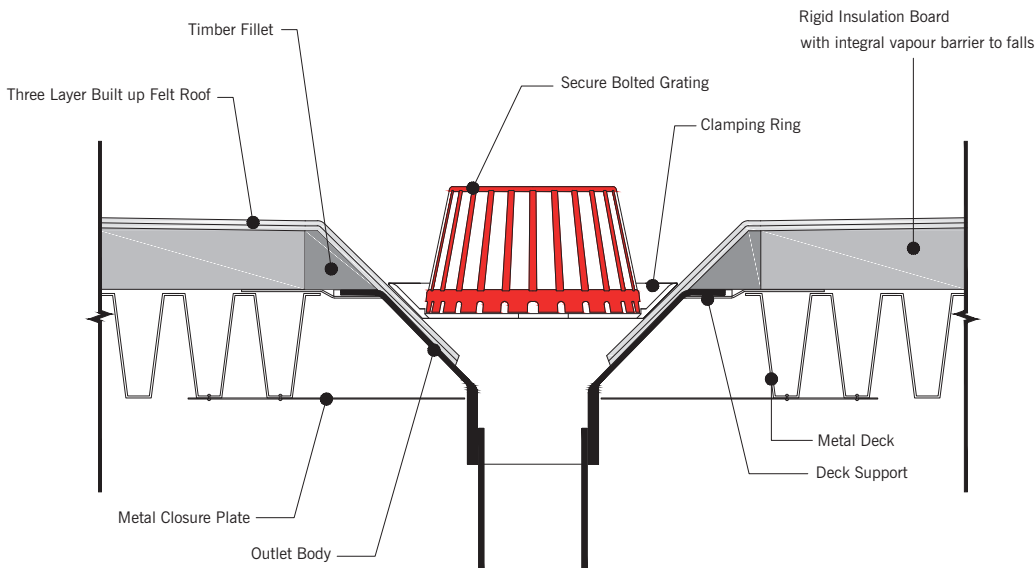


Typical Installation Guide & Construction Detail

Terrace grate



Metal deck support

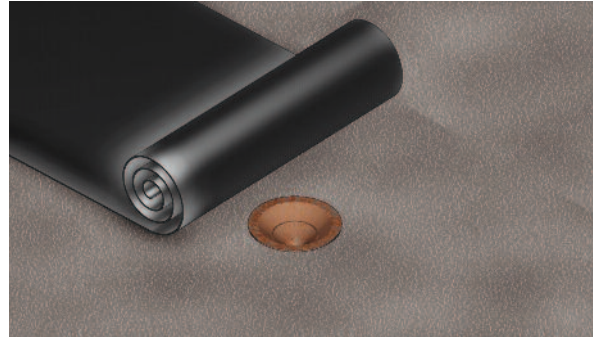


Refurbishment Outlet installation Guide



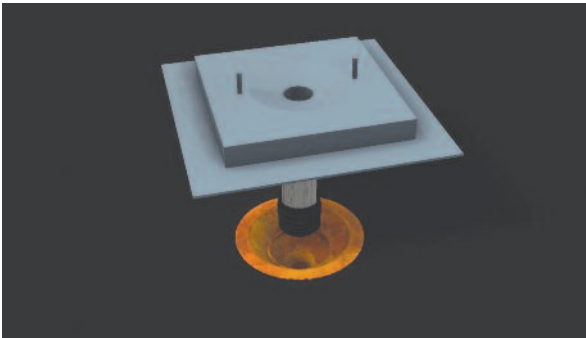
Step 1

Remove redundant roofing materials; brush & clean surfaces ready for new installation.



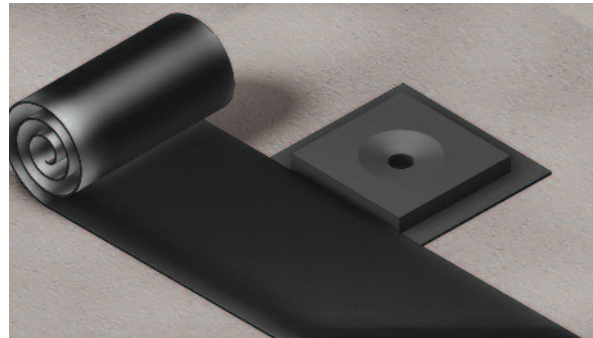
Step 2

Lay new vapour barrier & bond into existing rainwater outlet.



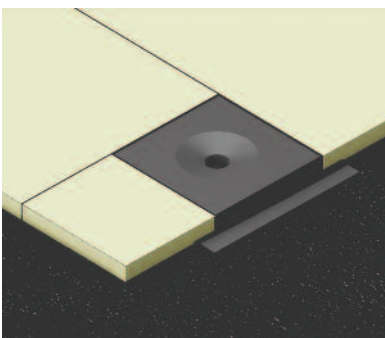
Step 3

With the finned rubber seal **removed**, insert the ACO Refurbishment Outlet into the sump of the existing rainwater outlet body. If necessary, reduce the spigot length of the new outlet to allow full insertion. Replace rubber seal and re-insert.



Step 4

Bond strips of vapour barrier to the Refurbishment Outlet flanges and existing vapour barrier to ensure a total seal.



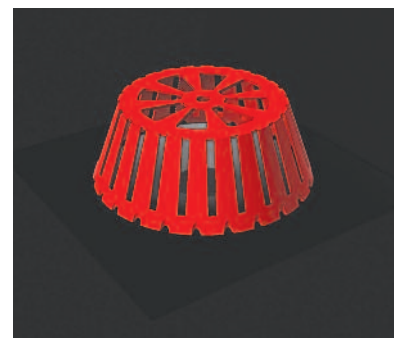
Step 5

Cut and lay insulation board around refurbishment outlet. If insulation is greater than 50mm thick, chamfer board so that outlet is at same level as the outlet top surface.



Step 6

Lay main waterproofing material over entire area and trim into the sump of the refurbishment outlet, ensuring the spigot outlet is clear of waterproofing material.



Step 7

With the waterproofing material still pliable, install clamping ring and tighten nuts evenly. Fit the grating to complete the installation.