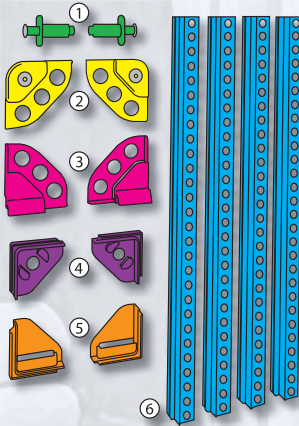


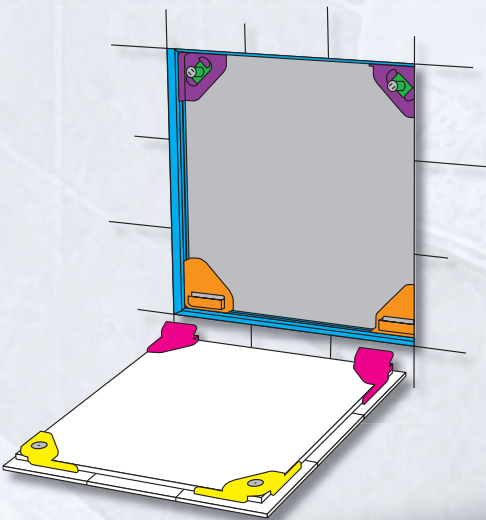


**Variable Dimensions:**  
Minimum 150mm x 150mm - Maximum 465mm x 465mm



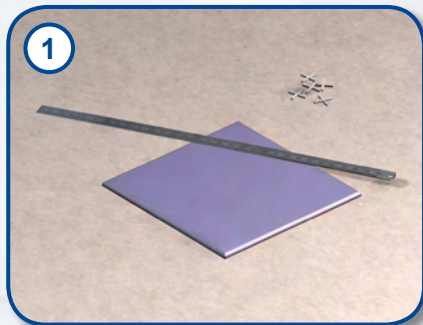
**Kit Includes:**

- ① 2 Magnetic Touch Latches
- ② 2 Clip-on Corners with Contact Plates
- ③ 2 Clip-on Corner Hinges
- ④ 2 Corner Supports for Magnets
- ⑤ 2 Corner Supports for Hinges
- ⑥ 4 Lengths of Frame Beading
- 1 Tile Backing Board



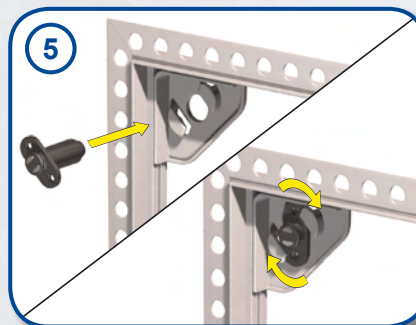


# Fitting Instructions

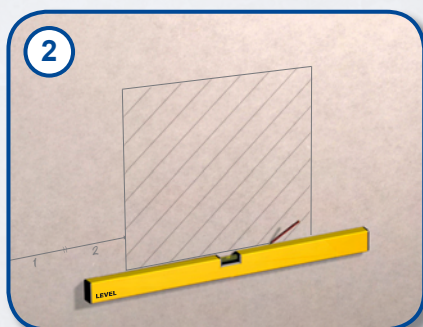


1 Calculate the size of the opening intended for your access panel by measuring your tiles and adding the widths of the surrounding grout joints.

Example:  
 Tile size = 150mm x 200mm  
 Panel size = 3 Tiles x 2 Tiles  
 Grout spacing = 2mm  
 Opening = 458mm x 406mm

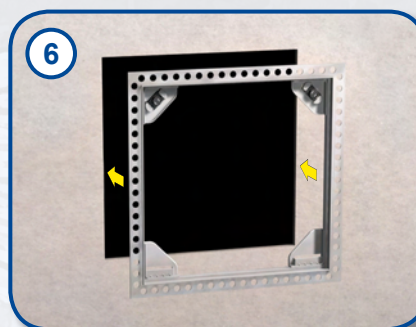


5 Assemble both magnetic touch latches to the frame by inserting them into corner parts 1 and 2 as shown and then twisting 90° clockwise until both latches “click” into place.

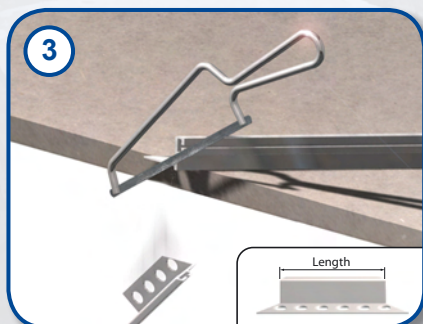


2 Mark out the opening, making sure it is square and level with a spirit level. (It may be worth calculating the distance of the opening from the outer edge of the wall and floor to avoid the need for cutting tiles when you come to tiling the perimeter of the wall).

Cut out the opening using a suitable knife or saw.

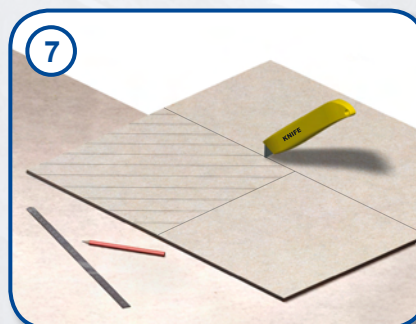


6 Push the assembled frame firmly into the wall opening so that the perforated flange sits tightly against the wall.



3 Saw four lengths of extrusion at 45° using a mitre saw or suitable hand saw to form a frame, equal in size to your opening.

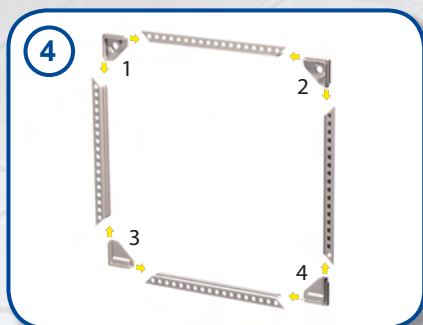
Note: measure and saw on the outside face of the frame as shown, NOT the perforated flange.



7 Mark out the backing board panel 25mm smaller (in both height and width) than the wall opening.

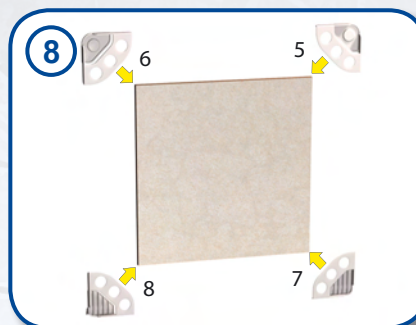
Example:  
 If wall opening = 458mm x 406mm  
 backing board = 433mm x 381mm

To cut the panel down to size, score and snap using a heavy duty craft knife.\*



4 Assemble the frame with corner parts 1, 2, 3 and 4 as shown by sliding the ‘T’ section of the corner clips into the ‘C’ section of the extrusion.

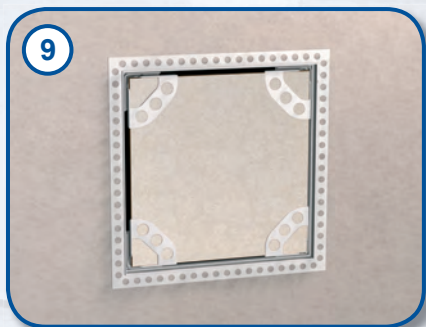
Once assembled, ensure the frame is square and of equal size to the your opening.



8 Attach the plastic corner parts 5, 6, 7 and 8 to the backing board as shown so that they sit firmly against the edges of the board.

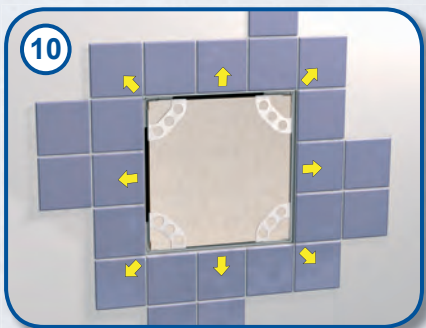


cont...



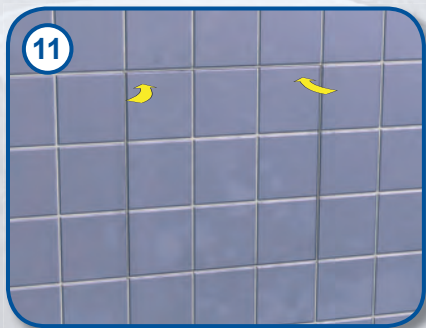
Insert the panel into the frame by engaging both hinges and then pushing the magnets together.

Test the size of the panel in relation to the frame by opening and closing it a few times to ensure both the frame and panel are the correct size.



Using standard tiling practices, tile the wall outside of the frame.

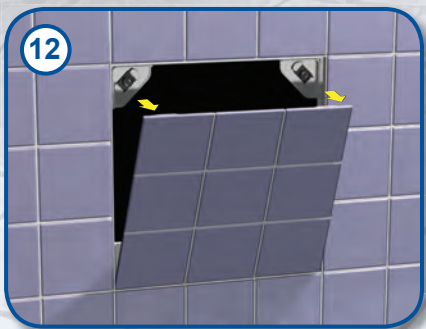
Always start from the frame and work outwards to the edge of the wall. Ensure the frame is securely bonded between the tiles and the wall using tile adhesive.



Tile the front of your panel leaving a thin gap between the outer tiles and the frame beading to allow the panel to open.

Once the tiles are in place, allow to dry for 24 hours then remove the panel. Grout both the panel and the surrounding wall.

Replace the panel once dry.



The Tile Access Panel is now ready to be used.

To access it, push on both top corners (see fig 11) and allow the panel to release while supporting the door.