

# Kytun™

DRY ROOFING PRODUCTS

The world's largest producer  
of Dry Verge Systems.



Valley



Hip



Ridge



Verge



Eaves



Abutment

## Who we are...

Kytun (UK) Ltd is a wholly owned subsidiary of North West Aluminium Ltd (NWA), set up in 2010 to service the ever increasing UK marketplace.

NWA is one of the largest manufacturers, wholesalers and distributors of Dry Roofing and Dry Fixing Products in Ireland & the UK. Established over 30 years ago, we pride ourselves on complete customer satisfaction, huge innovative product range and excellent customer service.

NWA specialise in the manufacture of Dry Verge Systems, which we have invented, designed, patented and introduced to the market all those years ago. Today, NWA are the largest producer of Dry Verge and Dry Roofing Systems, supplying our product range throughout Ireland and the UK under the Kytun™ brand.

Kytun's product range can be purchased exclusively through the leading Builders and Roofers Merchants across the country.

## What we do...

The Kytun range of Dry Roofing System's has evolved over 30 years to provide the most innovative solutions to Dry Fixing roof Verges, Ridges, Hips, Valleys and Abutments.

Developed in a region which experiences some of the harshest weather conditions in Europe the products have become the roofer's first choice when requiring total customer satisfaction.

## What is Dry Roofing or Dry Fixing?

Over the years systems have been developed to do away with the need for Mortar (Cement) on Roofs. This is referred to as Dry Roofing or Dry Fixing. The areas on a roof that are usually fixed with using mortar are the verges (gables), ridges, hips and valleys. The most common dry fix products are manufactured using either aluminum, PVC, steel, screws or clamps.

## Why avoid Mortar?

Mortar has been the traditional method for fixing roof systems such as verges, ridges and valleys for many years.

## Disadvantages of Mortar on a roof:

- Time consuming for roofer during installation
- Limited lifespan
- Requires regular maintenance
- Will crack and fall out
- Leaves roof exposed after it falls out
- Doesn't provide adequate protection against wind uplift.
- Susceptible to water ingress and penetration

## Why use a Dry Fix Method?

Regulations (BS5534) now state that all Verges, Ridges, Valleys and Hips must be fixed using at least one method of Mechanical or Dry Fixing. Dry Fixing has a huge number of advantages over traditional mortar:

## Advantages of using a Dry Fix System

- Quick and easy installation
- Huge labour saving costs
- Dramatically increases roof lifespan
- Leaves a maintenance free finish
- Stops water penetration
- Stops wind uplift
- Permanently secures slate/tiles & ridges on roof.
- Protects the most vulnerable parts of the roof.
- Allows natural movement of the roof.

**Kytun™**  
DRY ROOFING PRODUCTS

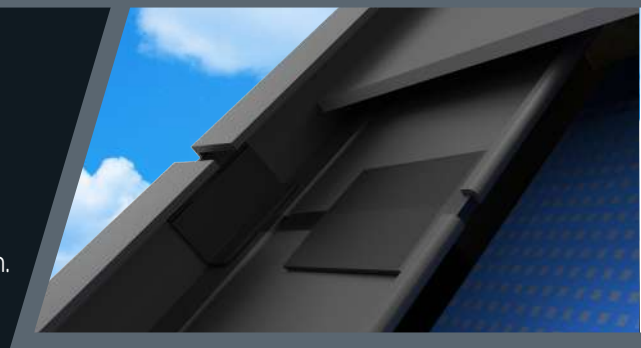
# CONTENTS

SLATE DRY VERGE C01 / C02	4
RETRO-FIT SLATE DRY VERGE	6
RETRO-FIT TILE DRY VERGE	8
UNIVERSAL DRY RIDGE KIT	10
CONTINUOUS SOAKERS	12
NOTES	14



## THE CONSTRUCTION PRODUCTS REGULATION

Declaration of Performance Documents are available for all relevant Kytun Products.  
Contact Kytun or visit [www.kytun.com](http://www.kytun.com) for further information.



## KYTUN PRODUCT QUALITY CONTROL

All our products are manufactured to an exceptionally high standard in accordance with the internationally recognised ISO 9001 Quality Management System.



## TECHNICAL SERVICE

Detailed technical advice is freely available from our highly trained and experienced technical department.

T. 01684 293702 E. [info@kytun.com](mailto:info@kytun.com)





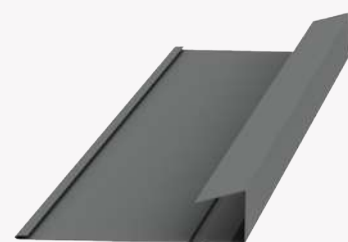
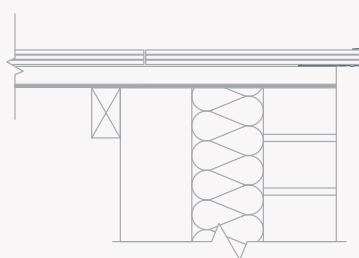
## C01 / C02 Slate Dry Verge

### PRODUCT DETAILS

- Provides full wind uplift and rain protection.
- Patented integral rainwater 'Drip System'.
- Extremely easy and quick to install.
- Huge labour saving costs.
- Meets BS 5534 requirements & NHBC guidelines.
- Requires no maintenance once installed.
- Creates continuous clean verge appearance.

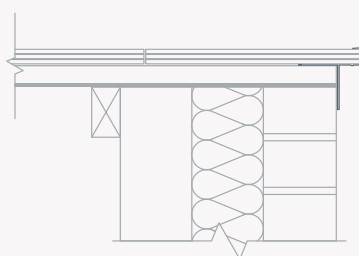
### SLATE DRY VERGE (T1) ALUMINIUM

Code	Size	Colour
C01	18mm x 3m/2.4m	Blk • Blue/Blk • Brown
C01N	25mm x 3m/2.4m	Blk • Blue/Blk • Brown



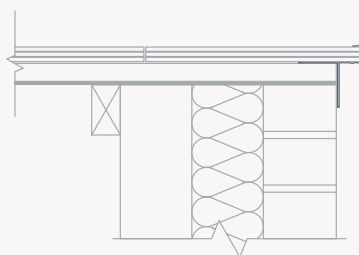
### SLATE DRY VERGE (T2) ALUMINIUM

Code	Size	Colour
C02	18mm x 3m/2.4m	Blk • Blue/Blk • Brown
C02N	25mm x 3m/2.4m	Blk • Blue/Blk • Brown



### SLATE DRY VERGE (T2) PVC

Code	Size	Colour
C02P	18mm x 3m/2.4m/2m	Blk
C02NP	25mm x 3m/2.4m/2m	Blk
*C02LP	32mm x 3m/2.4m/2m	Blk





# Dry Verge Systems Comparison Table

	<b>Kytun™</b> <small>DRY ROOFING PRODUCTS</small> Dry Verge System	Traditional Wet Mortar	Individual Dry Verge Caps	PVC/ GRP Continuous Dry Verge (under batten fixed)
Continuous clean verge appearance	✓	✗	✗	✗
Total batten end protection	✓	✗	✗	✗
Prevents wind uplift of slate/tiles	✓	✗	✗	✓
Prevents rainwater penetration	✓	✗	✗	✗
Self draining drip system	✓	✗	✗	✓
Maintenance free	✓	✗	✗	✓
Easy and quick to install	✓	✗	✓	✗
Provides an edge guide for roofer	✓	✗	✗	✗



C03  
Retro-Fit  
Slate Dry Verge

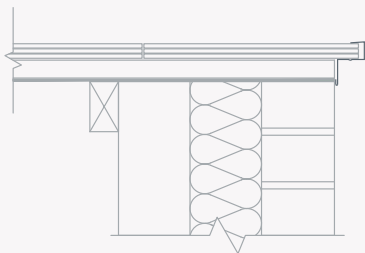


PRODUCT DETAILS

The Kytun Retro-Fit Slate Dry Verge System trim is ideal for roofs to which slates have already been fixed, to prevent slates from wind uplift. It is installed by placing the trim over the edge of the slates and face fixing into the barge boards.

SLATE DRY VERGE RETRO-FIT ALUMINIUM

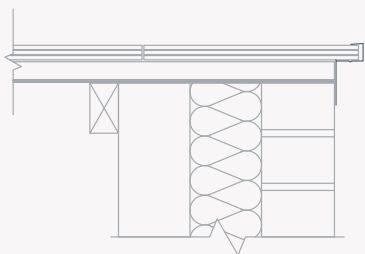
Code	Size	Colour
C03	18mm x 3m/2.4m	Blk • Blue/Blk • Brown
C03N	25mm x 3m/2.4m	Blk • Blue/Blk • Brown



SLATE DRY VERGE RETRO-FIT uPVC

Code	Size	Colour
C03P	25mm x 3m/2.4m	Blk • White

FULLY UNIVERSAL  
(works with both fibre cement & natural slates).





# Dry Verge Systems Comparison Table

	<div><b>Kytun™</b> <small>DRY ROOFING PRODUCTS</small> Dry Verge System</div>	Traditional Wet Mortar	Individual Dry Verge Caps	PVC/ GRP Continuous Dry Verge (under batten fixed)
Continuous clean verge appearance	✓	✗	✗	✗
Total batten end protection	✓	✗	✗	✗
Prevents wind uplift of slate/tiles	✓	✗	✗	✓
Prevents rainwater penetration	✓	✗	✗	✗
Self draining drip system	✓	✗	✗	✓
Maintenance free	✓	✗	✗	✓
Easy and quick to install	✓	✗	✓	✗
Provides an edge guide for roofer	✓	✗	✗	✗



## C08 / C08E Tile Dry Verge

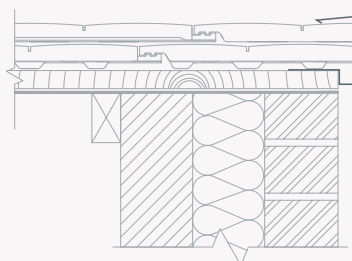


### PRODUCT DETAILS

- Provides full wind uplift and rain protection.
- Patented integral rainwater 'Drip System'.
- Extremely easy and quick to install.
- Huge labour saving costs.
- Meets BS 5534 requirements & NHBC guidelines.
- Requires no maintenance once installed.
- Creates continuous clean verge appearance.

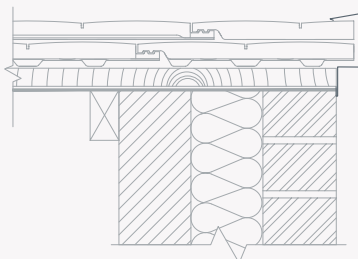
### TILE DRY VERGE ALUMINIUM

Code	Size	Colour
C08S	50mm x 3m	Blk • Blue/Blk • Brwn • Wht
C08	65mm x 3m	Blk • Blue/Blk • Brwn • Wht
C08JS	50mm x 3m (Jointer)	Blk • Blue/Blk • Brwn • Wht
C08J	65mm x 3m (Jointer)	Blk • Blue/Blk • Brwn • Wht



### RETRO-FIT TILE DRY VERGE ALUMINIUM

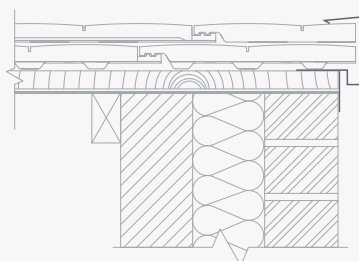
Code	Size	Colour
C08ES	50mm x 3m	Blk • Blue/Blk • Brwn • Wht
C08E	65mm x 3m	Blk • Blue/Blk • Brwn • Wht



### RETRO-FIT TILE DRY VERGE PVC

Code	Size	Colour
C08PS	45mm x 3m	Blk
C08P	60mm x 3m	Blk

Fully compatible with most tiles on the market.  
Suitable for brick, render & bargeboard construction.  
50mm Version: Suitable for a maximum individual tile thickness of 25mm.  
65mm Version: Suitable for a maximum individual tile thickness of 32mm.



### TILE DRY VERGE uPVC FITTINGS

For full details on our uPVC fittings and our complete dry verge system products visit our website: [www.kytun.com](http://www.kytun.com)



C08PFJIBL  
Standard Int. Jointer



C08PFEBL  
Standard End Cap



C08PFABL  
Apex Jointer



C08PJEBL  
External Jointer



C08PFBL  
Complete Pack

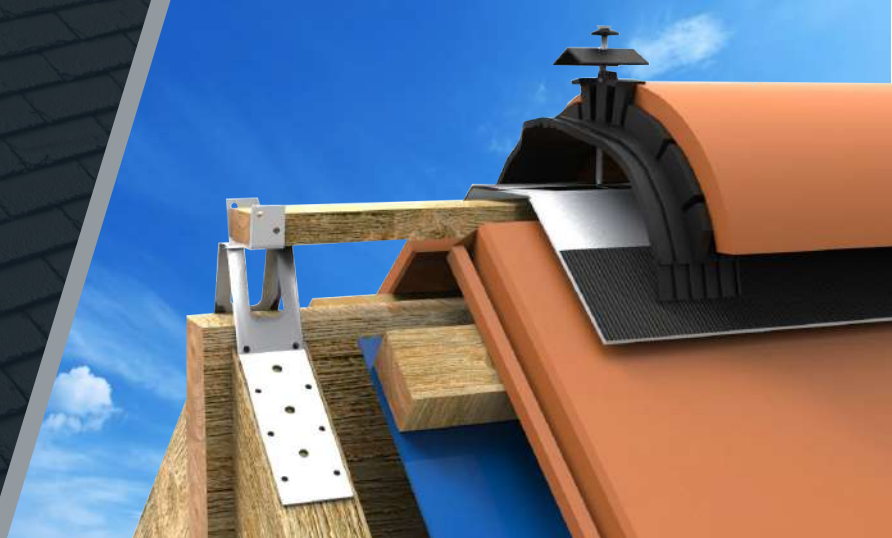


# Kytun Dry Verge

## Compatibility Table

	Tile Type	Product		Tile Type	Product
Crest	S9 Large Clay Flat Tile	C08S	Redland (Monier) Tile Product	Cambrian	C02N
	The Double Roman	C08S		Duo Plain	C08S
Forticrete	Gemini	C08S		Fontenelle	C08
	Hardrow	C08		Heathland	C08
	Mini slate	C08S		Landmark 10 Slate	C08S
	V2 reroofing tiles	C08		Mini Stonewold	C08
Imerys Tile Product	20 x 30 Clay plain Tile	C08		Plain	C08
	Beauvoise 20	C08S		Postel Clay Pantile	C08
	Double HP20 Clay Tile	C08		Redland 49	C08
	Double Panne S Clay Pantile	C08		Renown	C08
	HP17 Clay Tile	C08		Richmond	C08S
	Hughenot HP10 Clay Tile	C08		Rosemary Classic	C08S
	Panne H2 Clay Pantile	C08		Rosemary Craftsman	C08S
	Panne S Clay Rolled Tile	C08		Saxon	C08S
	Phalempin Clay Plain Tile	C08		Stonewold MkII	C08
Lagan	Elite Tile	C08S	Russel Tile	Argyll (Rolled)	C08
	Flat	C08		Cheviot	C08S
	Snowdon	C08S		Grampian	C08S
Marley Tile Product	Acme Single Camber	C08S		Highland	C08S
	Acme Double Camber	C08S	Quinn	Monopole (Rolled)	C08S
	Ashdowne	C08S		Devenish	C08S
	Ashmore	C08		Rathmore	C08S
	Canterbury Handmade	C08S	Wienerberger Tile Product	Western Slate	C08
	Clay Plain Tile	C08S		20/20	C08S
	Duo Edgemere	C08S		Alban (Plain)	C08S
	Duo Modern	C08		Barrow Plain	C08S
	Ecologic Ludlow	C08		Bridgwater (Rolled)	C08S
	Edgemere	C08S		Britslate (Countess & Duchess)	C02N
	Hawkins	C08S		Calderdale	C08
	Lincoln Clay Pantile	C08S		Dual Calderdale	C08
	Ludlow Major	C08		Cassius	C08S
	Ludlow Plus	C08		Flemish	C08
	Maxima Double Roman Clay	C08		Gaelic	C08
	Melodie Clay	C08		Goxhill	C08S
	Modern	C08		Humber Plain	C08S
	Plain Tile	C08S		Okewood (Plain)	C08S
	Riven Edgemere	C08S		Plain	C08S
				Village Plain	C08S
				Rivius	C08S
				Actua	C08

# UNIVERSAL Dry Ridge Kit



## PRODUCT DETAILS

- The Kytun Dry Ridge Kit is the first truly universal system suitable for ventilating and mechanically fixing ridge tiles.
- The unique ridge union bracket design allows for easy fixing to all concrete and clay ridge tiles.
- Complies with BS5534 for Mechanical Fixing of Ridge Tiles.

## UNIVERSAL DRY RIDGE COMPLETE KIT

Code	Size	Colour
DRUA01	5m	Anthracite
DRUC01	5m	Copper
DRUA02	6m	Anthracite



### RIDGE KIT - ANTHRACITE

5m

- 1 x VENTILATED ECO RIDGE ROLL 5m (ANTHRACITE)
- 11 x UNIVERSAL DRY RIDGE UNION BRACKET
- 11 x UNIVERSAL DRY RIDGE SCREWS & WASHERS
- 11 x UNIVERSAL DRY RIDGE CLAMPING PLATES
- 8 x UNIVERSAL DRY RIDGE BATTEN METAL PLATE

### RIDGE KIT - ANTHRACITE

6m

- 1 x VENTILATED RIDGE ROLL 6m (ANTHRACITE)
- 13 x UNIVERSAL DRY RIDGE UNION BRACKET
- 13 x UNIVERSAL DRY RIDGE SCREWS & WASHERS
- 13 x UNIVERSAL DRY RIDGE CLAMPING PLATES
- 10 x UNIVERSAL DRY RIDGE BATTEN METAL PLATE

### RIDGE KIT - COPPER

5m

- 1 x VENTILATED RIDGE ROLL 5m (COPPER)
- 11 x UNIVERSAL DRY RIDGE UNION BRACKET
- 11 x UNIVERSAL DRY RIDGE SCREWS & WASHERS
- 11 x UNIVERSAL DRY RIDGE CLAMPING PLATES
- 8 x UNIVERSAL DRY RIDGE BATTEN METAL PLATE

## UNIVERSAL DRY RIDGE KIT PRODUCTS

Code	Description
DRUB01	Union Bracket
DRSC02	Union Brackets & Screws Kit
DRSC01	Screws & Clamping Plates
DRSC03	Batten Metal Plate
DRHTPVC	Ridge Hip Tray



DRSC01  
Screws & Clamping  
Plates



DRUB01  
Union Bracket



DRSC03  
Batten Metal plate



DRSC02  
Union Brackets &  
Screws Kit

PACK QTY.  
X 11



DRHTPVC  
Ridge Hip Tray

## VENTILATED RIDGE ROLLS

Code	Description	
RREC01	ECO Roll	5m
RREC02	ECO Roll	6m
RRCOP	COPPER - Roll	5m



RREC01 / RREC02  
Standard Int. Joiner

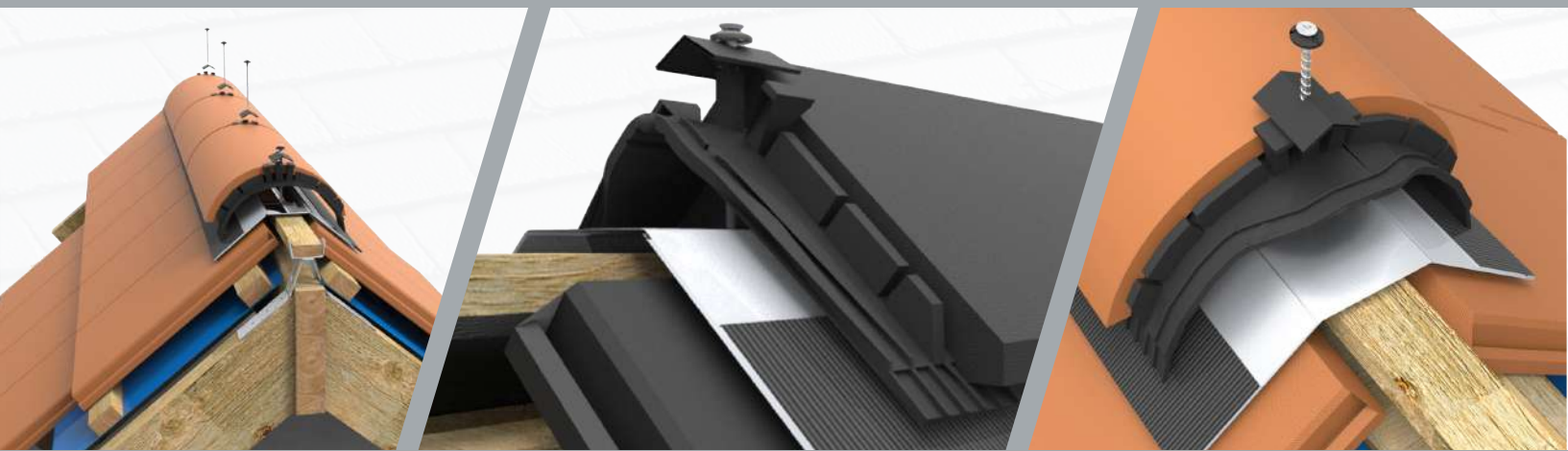


RRCOP  
Standard Int. Joiner



# Kytun Dry Ridge Bracket

MAIN ADVANTAGES OF USING OUR PRODUCT AGAINST OUR CLOSEST COMPETITORS



## Material & Physical Properties

LDPE - Product is rubberised making it more flexible, less brittle and has higher flexural strength.



## Fixing

Due to its innovative design the KYTUN Bracket fits tight to the Ridge Capping (Half round or angled) when screw is fixed.



## Ventilation

Water channels on KYTUN Bracket allow Ventilation at the roof ridge.



## Angle Capacity

Flexible nature of KYTUN bracket gives a tight fix to Ridge tile including, steep plain angle ridges.



## Capping Piece

Aluminium capping piece 2mm thick.

**100%**  
Guaranteed  
Not to crack  
or break.



## Water run off – Drainage

Drainage channels and edge to product to ensure water does not enter roof space. Water directed onto roof covering.



## Pre-installation

KYTUN Ridge Bracket can be pre-installed to Ridge Tiles due to its innovative design to allow for faster installation of your ridge.



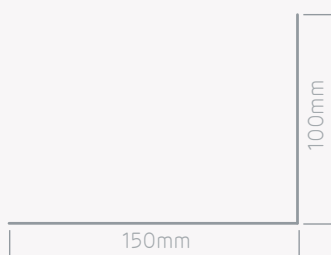
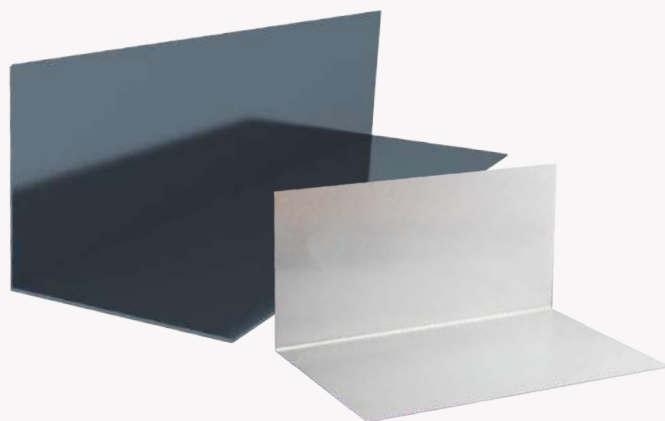
## C06 / C14 Soakers & Continuous Soakers

### PRODUCT DETAILS

Aluminium soakers are for use when forming a pitched roof against an existing wall. Prefabricated to a 90 degree angle, soakers are inserted between successive courses to make a waterproof joint. A lightweight and durable alternative to lead.

### ALUMINIUM SOAKERS

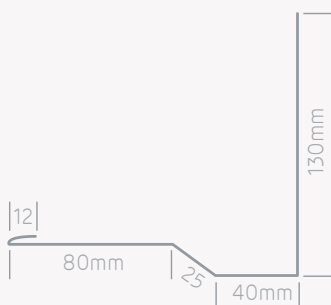
Code	Size	Colour
C06S	150mm x 100mm x 330mm	Blk • Blue/Blk • Brown
C06	150mm x 150mm x 330mm	Blk • Blue/Blk • Brown



### CONTINUOUS ALUMINIUM SOAKERS

Code	Size	Colour
C14	(as below)	Blk • Blue/Blk

Suits all slate and flat tile applications.





# Aluminium Soakers & Continuous Soakers

## ALUMINIUM SOAKERS

Suits all slate and flat tile applications.

Code	Description	Size	Col./Finish	Pack of
C06SBL	Aluminium Soaker	150mm x 100mm x 330mm	Black	50
C06SBB	Aluminium Soaker	150mm x 100mm x 330mm	Blue/Black	50
C06BL	Aluminium Soaker	150mm x 150mm x 330mm	Black	50
C06BB	Aluminium Soaker	150mm x 150mm x 330mm	Blue/Black	50
C06BR	Aluminium Soaker	150mm x 150mm x 330mm	Brown	50
C06A	Aluminium Soaker	75mm x 75mm x 150mm	Milled Finish	25
C06B	Aluminium Soaker	100mm x 50mm x 150mm	Milled Finish	25
C06C	Aluminium Soaker	100mm x 75mm x 150mm	Milled Finish	25
C06D	Aluminium Soaker	75mm x 75mm x 175mm	Milled Finish	25
C06E	Aluminium Soaker	100mm x 50mm x 175mm	Milled Finish	25
C06F	Aluminium Soaker	100mm x 75mm x 175mm	Milled Finish	25
C06G	Aluminium Soaker	75mm x 75mm x 300mm	Milled Finish	25
C06H	Aluminium Soaker	100mm x 50mm x 300mm	Milled Finish	25
C06I	Aluminium Soaker	100mm x 75mm x 300mm	Milled Finish	25
C06J	Aluminium Soaker	75mm x 75mm x 337.5mm	Milled Finish	25
C06K	Aluminium Soaker	100mm x 50mm x 337.5mm	Milled Finish	25
C06L	Aluminium Soaker	100mm x 75mm x 337.5mm	Milled Finish	25

## CONTINUOUS ALUMINIUM SOAKERS

Code	Colour	Pack Qty
C14BL	Black	10
C14BB	Blue/Black	10

Suits all slate and flat tile applications.



# Notes

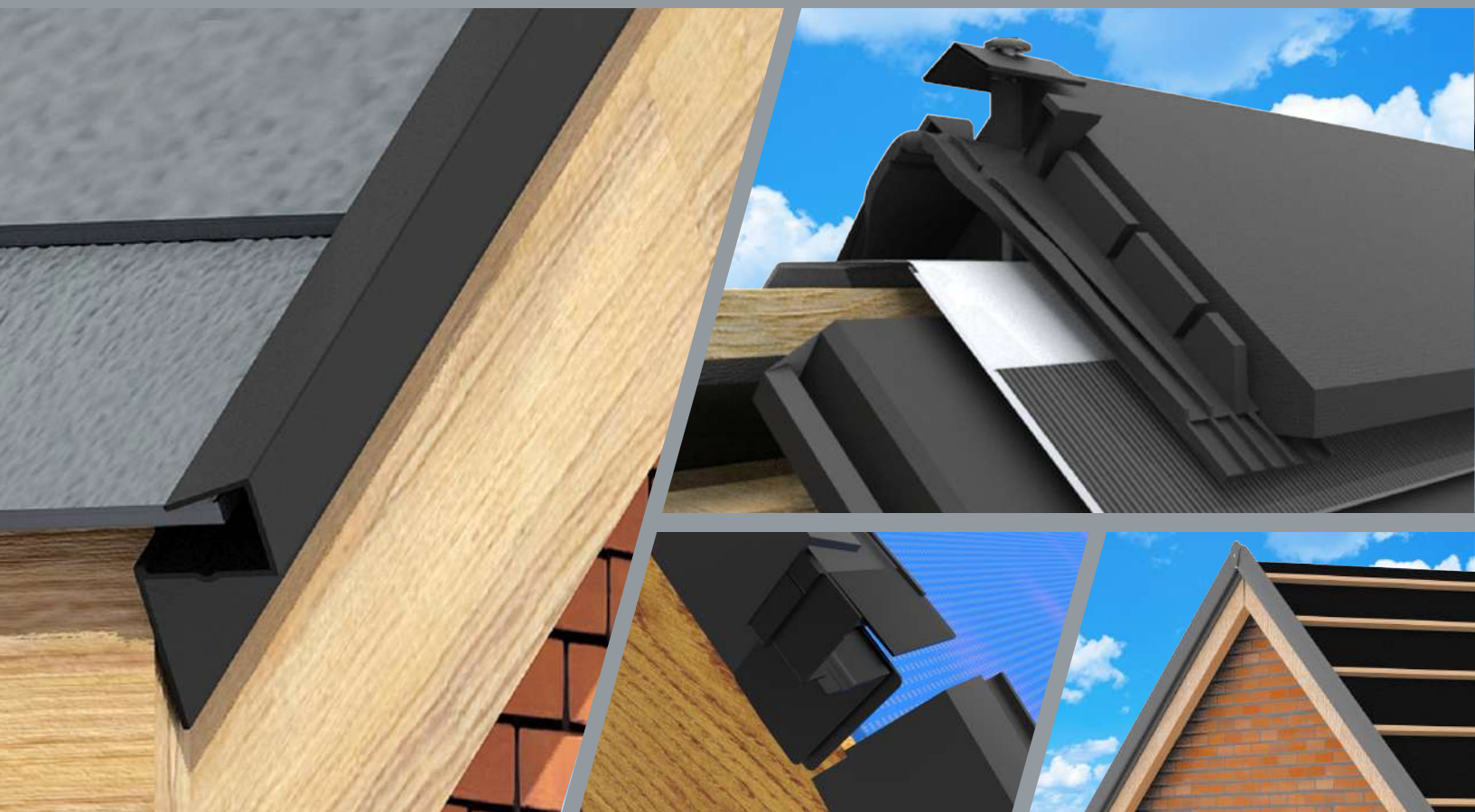
This image shows a single sheet of white paper with horizontal ruling lines. The lines are evenly spaced and run across the width of the page. There are no margins, text, or other markings on the paper.





# Kytun™

DRY ROOFING PRODUCTS



Irl. Office: Keenaghan, Kilmacrenan, Letterkenny, Co. Donegal, Ireland. T. +353 (0)74 91 39500 F. +353 (0)74 91 39519 E. [info@nwa.ie](mailto:info@nwa.ie) W. [www.nwa-group.com](http://www.nwa-group.com)  
UK Office: Brook House, Stock Lane, Halifax, West Yorkshire, HX2 7RU T. +44 (0) 1684 293702 E. [info@kytun.com](mailto:info@kytun.com) W. [www.kytun.com](http://www.kytun.com) f t in y

 **nwa** GROUP  
NORTH WEST ALUMINIUM

 **nwa**  
BUILDING PRODUCTS

**GutterClad®**  
RAINWATER & CLADDING

**Kytun™**  
DRY ROOFING PRODUCTS