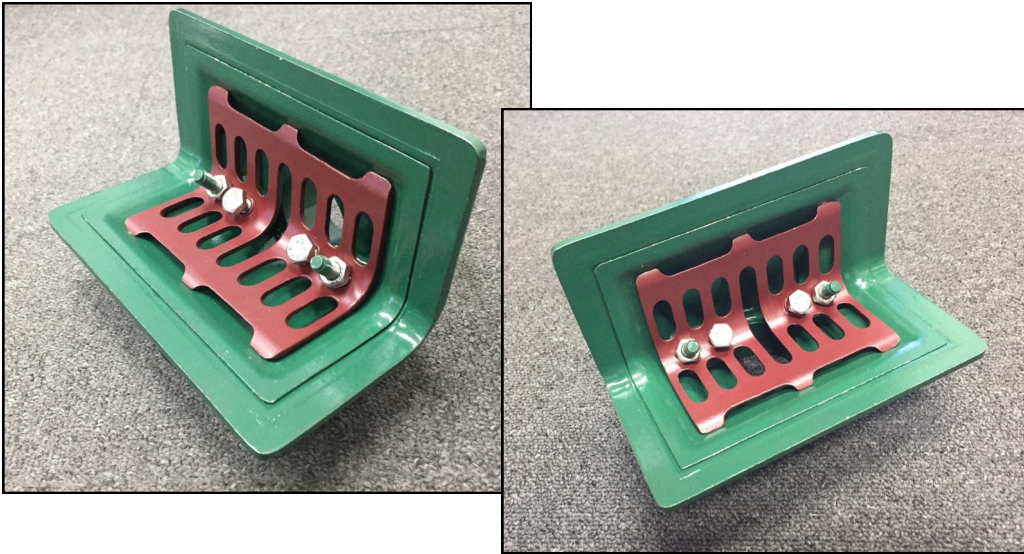
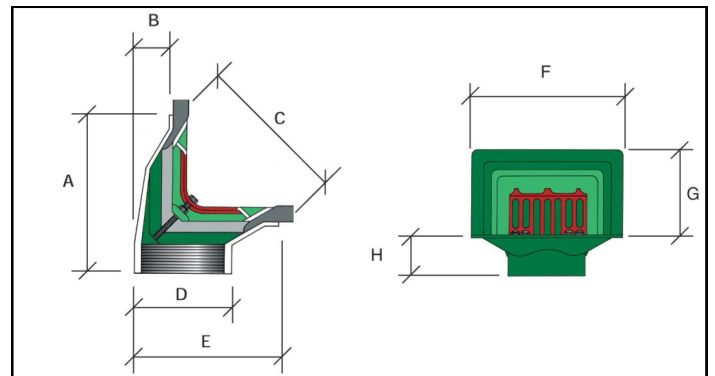


50mm Mini Two Way Outlet (Code: 50/TW/M)



Caroflow Mini Two-Way Threaded Roof Outlet is designed for use at the intersection of horizontal and vertical surfaces, i.e. a balcony and parapet wall, and can be used to drain off vertically or horizontally. Available in either LM6 Aluminium Silicon casting alloy to BS EN 1706:2010 for most roof finishes or in leaded gunmetal to BS EN 1982:2008 for use with lead or copper-clad roofs or for connection to copper pipe work. They are female parallel threaded to BS21:1985.



Performance and Connections

Suitable for connection to:

- Screw threaded steel
- PVC (with Caroflow Threaded Adaptors)
- Aluminium (with Caroflow Threaded Adaptors)
- Cast Iron (with Caroflow Threaded Adaptors)
- Copper (Gunmetal only)

Dimensions (mm)

A = 143	D = 75	G = 90
B = 32.5	E = 122	H = 48
C = 125	F = 190	

Drainage Rates

Type	Code	Att.	Area (m ²)	Rate (ltrs/sec)
Two Way Outlet	50/TW/M	Hor.	48	1.15
Two Way Outlet	50/TW/M	Vert.	73	1.73



ISO 9001:2008
GB00227

Example Specification

50mm Nominal Bore Caroflow Two Way Threaded Aluminium (or Leaded Gunmetal) rainwater outlet Code 50/TW/M, as manufactured by Caroflow Limited +44 (0) 1763 244446